

PROFILES

FOR REFRIGERATION FURNITURE
PROFILE DO MEBLI CHŁODNICZYCH

WYBRANA OFERTA
SELECTED OFFER

2

AiFO

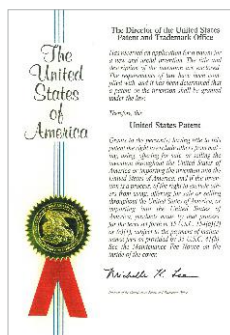
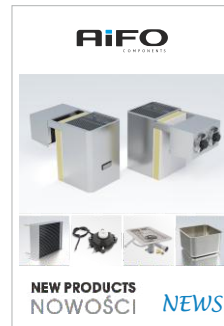
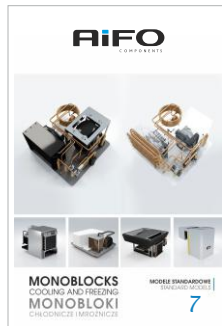
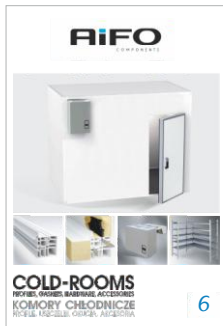
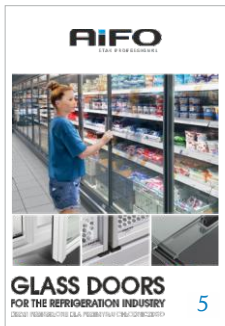
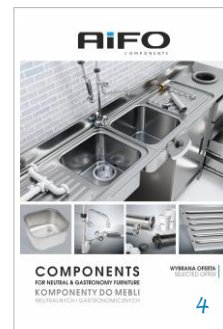
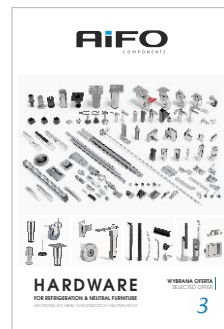
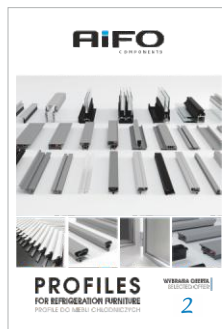
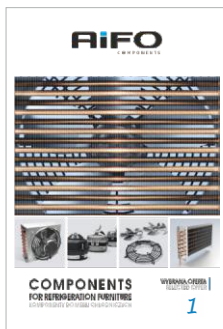
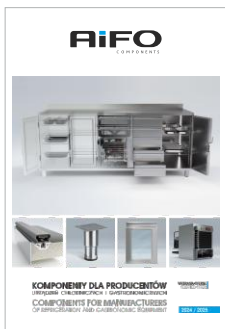
COMPONENTS



Zajmujemy się produkcją i dystrybucją komponentów do m.in. mebli gastronomicznych ze stali nierdzewnej, urządzeń chłodniczych, grzewczych oraz stoisk kawowych. Wykonujemy projekty indywidualne podzespołów oraz produkujemy drzwi przesłone dla przemysłu chłodniczego. Pragniemy stać się dla Państwa partnerem, aby służyć rzetelną pomocą w sposób elastyczny oraz kompleksowy.

Our main activity is production and distribution of components for catering, refrigeration and heating equipment and also coffee stations. We do individual projects of components and we manufacturer glass doors for the refrigeration industry. We want to become your business partner, offering you reliable, flexible and comprehensive help.

GENERAL FOLDER

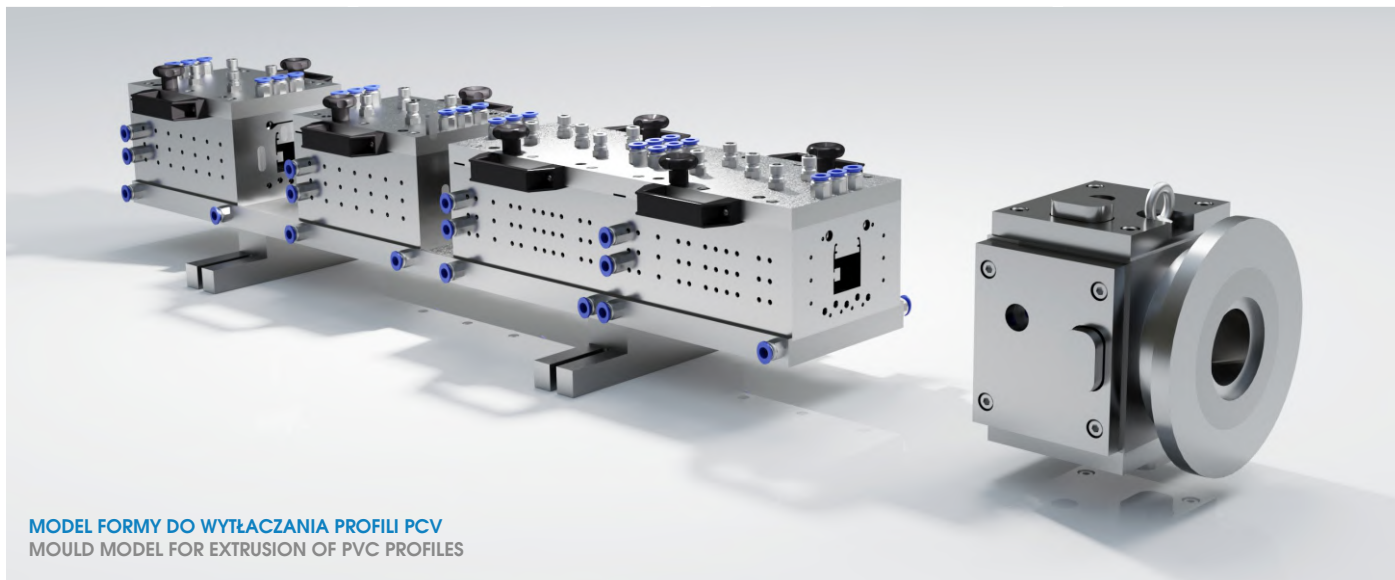


Certyfikaty ISO & patenty

ISO certificates & patents

UWAGA! AiFO Components zastrzega sobie prawo do wprowadzenia zmian i ulepszeń w następstwie ewolucji technicznej i handlowej produktów przedstawionych w niniejszym katalogu bez uprzedzenia. Zastrzegamy sobie prawo do zmiany specyfikacji produktów znajdujących się w tej publikacji, czy też wycofania produktów z oferty. Prosimy skontaktować się z biurem obsługi klienta, aby uzyskać aktualne informacje i szczegóły techniczne dotyczące przedstawionych produktów. Niniejszy katalog zawiera jedynie część oferty produktowej AiFO Components. Niniejszy katalog jako całość, ani też informacje dotyczące którejkolwiek z produktów nie stanowią oferty w rozumieniu przepisów art 66 i nast. Kodeksu cywilnego.

CAUTION! AiFO Components company reserves the right to make any change and improvement following the technical and commercial evolution of the products shown in this catalogue without prior notice. The illustrations and the descriptions are given just as an indication. We reserve the right to update, change the products specification in this publication and the rights to withdraw selected products from the offer. Please consult our office for up to date information and technical modernizations of the products in real time. This catalogue includes only a part of products which offer AiFO Components company. This catalogue as a whole or any products information is not an offer within the meaning of Article 66 et seq. CC.

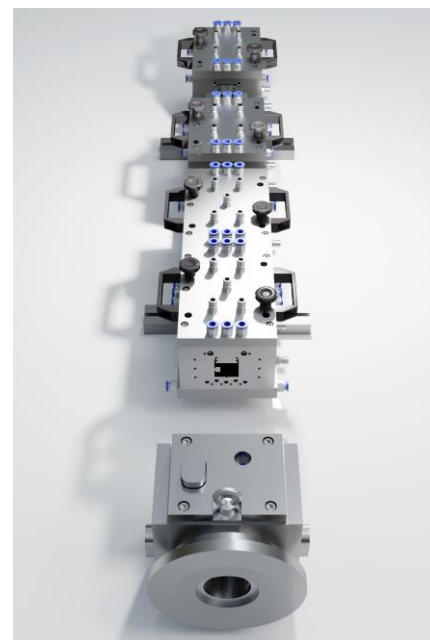


MODEL FORMY DO WYTŁĄCZANIA PROFILI PCV
MOULD MODEL FOR EXTRUSION OF PVC PROFILES

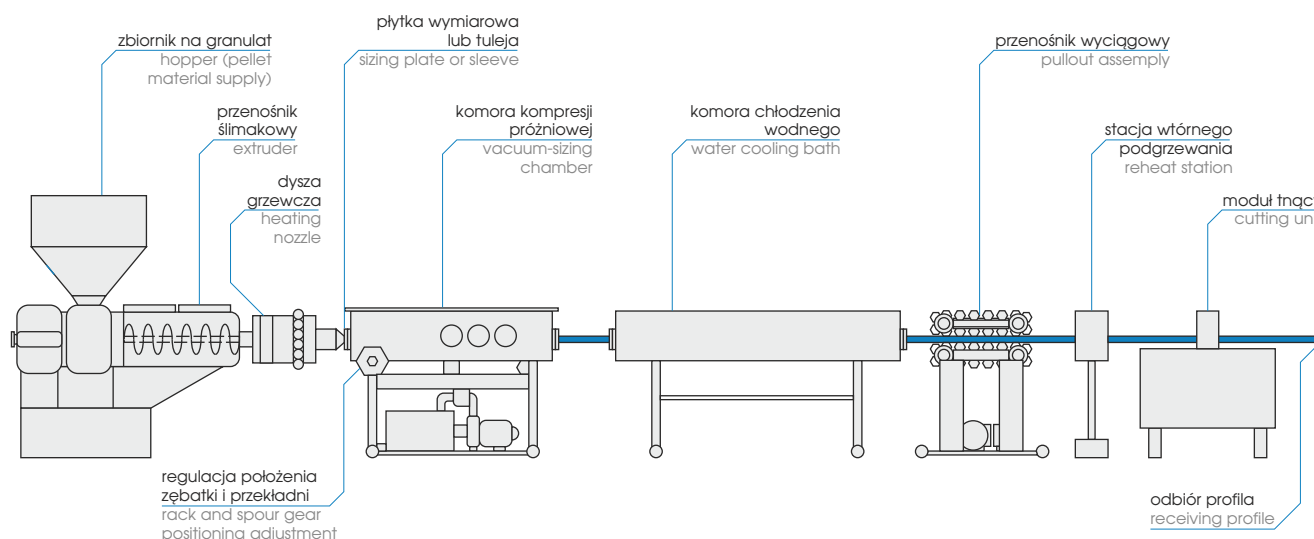
Proces ekstruzji profili PCV / PVC profile extrusion process

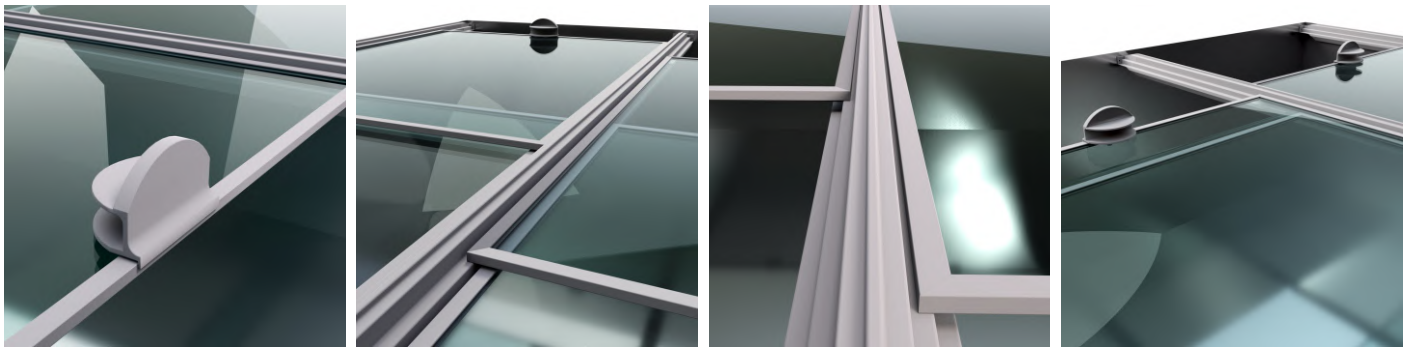
- **Podgrzewanie tworzywa** – Uplastycznienie granulatu poprzez jego podgrzanie za pomocą dyszy grzewczej w celu stworzenia jednolitej mieszaniny i możliwości nadania kształtu.
- **Wytłaczanie** – Uplastycznione tworzywo tłoczmy w sposób ciągły przez płytkę wymiarową i komorę kompresji próżniowej.
- **Chłodzenie** – Komora chłodzenia wodnego odpowiada za utwardzenie i zachowanie kształtu całego produktu.
- **Powtórne podgrzewanie** – Dzięki wtórnemu podgrzewaniu wygładzamy powierzchnię profili i likwidujemy małe defekty.
- **Gotowy wyrób** – Produkt gotowy możemy pociąć na wymiar oraz wykonać nadruk z serią produkcyjną.

- **Heating the plastic** – Plasticizing the granules by heating them with a heating nozzle to create a uniform mixture and the ability to shape.
- **Extrusion** – The plasticized material is extruded continuously through a sizing plate and vacuum compression chamber.
- **Cooling** – The water cooling chamber is responsible for curing and maintaining the shape of the entire product.
- **Reheating** – By reheating we smooth the surface of the profile and eliminate small defects.
- **Finished product** – The finished product can be cut to size and printed with a production run.



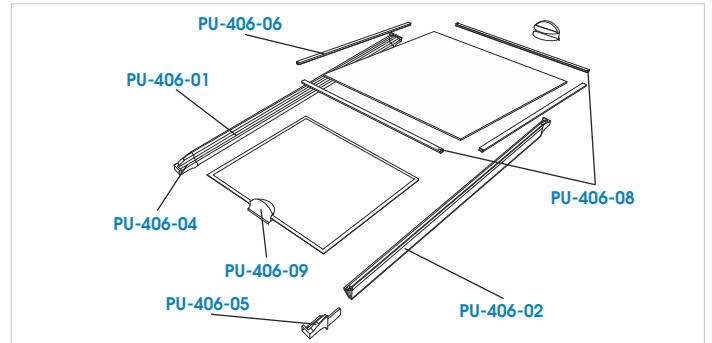
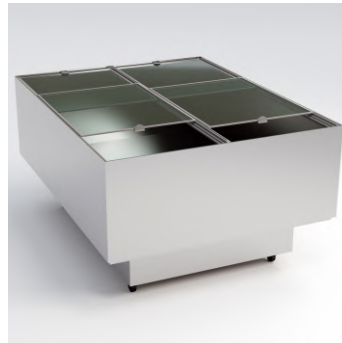
LINIA TECHNOLOGICZNA WYTŁĄCZANIA PROFILI PCV
TECHNOLOGICAL LINE OF PVC PROFILE EXTRUSION





PU-406
PROFILE DO BUDOWY
POKRYW SZKLANYCH
PROFILES FOR
GLASS COVERS

■ twarde PCV (szary)
rigid PVC (grey)

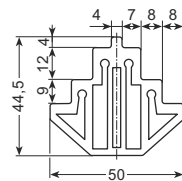


PU-406-01
PROFIL WEWNĘTRZNY RAMY
INTERNAL FRAME PROFILE

PU-406-02
PROFIL ZEWNĘTRZNY RAMY
EXTERNAL FRAME PROFILE

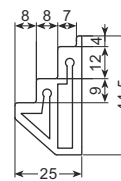
■ twarde PCV (szary)
rigid PVC (grey)

PU-406-01

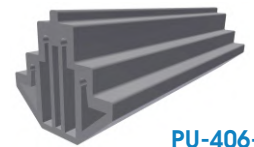


DŁUGOŚĆ/LENGTH 3,8 m

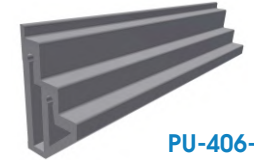
PU-406-02



DŁUGOŚĆ/LENGTH 3,8 m



PU-406-01



PU-406-02

PU-406-06 / 08
PROFIL SZYBY BOCZNY
LATERAL GLASS PROFILE

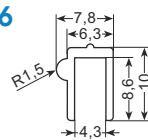
PU-406-04 / 05
ZAŚLEPKA (LEWA/PRAWA)
END CAP (LEFT/RIGHT)

PU-406-09
UCHWYT
HANDLE

■ twarde PCV (szary)
rigid PVC (grey)

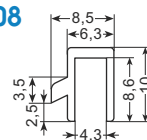
PU-406-06

DŁUGOŚĆ
LENGTH
3,8 m



PU-406-08

DŁUGOŚĆ
LENGTH
3,8 m

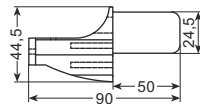


PU-406-06

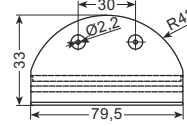
PU-406-08

PU-406-04
LEWA/LEFT

PU-406-05
PRAWA/RIGHT

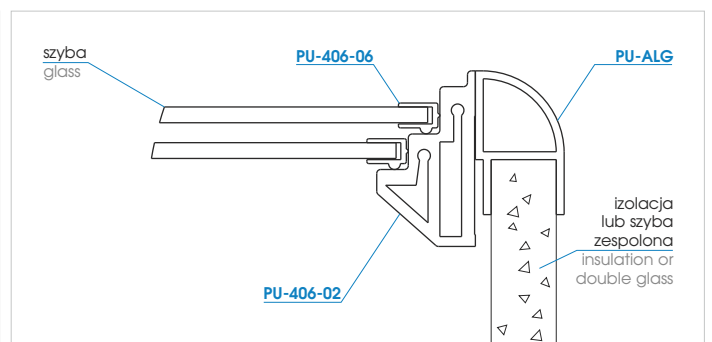
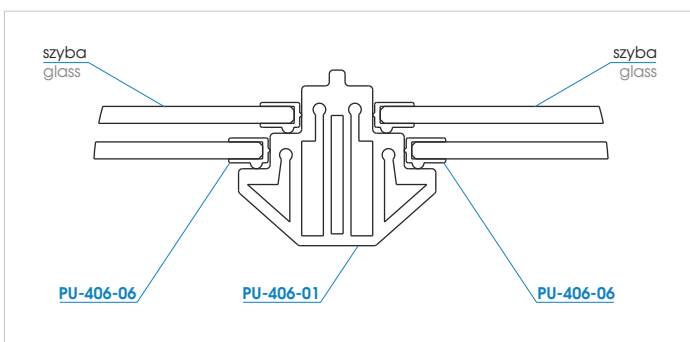


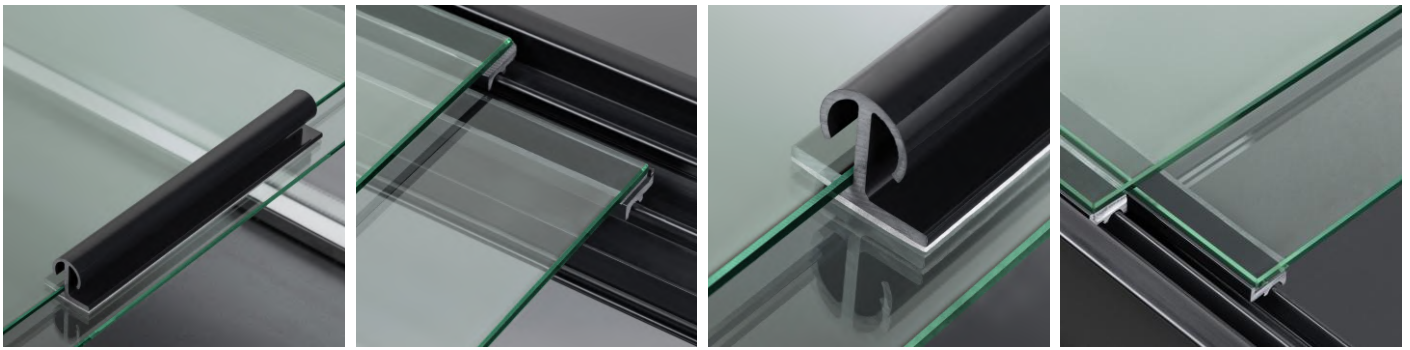
PU-406-09



PU-406-04

PU-406-09

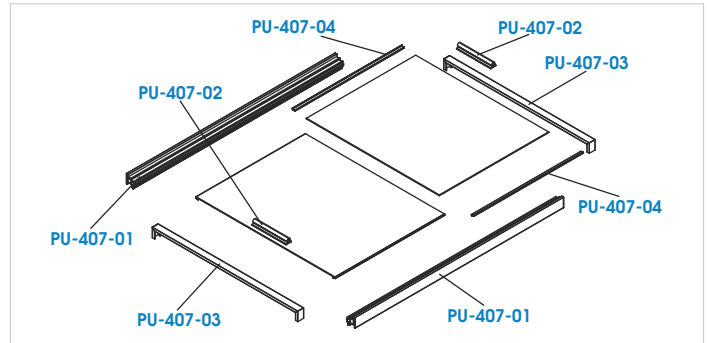




PU-407
PROFILE DO BUDOWY
POKRYW SZKLANYCH
(ZALETY: TRANSPARENTNOŚĆ
KONSTRUKCJI)
PROFILES FOR
GLASS COVERS
(ADVANTAGES:
TRANSPARENCY
OF THE SYSTEM)



■ twarde PCV (czarny)
rigid PVC (black)

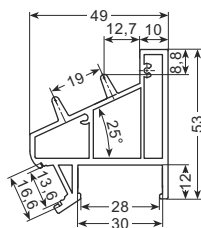


PU-407-01
PROFIL RAMY
FRAME PROFILE

PU-407-02
PROFIL UCHWYTU
HANDLE PROFILE

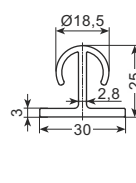
■ twarde PCV (czarny)
rigid PVC (black)

PU-407-01

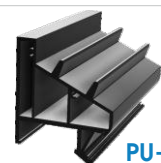


DŁUGOŚĆ/LENGTH 4 m

PU-407-02



DŁUGOŚĆ/LENGTH 4 m

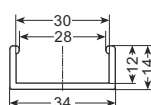


PU-407-03
PROFIL MASKUJĄCY
COVER PROFILE

PU-407-04
PROFIL SZYBY BOCZNY
LATERAL GLASS PROFILE

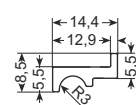
■ twarde PCV (czarny)
rigid PVC (black)

PU-407-03

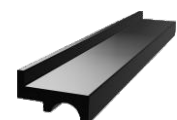


DŁUGOŚĆ/LENGTH 4 m

PU-407-04





DŁUGOŚĆ/LENGTH 4 m

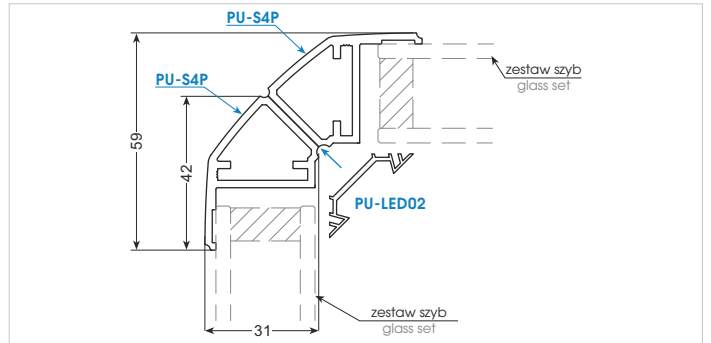
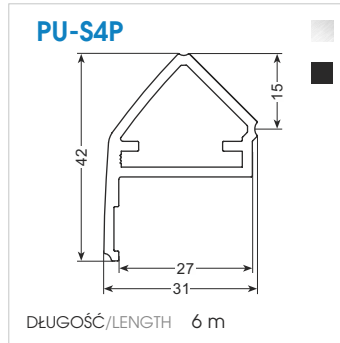


PATENTED SYSTEM



PU-S4P
PROFIL DO KONSTRUKCJI
PRZESZKLONYCH
PROFILE FOR
GLASS DISPLAY CASES

-  anodowane aluminium (srebrny lub czarny)
-  anodized aluminium (silver or black)



Unikatowy system profili do budowy konstrukcji cztero-, pięcio-, sześć-stronnie przeszklonych
A unique system of profiles for the construction of four-, five-, six-sided glass display cases

Zastosowanie tego rozwiązania eliminuje konieczność stosowania narożników, dając jednocześnie wysoką sztywność bryły we wszystkich trzech osiach
This solution eliminates corners, but provides a high strength of the structure in all three axes

Łatwy i szybki montaż
Easy and fast assembly

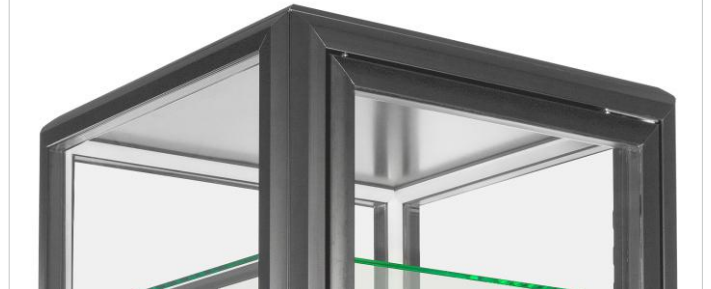


SYSTEM ZNAJDUJE ZASTOSOWANIE W BUDOWIE PRZESZKLONYCH:

- URZĄDZEŃ CHŁODNICZYCH I MROŹNICZYCH
- GABLOT WYSTAWIENNICZYCH
- KORPUŚÓW CENTRAL WENTYLACYJNYCH

- SYSTEM IS USED FOR GLASS CONSTRUCTIONS:
- REFRIGERATING AND FREEZING COUNTERS, DISPLAY CASES
 - EXHIBITION SHOWCASES
 - CORPS OF VENTILATION CENTRALS

ALUMINIUM ANODOWANE NA CZARNO
BLACK ANODIZED ALUMINIUM



PRZYKŁAD ZASTOSOWANIA W GONDOLI
EXAMPLE OF APPLICATION IN A SHOWCASE ISLAND

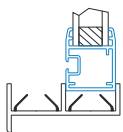


ALUMINIUM ANODOWANE NA SREBRNO
SILVER ANODIZED ALUMINIUM

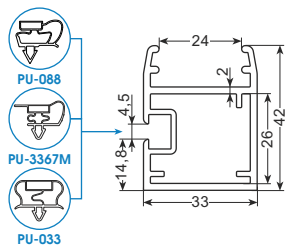


PROFILE DO DRZWI PRZESUWNYCH I UCHYLNÝCH (SZAFY CHŁODNICZE) PROFILES FOR SLIDING AND HINGED DOORS (COOLING CABINETS)

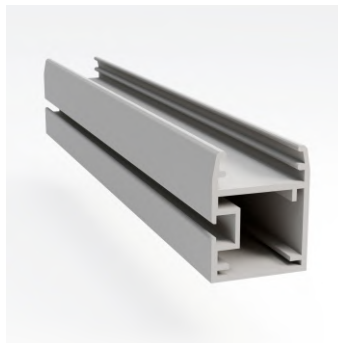
- twarde PCV (czarny lub biały)
- rigid PVC (black or white)



PU-DR

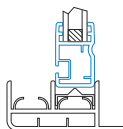


DŁUGOŚĆ/LENGTH 3,2 m

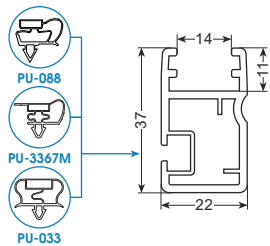


PROFILE DO DRZWI PRZESUWNYCH I UCHYLNÝCH (WITRYNY CHŁODNICZE) PROFILES FOR SLIDING AND HINGED DOORS (COOLING DISPLAY CASES)

- twarde PCV (czarny)
- rigid PVC (black)



PU-DRM

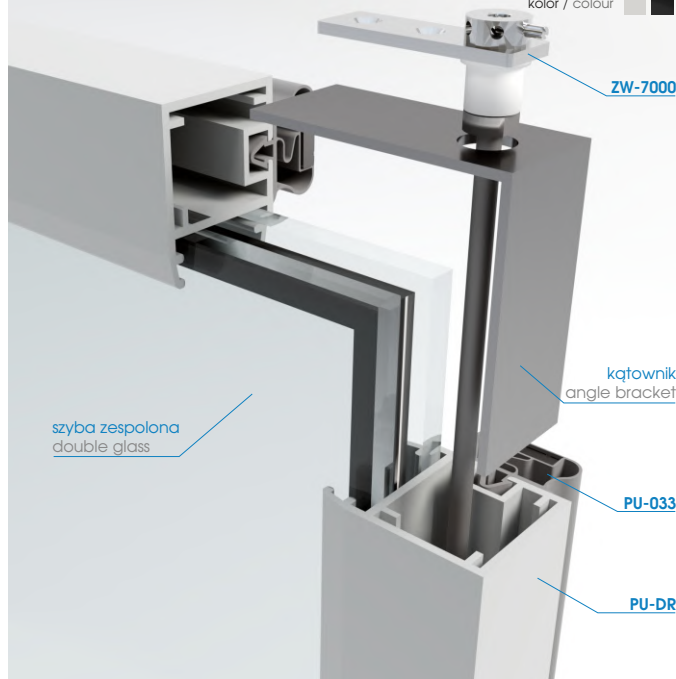


DŁUGOŚĆ/LENGTH 3 m



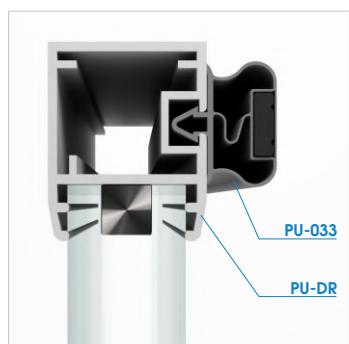
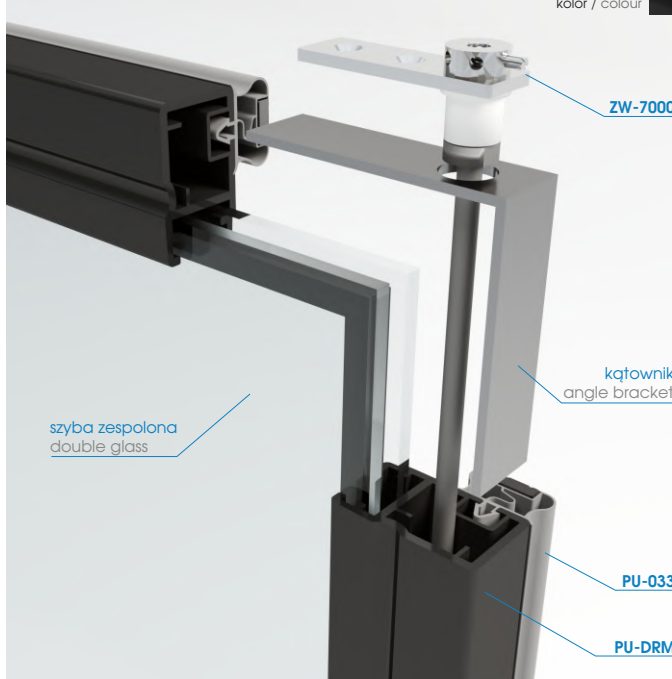
PRZEKRÓJ POPRZECZNY DRZWI UCHYLNÝCH DF-PP33 CROSS-SECTION DF-PP33 HINGED DOORS

kolor / colour



PRZEKRÓJ POPRZECZNY DRZWI UCHYLNÝCH DF-PP22 CROSS-SECTION DF-PP22 HINGED DOORS

kolor / colour



DF-PP33



PU-DR PROFILE

DF-PP22



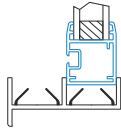
PU-DRM PROFILE



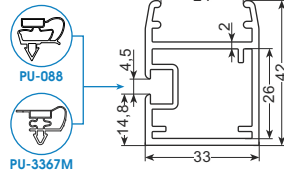
ZASTOSOWANIE W SZAFIE CHŁODNICZEJ APPLICATION IN COOLING CABINET

PROFILE DO DRZWI PRZESUWNYCH I UCHYLNÝCH (SZAFY CHŁODNICZE) PROFILES FOR SLIDING AND HINGED DOORS (COOLING CABINETS)

■ twarde PCV (czarny lub biały)
■ rigid PVC (black or white)

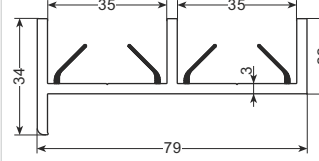


PU-DR



DŁUGOŚĆ/LENGTH 3,2 m

PU-PDP

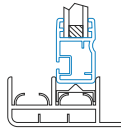


DŁUGOŚĆ/LENGTH 3,2 m

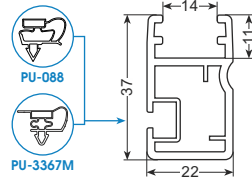


PROFILE DO DRZWI PRZESUWNYCH I UCHYLNÝCH (WITRYNY CHŁODNICZE) PROFILES FOR SLIDING AND HINGED DOORS (COOLING DISPLAY CASES)

■ twarde PCV (czarny)
■ rigid PVC (black)

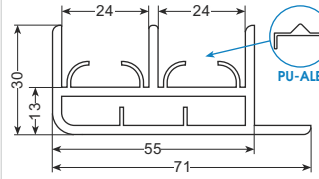


PU-DRM



DŁUGOŚĆ/LENGTH 3 m

PU-PDM

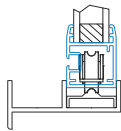


DŁUGOŚĆ/LENGTH 4 m

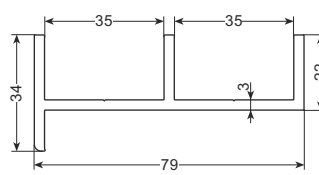


PROFILE DO DRZWI PRZESUWNYCH (SZAFY CHŁODNICZE) PROFILES FOR SLIDING DOORS (COOLING CABINETS)

■ twarde PCV (czarny)
■ rigid PVC (black)



PU-PDPa

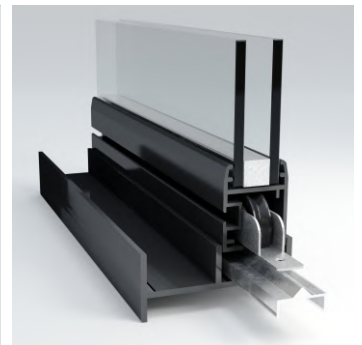


DŁUGOŚĆ/LENGTH 3,2 m

KP-AC-3528 KP-AC-3428

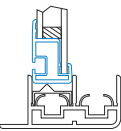


WIĘCEJ INFORMACJI W DZIAŁE ROLEK
MORE INFORMATION IN ROLLERS SECTION

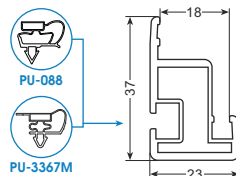


PROFILE DO DRZWI PRZESUWNYCH WITRYN CHŁODNICZYCH (MAŁYCH I DUŻYCH) PROFILES FOR SLIDING COOLING DISPLAY CASES (SMALL AND LARGE)

■ twarde PCV (czarny)
■ rigid PVC (black)

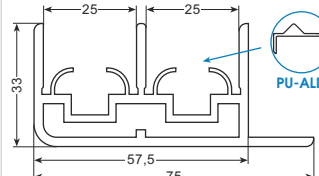


PU-DRI

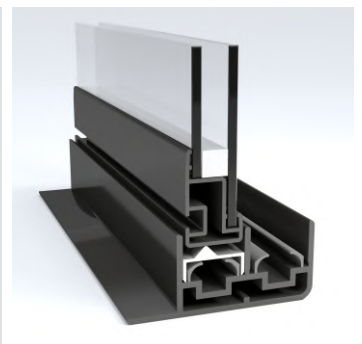


DŁUGOŚĆ/LENGTH 3,65 m

PU-PDI



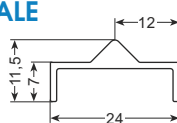
DŁUGOŚĆ/LENGTH 2,93 m



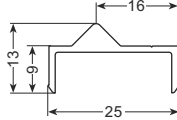
PROFIL PROFILE

■ aluminium
■ aluminium

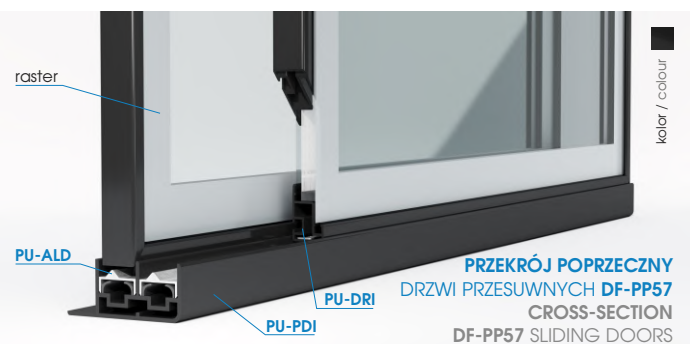
PU-ALE



PU-ALD



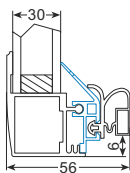
DŁUGOŚĆ/LENGTH 5 m



PRZEKRÓJ POPRZECZNY DRZWI PRZESUWNYCH DF-PP57 CROSS-SECTION DF-PP57 SLIDING DOORS

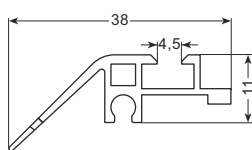
DRZWI WYKONYWANE WEDŁUG SPECYFIKACJI KLIENTA / DOORS MADE ACCORDING TO CUSTOMER SPECIFICATION

**PROFIL
PROFILE**



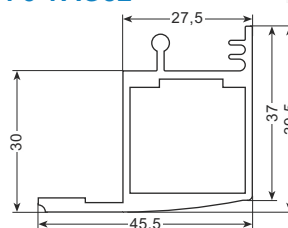
- twarde PCV (czarny)
rigid PVC (black)
- aluminium
aluminium

PU-PAC01



DŁUGOŚĆ/LENGTH 3 m

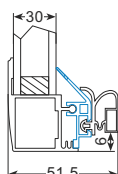
PU-PAC02



DŁUGOŚĆ/LENGTH 3 m

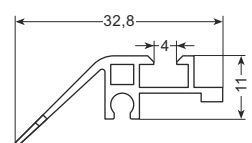


**PROFIL
PROFILE**



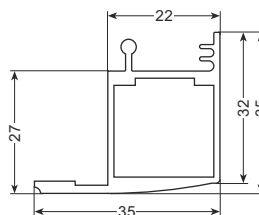
- twarde PCV (czarny)
rigid PVC (black)
- aluminium
aluminium

PU-PAC03



DŁUGOŚĆ/LENGTH 3 m

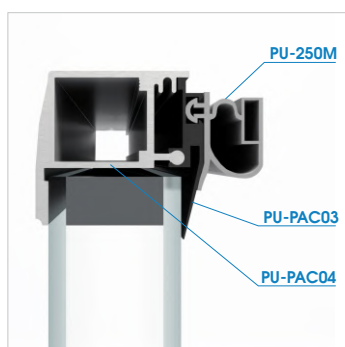
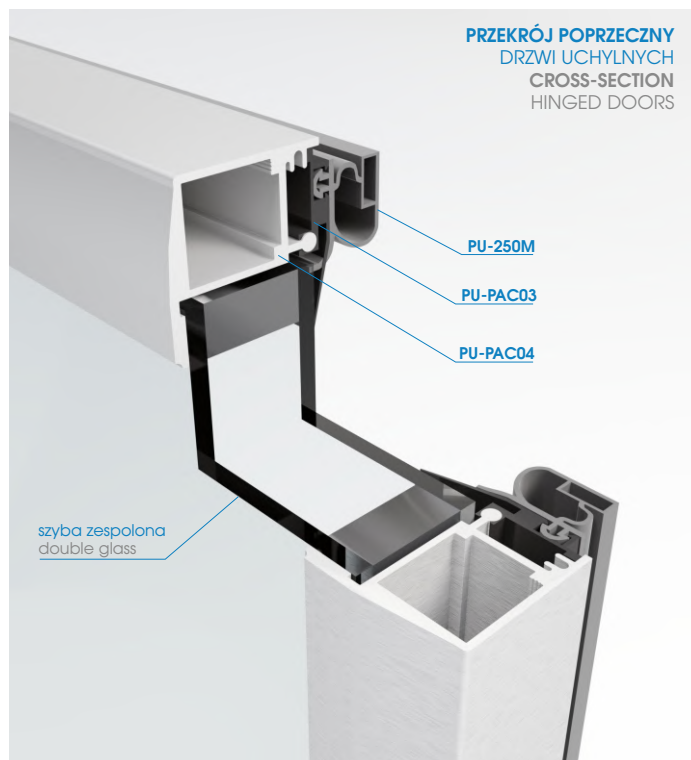
PU-PAC04



DŁUGOŚĆ/LENGTH 3 m



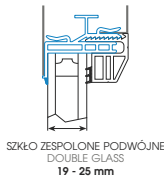
**ZASTOSOWANIE
W PRZESZKLONYCH
DRZWIACH UCHYLNÝCH DF-CC
DO SZAF CHŁODNICZYCH
APPLICATION IN DF-CC
HINGED GLASS DOORS
FOR REFRIGERATED CABINETS**



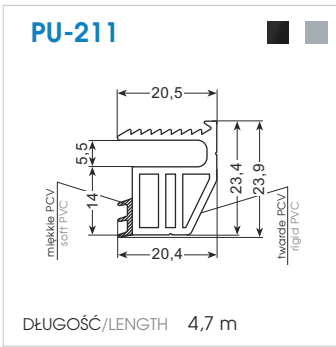
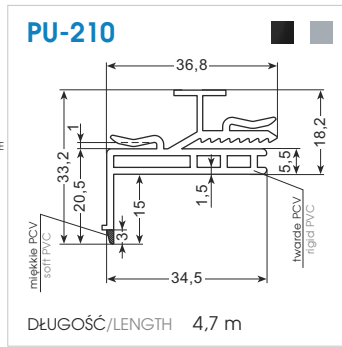
ZASTOSOWANIE W DRZWIACH UCHYLNÝCH
APPLICATION IN HINGED GLASS DOORS

PROFILE DO SZKŁA ZESPOLONEGO PODWÓJNEGO 19-25 MM \ PROFILE FOR DOUBLE GLASS 19-25 MM

PROFIL
PROFILE

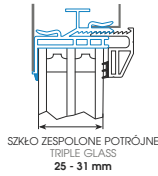


- twarde i miękkie PCV (szary, czarny)
- rigid and soft PVC (grey, black)

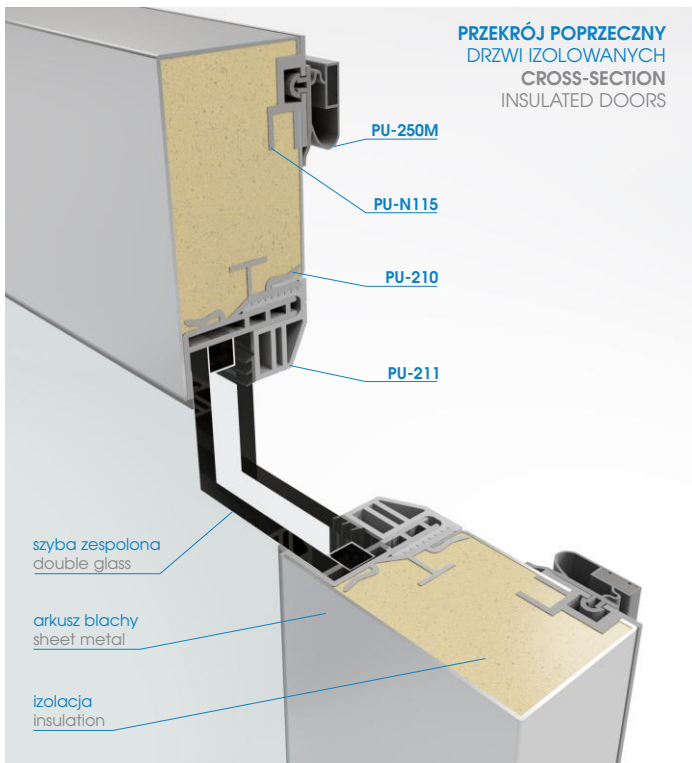
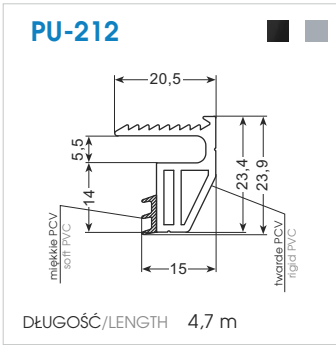
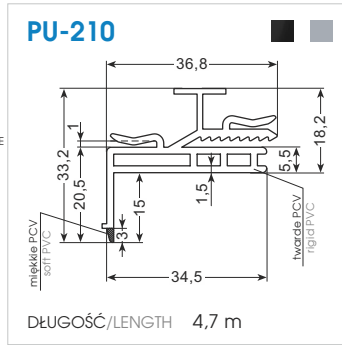


PROFILE DO SZKŁA ZESPOLONEGO POTRÓJNEGO 25-31 MM \ PROFILE FOR TRIPLE GLASS 25-31 MM



PROFIL
PROFILE



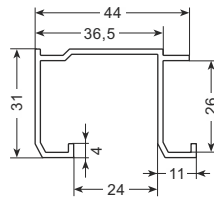
- twarde i miękkie PCV (szary, czarny)
- rigid and soft PVC (grey, black)



PROFIL DRZWI PRZESUWNYCH I OGRANICZNIK
SLIDING DOORS PROFILE AND LIMITER

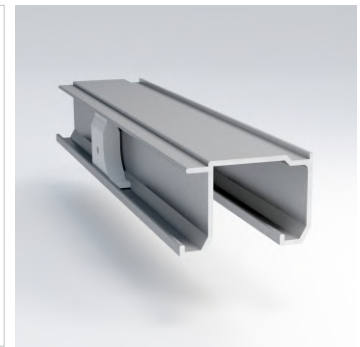
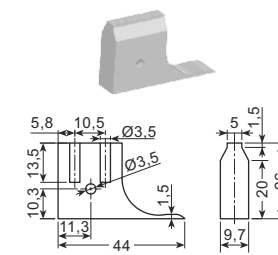
-  anodowane aluminium
anodized aluminium
-  biały poliamid
white polyamide

PR-C-1041/2041/3041

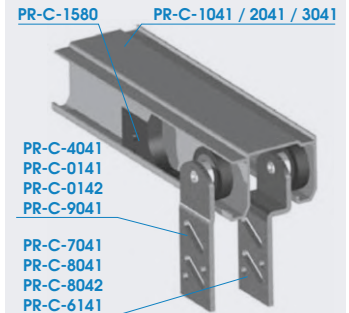
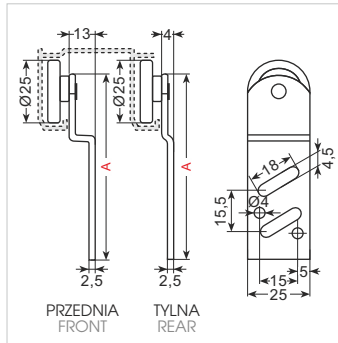


DŁUGOŚĆ/LENGTH 1/2/3 m

PR-C-1580



RÓŻNE TYPY ROLEK
DIFFERENT TYPES OF TROLLEYS



ROLKA
TROLLEY

-  stal nierdzewna (AISI-304)
stainless steel (AISI-304)
-  nylon (biały)
nylon (white)
-  nylon (czarny)
nylon (black)
-  ocynk
zinc-coated steel

PR-C-8042 PR-C-0142



ŁOŻYSKO KULKOWE/BALLS BEARING
WYMIAR (A)/DIMENSION 68 mm

PR-C-7041 PR-C-4041



ŁOŻYSKO BEZKULKOWE
NON-BALLS BEARING
WYMIAR (A)/DIMENSION 68 mm



ROLKA
TROLLEY

-  stal nierdzewna (AISI-304)
stainless steel (AISI-304)
-  nylon (biały)
nylon (white)
-  nylon (czarny)
nylon (black)
-  ocynk
zinc-coated steel

PR-C-8041 PR-C-0141



ŁOŻYSKO KULKOWE/BALLS BEARING
WYMIAR (A)/DIMENSION 63 mm

PR-C-6141 PR-C-9041



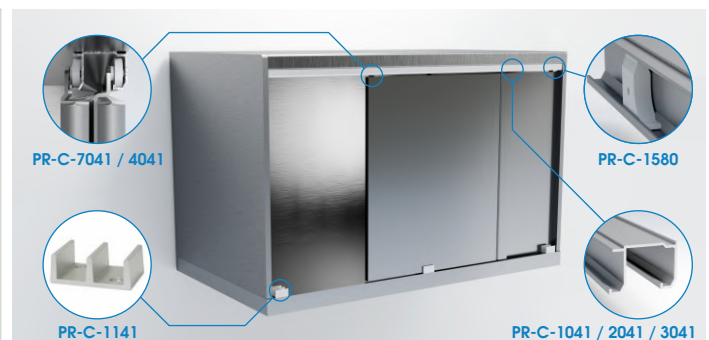
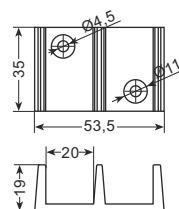
ŁOŻYSKO KULKOWE/BALLS BEARING
WYMIAR (A)/DIMENSION 68 mm



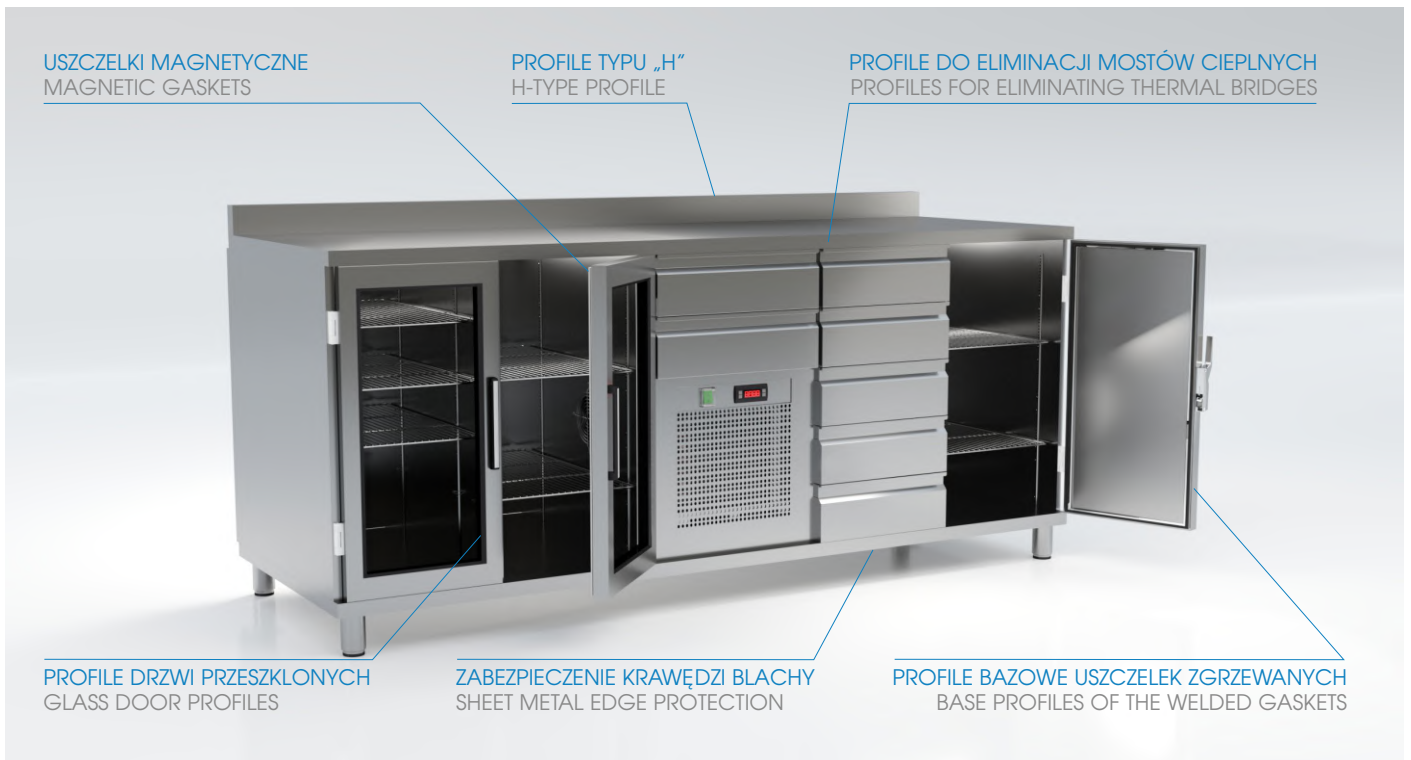
SZYNA DOLNA
BOTTOM RAIL

-  anodowane aluminium
anodized aluminium

PR-C-1141



ZASTOSOWANIE W SZAFCE WISZĄCEJ INOX / APPLICATION IN INOX WALL MOUNTED CABINET



Profile do eliminacji mostków cieplnych są używane we wszystkich urządzeniach chłodniczych oraz mroźniczych. Zapobiegają kondensacji w korpusie mebla, oddzielają środowiska o różnych temperaturach i różnych poziomach wilgotności, co w konsekwencji zapobiega powstawaniu skroplin i lodu na ścianach komory.

Dzięki kadrcze wykwalifikowanych specjalistów mamy możliwość zaprojektować i zrealizować nietypowe modele profili według indywidualnych potrzeb technicznych.

Ekstruzja profili jest elementem linii produkcyjnej drzwi przeszkłonych do urządzeń chłodniczych i mroźniczych. Realizujemy projekty zarówno do regałowych nowych jak i istniejących.

Profiles for thermal bridge elimination are used in all refrigeration and freezing furnitures. They prevent the phenomenon of condensation in the refrigeration furniture, separate environments with different temperatures and humidity levels, which prevents the formation of condensation and ice on the walls of the chamber.

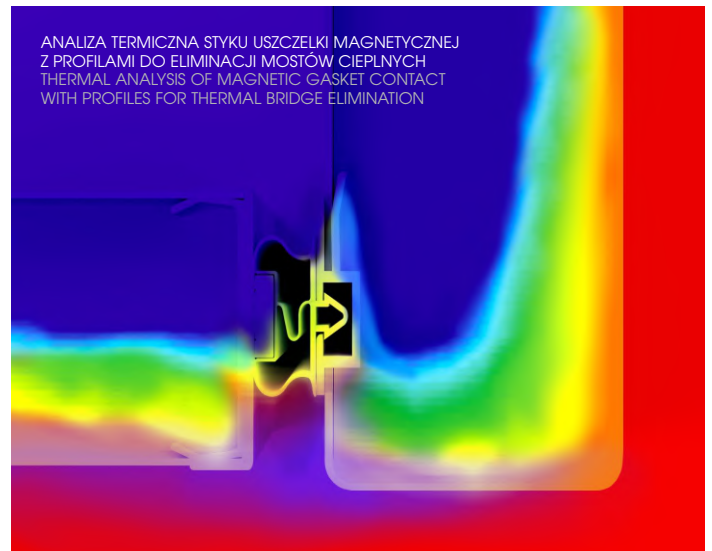
Thanks to a staff of qualified specialists we are able to design and realize unusual profile models according to individual technical needs.

Extrusion of profiles is part of the production line for glass doors to refrigeration and freezing furnitures. We realize projects both for new racks as well as existing ones.

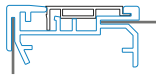
Klasyfikacja materiałów na podstawie ciepła, ciśnienia, trwałości, kosztów i innych cech.

Classify materials based on heat, pressure, durability, cost and other characteristics.

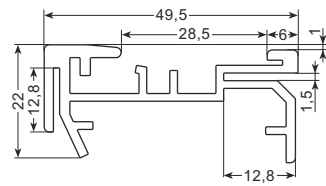
- PVC (Polichlorek winylu / Polyvinyl Chloride)
- PVC (Sztwały / Rigid)
- PCW (Elastyczny / Flexible)
- PVC-ABS (niestandardowe / Custom Compounds)
- ABS (Akronitril-Butadien-Stiren)
- PC (Poliwęglan / Polycarbonate)
- PC-ABS (Mieszanki specjalne / Custom Compounds)
- PMMA (Akryl / Acrylic)
- PE (Polietylen / Polyethylene)
- HDPE (Polietylen wysokiej gęstości / High Density Polyethylene)
- LDPE (Polietylen niskiej gęstości / Low Density Polyethylene)
- PP (Polipropylen / Polypropylene)
- PS (Polistyren / Polystyrene)
- TPE (Elastomer termoplastyczny / Thermoplastic Elastomer)
- Magnes / Magnet
- Inne niestandardowe mieszanki / Other Custom Compounds



PROFIL
(zastosowanie:
szafy chłodnicze
i mroźnicze)
PROFILE
(application in:
cooling and
freezing cabinets)

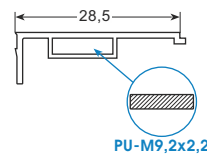


PU-K

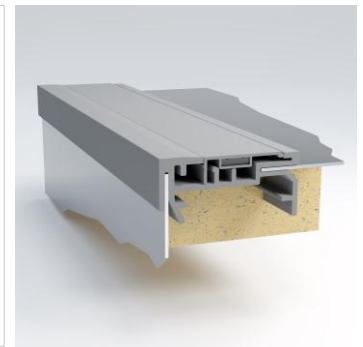


DŁUGOŚĆ/LENGTH 2,4 m

PU-K cover



DŁUGOŚĆ/LENGTH 2,4 m

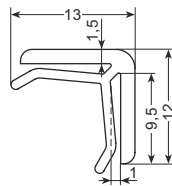


■ twarde PCV (szary)
rigid PVC (grey)

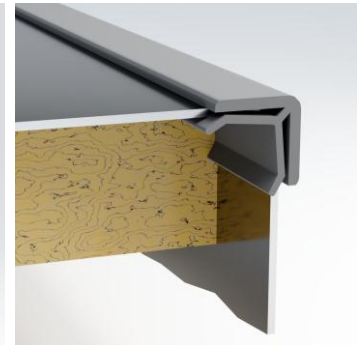
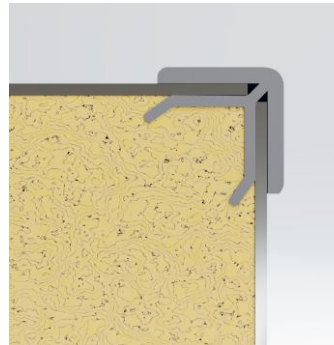
PROFIL
(zastosowanie:
zabezpieczenie
krawędzi
arkusza blachy)
PROFILE
(application in:
sheet edge protection)



PU-NK



DŁUGOŚĆ/LENGTH 2 / 4 m

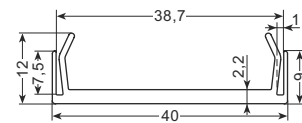


■ twarde PCV (szary)
rigid PVC (grey)

PROFIL
PROFILE



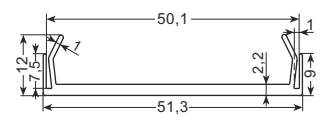
PU-440



DŁUGOŚĆ/LENGTH 3,5 m

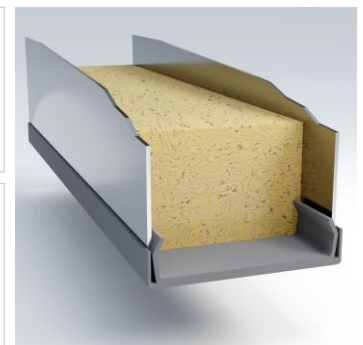
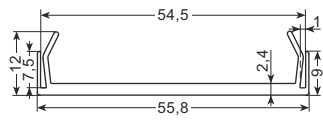
PU-U51

Dł./LEN 1,7 m



PU-U56

Dł./LEN 1,8 m

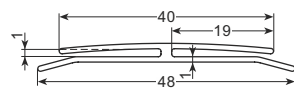


■ twarde PCV (szary)
rigid PVC (grey)

PROFIL
PROFILE

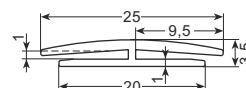


PU-HD

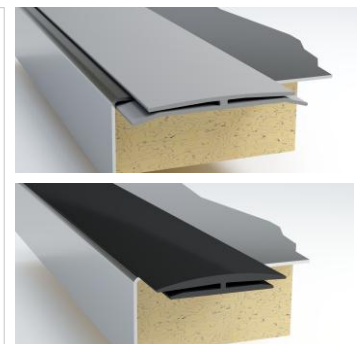


DŁUGOŚĆ/LENGTH 4,8 m

PU-HM

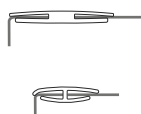


DŁUGOŚĆ/LENGTH 2 / 3 m

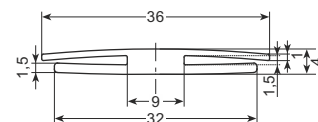


■ twarde PCV (szary)
rigid PVC (grey)
■ twarde PCV (czarny)
rigid PVC (black)

PROFIL
PROFILE

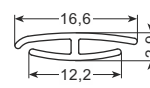


PU-HA

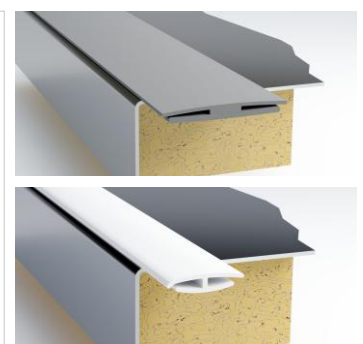


DŁUGOŚĆ/LENGTH 3 m

PU-HP



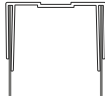
DŁUGOŚĆ/LENGTH 6 m



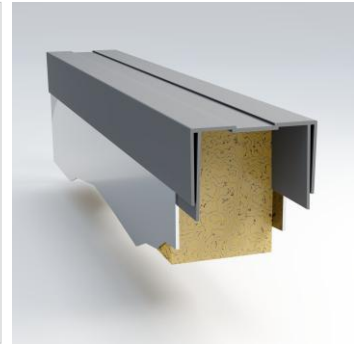
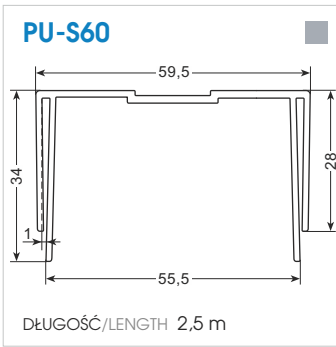
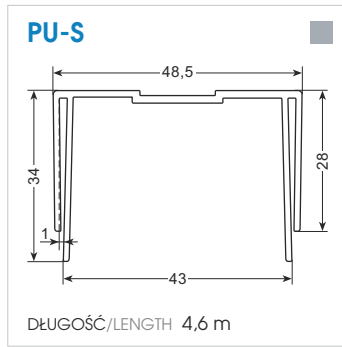
■ twarde PCV (szary)
rigid PVC (grey)
□ twarde PCV (biały)
rigid PVC (white)

INNE DŁUGOŚCI I KOLORY NA ZAMÓWIENIE / OTHER LENGTHS AND COLORS ON REQUEST

PROFIL PROFILE



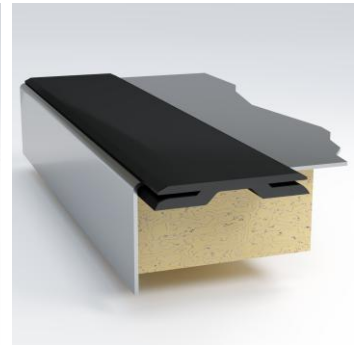
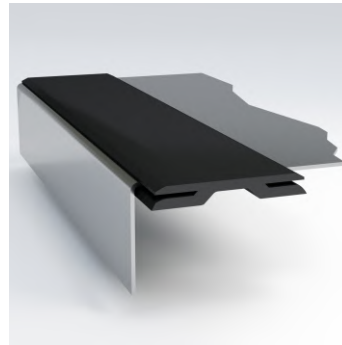
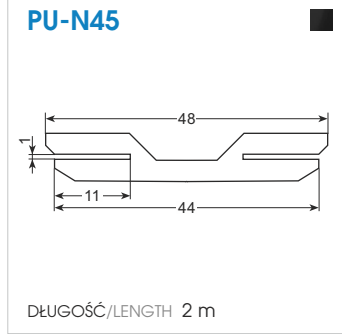
■ twarde PCV (szary)
rigid PVC (grey)



PROFIL PROFILE



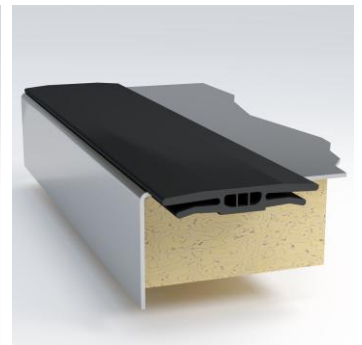
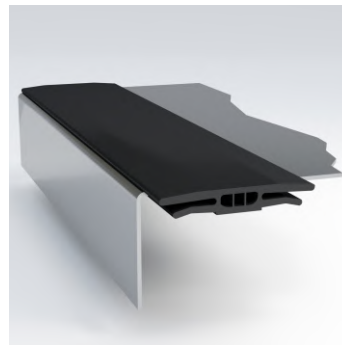
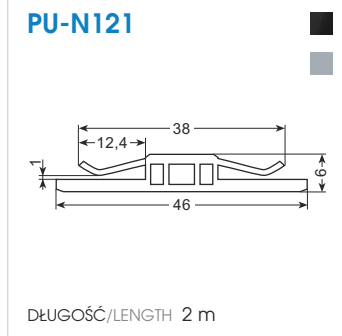
■ twarde PCV (czarny)
rigid PVC (black)



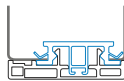
PROFIL PROFILE



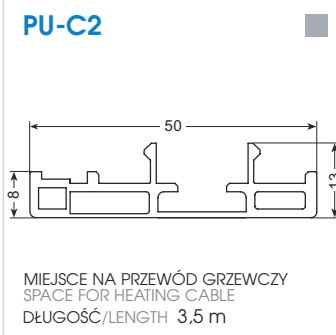
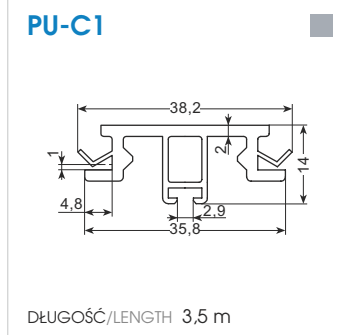
■ twarde PCV (szary)
rigid PVC (grey)
■ twarde PCV (czarny)
rigid PVC (black)



PROFIL PROFILE



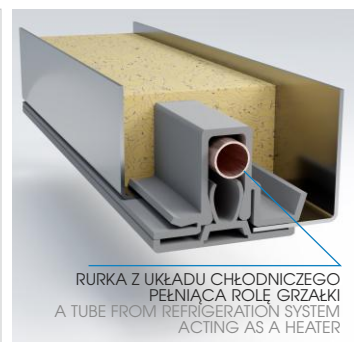
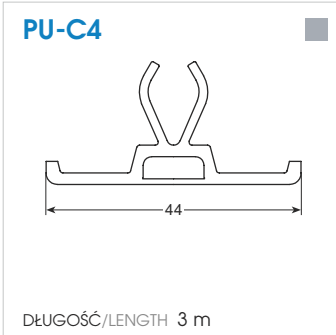
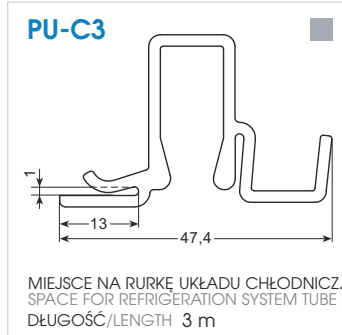
■ twarde PCV (szary)
rigid PVC (grey)



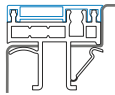
PROFIL PROFILE



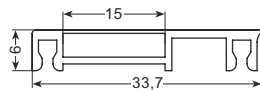
■ twarde PCV (szary)
rigid PVC (grey)



PROFIL
PROFILE

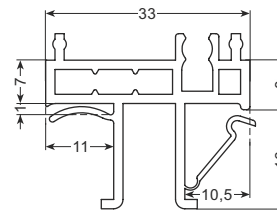


PU-106

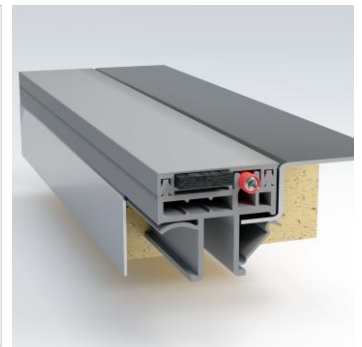


MIEJSCE NA MAGNES
SPACE FOR MAGNET
DŁUGOŚĆ/LENGTH 3,2 m

PU-107

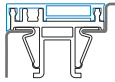


MIEJSCE NA PRZEWÓD GRZEWCZY
SPACE FOR HEATING CABLE
DŁUGOŚĆ/LENGTH 3,2 m

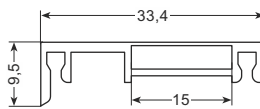


■ twarde PCV (szary)
rigid PVC (grey)

PROFIL
PROFILE

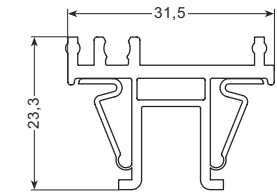


PU-206



MIEJSCE NA MAGNES
SPACE FOR MAGNET
DŁUGOŚĆ/LENGTH 3,2 m

PU-207

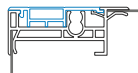


MIEJSCE NA PRZEWÓD GRZEWCZY
SPACE FOR HEATING CABLE
DŁUGOŚĆ/LENGTH 3,2 m

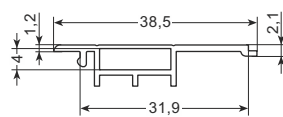


■ twarde PCV (szary)
rigid PVC (grey)

PROFIL
PROFILE

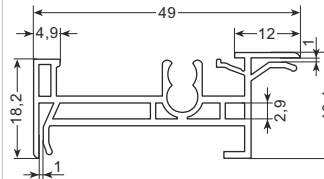


PU-506



MIEJSCE NA MAGNES
SPACE FOR MAGNET
DŁUGOŚĆ/LENGTH 3,25 m

PU-507

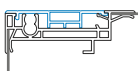


MIEJSCE NA PRZEWÓD GRZEWCZY
SPACE FOR HEATING CABLE
DŁUGOŚĆ/LENGTH 3,25 m

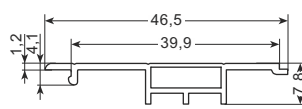


■ twarde PCV (szary)
rigid PVC (grey)

PROFIL
PROFILE

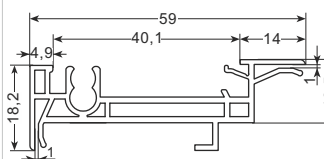


PU-606

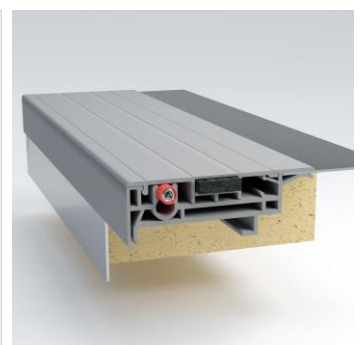


MIEJSCE NA MAGNES
SPACE FOR MAGNET
DŁUGOŚĆ/LENGTH 3,25 m

PU-607

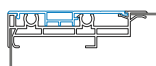


MIEJSCE NA PRZEWÓD GRZEWCZY
SPACE FOR HEATING CABLE
DŁUGOŚĆ/LENGTH 3,25 m

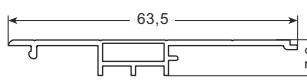


■ twarde PCV (szary)
rigid PVC (grey)

PROFIL
PROFILE

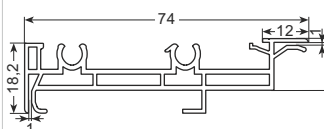


PU-756



MIEJSCE NA MAGNES
SPACE FOR MAGNET
DŁUGOŚĆ/LENGTH 3,25 m

PU-757



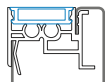
MIEJSCE NA PRZEWÓD GRZEWCZY (2x)
SPACE FOR HEATING CABLE (2x)
DŁUGOŚĆ/LENGTH 3,25 m



■ twarde PCV (szary)
rigid PVC (grey)

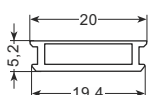
INNE DŁUGOŚCI I KOLORY NA ZAMÓWIENIE / OTHER LENGTHS AND COLORS ON REQUEST

PROFIL
PROFILE



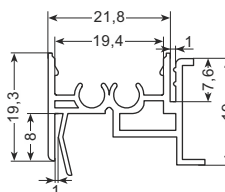
■ twarde PCV (szary)
rigid PVC (grey)

PU-226

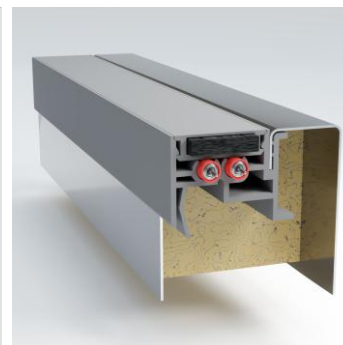


MIEJSCE NA MAGNES
SPACE FOR MAGNET
DŁUGOŚĆ/LENGTH 3,25 m

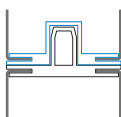
PU-227



MIEJSCE NA PRZEWÓD GRZEWCZY (2x)
SPACE FOR HEATING CABLE (2x)
DŁUGOŚĆ/LENGTH 3,25 m

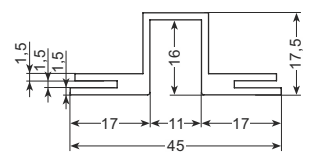


PROFILE DO ŁĄCZENIA
PŁASKICH ELEMENTÓW
IZOLOWANYCH
PROFILES FOR JOINING FLAT
INSULATED ELEMENTS



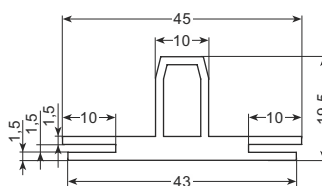
■ twarde PCV (szary)
rigid PVC (grey)

PU-F12

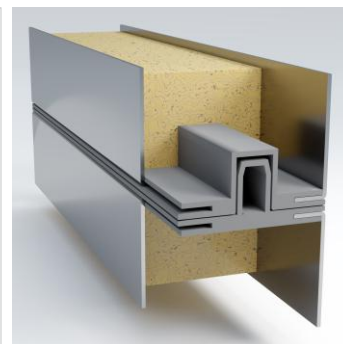


DŁUGOŚĆ/LENGTH 3 m

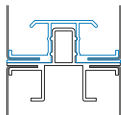
PU-F13



DŁUGOŚĆ/LENGTH 3 m

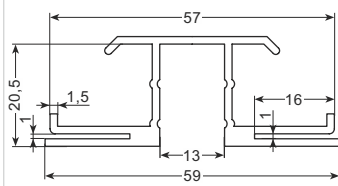


PROFILE DO ŁĄCZENIA
PŁASKICH ELEMENTÓW
IZOLOWANYCH
PROFILES FOR JOINING FLAT
INSULATED ELEMENTS



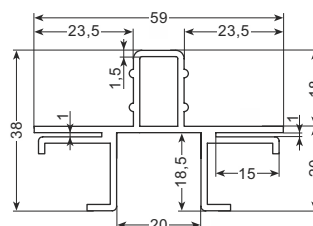
■ twarde PCV (szary)
rigid PVC (grey)

PU-F30

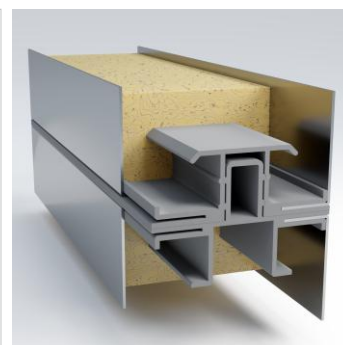


DŁUGOŚĆ/LENGTH 2,4 m

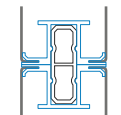
PU-F45



DŁUGOŚĆ/LENGTH 2,4 m

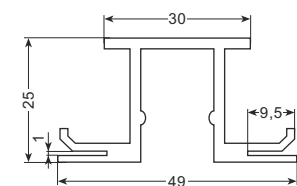


PROFILE DO ŁĄCZENIA
PŁASKICH ELEMENTÓW
IZOLOWANYCH
PROFILES FOR JOINING FLAT
INSULATED ELEMENTS



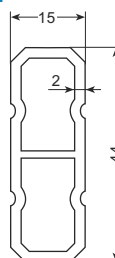
■ twarde PCV (szary)
rigid PVC (grey)

PU-F53

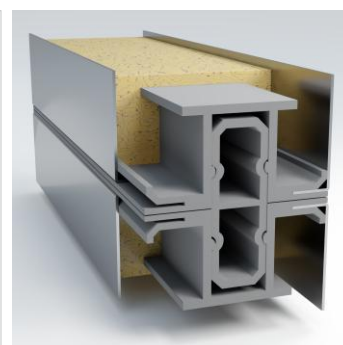


DŁUGOŚĆ/LENGTH 3,8 m

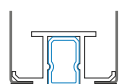
PU-F54



DŁUGOŚĆ/LENGTH 3,8 m

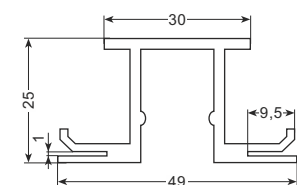


PROFILE DO ŁĄCZENIA
PŁASKICH ELEMENTÓW
IZOLOWANYCH
PROFILES FOR JOINING FLAT
INSULATED ELEMENTS



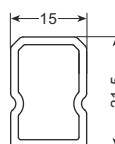
■ twarde PCV (szary)
rigid PVC (grey)

PU-F53

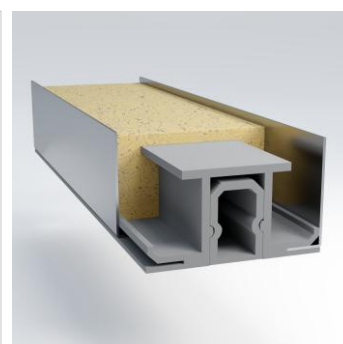


DŁUGOŚĆ/LENGTH 3,8 m




PU-F55



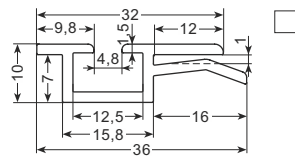
DŁUGOŚĆ/LENGTH 1,9 m



PROFIL BAZOWY USZCZELKI
BASE PROFILE FOR GASKET

-  twarde PCV (czarny, szary, biały)
rigid PVC (black, grey, white)
-  twarde PCV (szary)
rigid PVC (grey)
-  twarde PCV (biały)
rigid PVC (white)

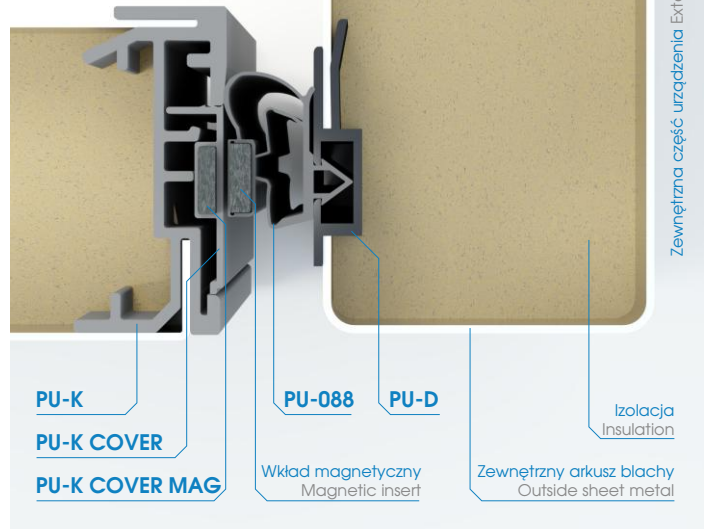
PU-D



DŁUGOŚĆ/LENGTH 2,4 m

WIDOK Z GÓRY
PRZEKRÓJ POPRZECZNY
TOP VIEW
CROSS SECTION

Niska temp. wewnątrz urządzenia
Low temp. inside unit



PU-K

PU-K COVER

PU-K COVER MAG

PU-088

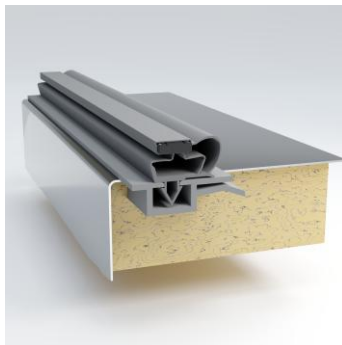
PU-D

Wkład magnetyczny
Magnetic insert

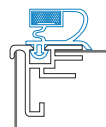
Zewnętrzny arkusz blachy
Outside sheet metal


Izolacja
Insulation

Zewnętrzna część urządzenia External unit side

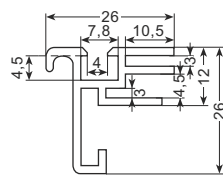


PROFIL BAZOWY USZCZELKI
BASE PROFILE FOR GASKET

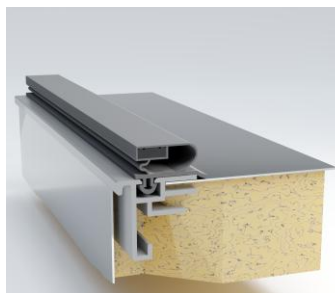


-  twarde PCV (czarny)
rigid PVC (black)
-  twarde PCV (szary)
rigid PVC (grey)

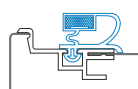
PU-N135



DŁUGOŚĆ/LENGTH 2 m

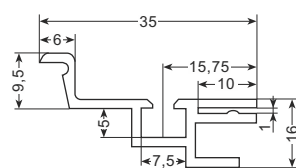


PROFIL BAZOWY USZCZELKI
BASE PROFILE FOR GASKET

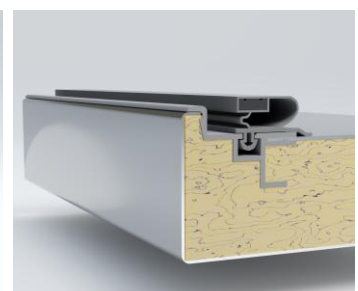
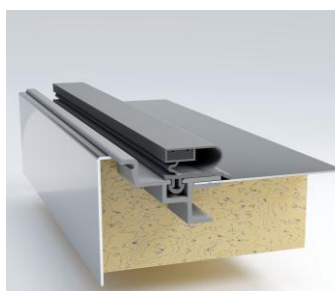


-  twarde PCV (szary)
rigid PVC (grey)

PU-N136



DŁUGOŚĆ/LENGTH 2 m

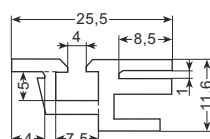


PROFIL BAZOWY USZCZELKI
BASE PROFILE FOR GASKET

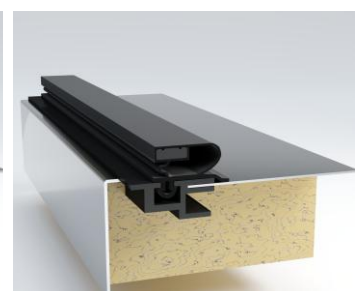
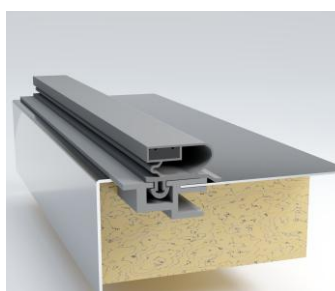


-  twarde PCV (czarny)
rigid PVC (black)
-  twarde PCV (szary)
rigid PVC (grey)

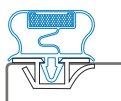
PU-N115



DŁUGOŚĆ/LENGTH 3 m

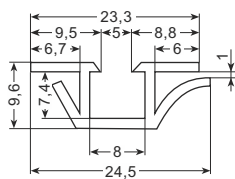


PROFIL BAZOWY USZCZELKI
BASE PROFILE FOR GASKET

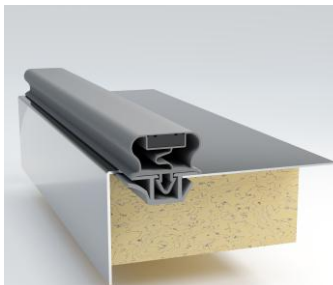


- twarde PCV (szary)
rigid PVC (grey)
- twarde PCV (biały)
rigid PVC (white)

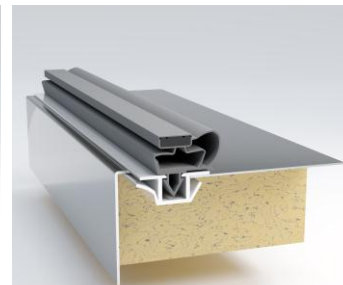
PU-5831



DŁUGOŚĆ/LENGTH 4 m

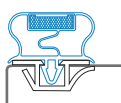


Z USZCZELKĄ/WITH GASKET **PU-033**



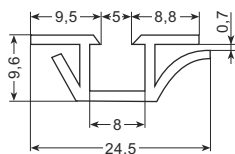
Z USZCZELKĄ/WITH GASKET **PU-088**

PROFIL BAZOWY USZCZELKI
BASE PROFILE FOR GASKET

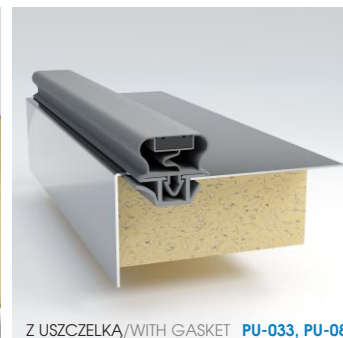


- twarde PCV (RAL7005)
rigid PVC (RAL7005)

PU-58317 (RAL7005)



DŁUGOŚĆ/LENGTH 4 m



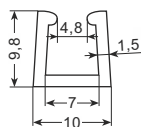
Z USZCZELKĄ/WITH GASKET **PU-033, PU-088**

PROFIL BAZOWY USZCZELKI
BASE PROFILE FOR GASKET



- twarde PCV (grey)
rigid PVC (grey)

PU-5039



DŁUGOŚĆ/LENGTH 3/3,5 m



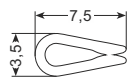
Z USZCZELKĄ/WITH GASKET **PU-P**

PROFIL
(zabezpieczenie krawędzi
arkusza blachy)
PROFILE
(sheet edge protection)

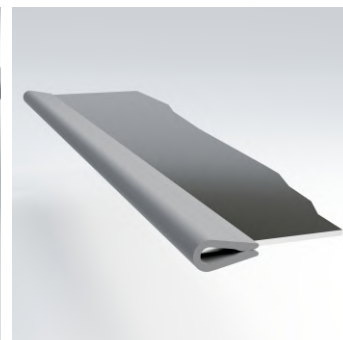
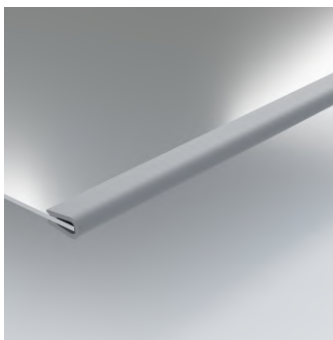


- twarde PCV (szary)
rigid PVC (grey)

PU-387



DŁUGOŚĆ/LENGTH 3 m



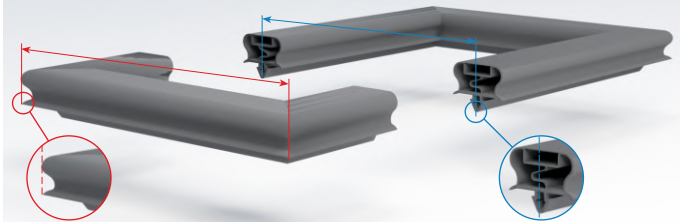
Uszczelki magnetyczne to niezbędny komponent każdego mebla chłodniczego. Zapewniają szczelne przyleganie drzwi i utrzymanie odpowiedniej temperatury w komorze.

Magnetic gaskets are an essential component of every refrigerated furniture. They ensure tight fitting of the door and maintain the right temperature in the chamber.



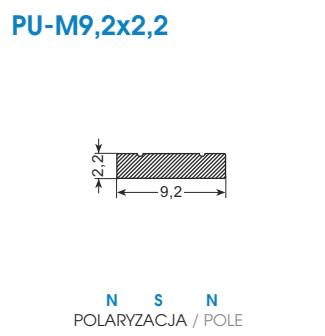
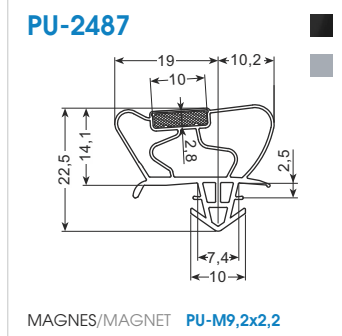
- Krótkie terminy realizacji (od 7 do 30 dni)
Short lead times (from 7 to 30 days)
- Uszczelki wykonane z wytrzymałego materiału: PCV, PCV+rubber, TPE
Magnetic gaskets made of durable material: PVC, PVC+rubber, TPE
- Wkłady magnetyczne z siłą przyciągania: od ≥ 31 do ≥ 75 g/cm₂
Magnetic inserts with attraction: from ≥ 31 up to ≥ 75 g/cm₂
- Kontrola jakości produktu na każdym etapie produkcji
Product quality control at every stage of production
- Realizujemy indywidualne zamówienia
Realize individual orders
- Zapewniamy pomoc techniczną oraz doradztwo podczas współpracy
Provide technical assistance and consultancy during cooperation

Przy zamówieniu prosimy podawać wymiary zewnętrzne albo w osi uszczelki!
When ordering please indicate external dimensions or in the axis of gasket!



USZCZELKA MAGNETYCZNA
MAGNETIC GASKET

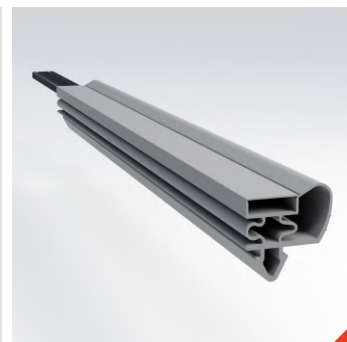
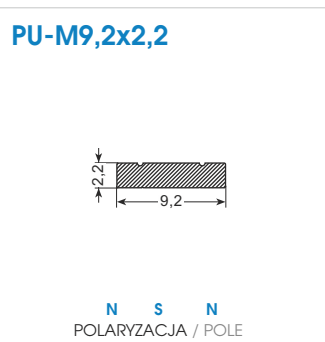
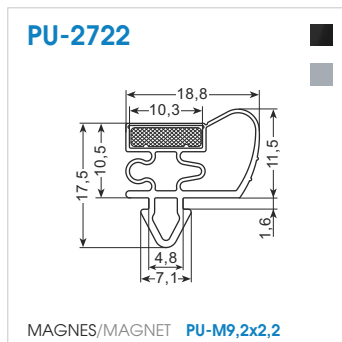
- miękkie PCV (czarny)
soft PVC (black)
- miękkie PCV (szary)
soft PVC (grey)



ZGRZEWANA W AiFO/WELDED IN AiFO

USZCZELKA MAGNETYCZNA
MAGNETIC GASKET

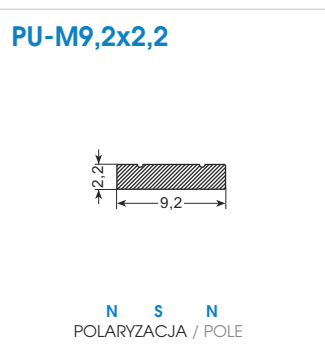
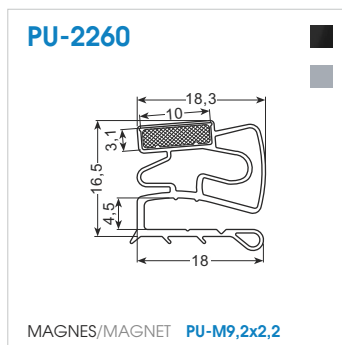
- miękkie PCV (czarny)
soft PVC (black)
- miękkie PCV (szary)
soft PVC (grey)



ZGRZEWANA W AiFO/WELDED IN AiFO

USZCZELKA MAGNETYCZNA
MAGNETIC GASKET

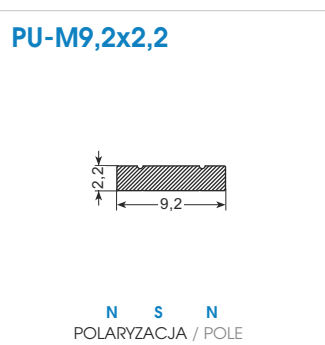
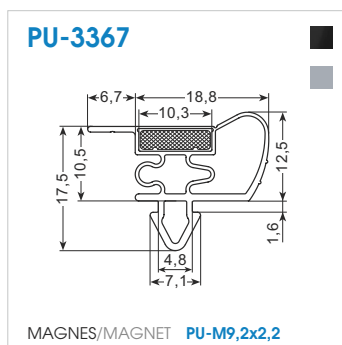
- miękkie PCV (czarny)
soft PVC (black)
- miękkie PCV (szary)
soft PVC (grey)



ZGRZEWANA W AiFO/WELDED IN AiFO

USZCZELKA MAGNETYCZNA
MAGNETIC GASKET

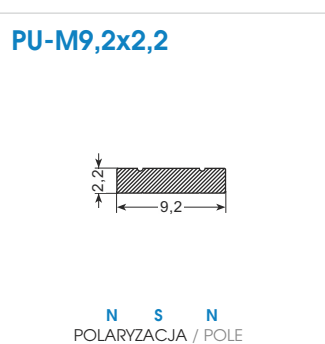
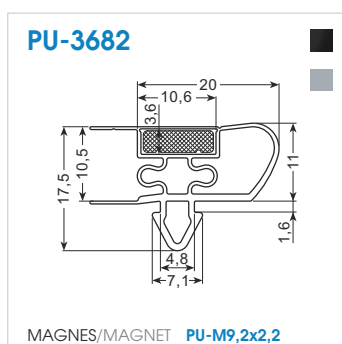
- miękkie PCV (czarny)
soft PVC (black)
- miękkie PCV (szary)
soft PVC (grey)



ZGRZEWANA W AiFO/WELDED IN AiFO

USZCZELKA MAGNETYCZNA
MAGNETIC GASKET

- miękkie PCV (czarny)
soft PVC (black)
- miękkie PCV (szary)
soft PVC (grey)

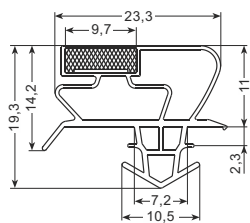


ZGRZEWANA W AiFO/WELDED IN AiFO

USZCZELKA MAGNETYCZNA
MAGNETIC GASKET

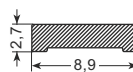
- miękkie PCV (RAL7035, RAL7001, czarny, szary)
- soft PVC (RAL7035, RAL7001, black, grey)

PU-090

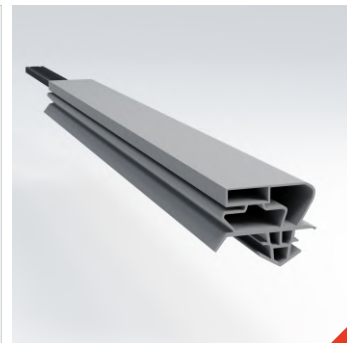


MAGNES/MAGNET **PU-M8,9x2,7**

PU-M8,9x2,7



S N S
POLARYZACJA / POLE

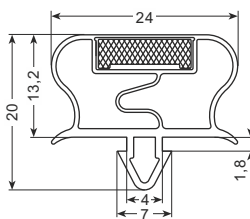


ZGRZEWANA W AiFO/WELDED IN AiFO

USZCZELKA MAGNETYCZNA
MAGNETIC GASKET

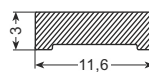
- miękkie PCV (czarny)
- soft PVC (black)
- miękkie PCV (szary)
- soft PVC (grey)

PU-033



TWARDOŚĆ/HARDNESS 64/74 Shore
MAGNES/MAGNET **PU-M11,6x3,0**

PU-M11,6x3,0



S N S
POLARYZACJA / POLE

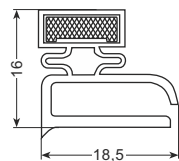


ZGRZEWANA W AiFO/WELDED IN AiFO

USZCZELKA MAGNETYCZNA
MAGNETIC GASKET

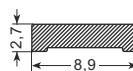
- miękkie PCV (czarny)
- soft PVC (black)
- miękkie PCV (szary)
- soft PVC (grey)

PU-200M



MAGNES/MAGNET **PU-M8,9x2,7**

PU-M8,9x2,7



S N S
POLARYZACJA / POLE

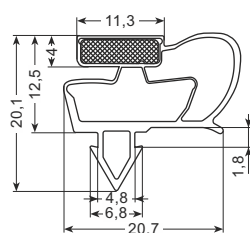


ZGRZEWANA W AiFO/WELDED IN AiFO

USZCZELKA MAGNETYCZNA
MAGNETIC GASKET

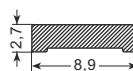
- miękkie PCV (szary)
- soft PVC (grey)

PU-088

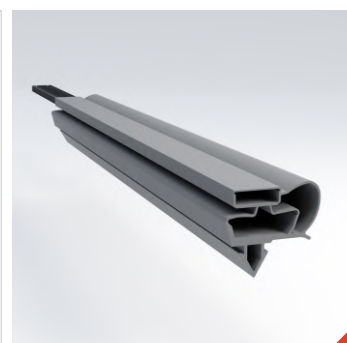


MAGNES/MAGNET **PU-M8,9x2,7**

PU-M8,9x2,7



S N S
POLARYZACJA / POLE

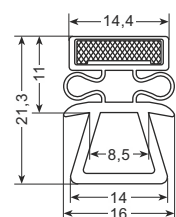


ZGRZEWANA W AiFO/WELDED IN AiFO

USZCZELKA MAGNETYCZNA
MAGNETIC GASKET

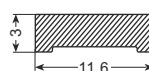
- miękkie PCV (szary)
- soft PVC (grey)

PU-503

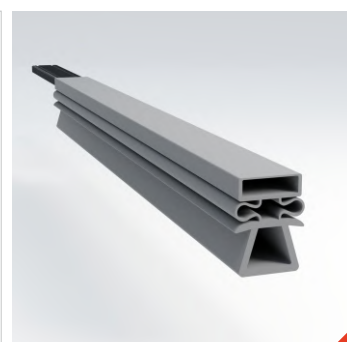


MAGNES/MAGNET **PU-M11,6x3,0**

PU-M11,6x3,0



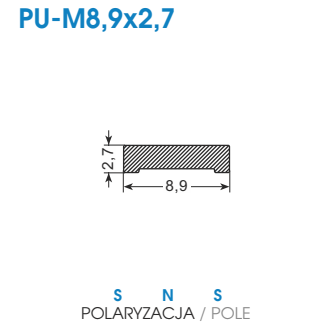
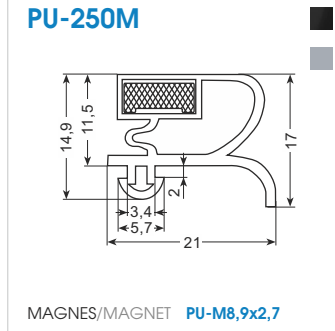
S N S
POLARYZACJA / POLE



ZGRZEWANA W AiFO/WELDED IN AiFO

USZCZELKA MAGNETYCZNA
MAGNETIC GASKET

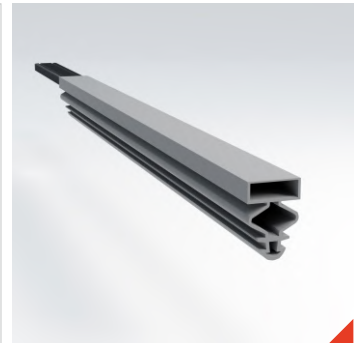
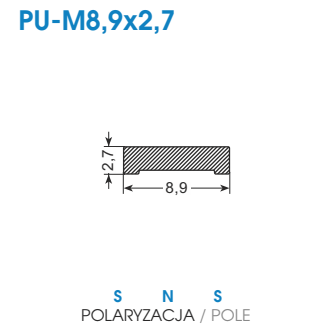
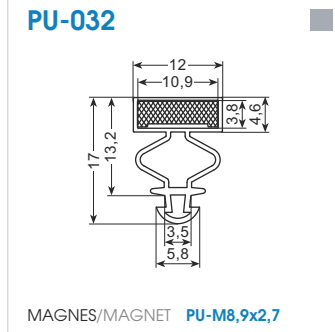
- miękkie PCV (czarny)
soft PVC (black)
- miękkie PCV (szary)
soft PVC (grey)



ZGRZEWANA W AiFO/WELDED IN AiFO

USZCZELKA MAGNETYCZNA
MAGNETIC GASKET

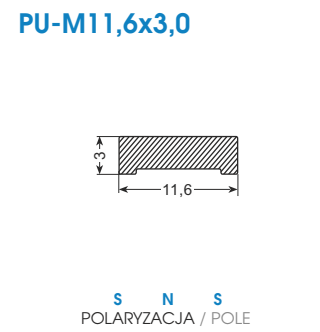
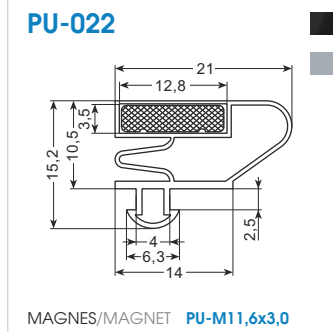
- miękkie PCV (szary)
soft PVC (grey)



ZGRZEWANA W AiFO/WELDED IN AiFO

USZCZELKA MAGNETYCZNA
MAGNETIC GASKET

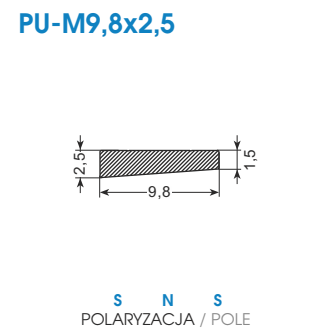
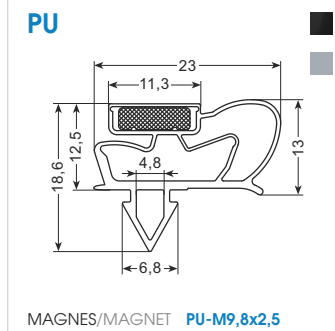
- miękkie PCV (czarny)
soft PVC (black)
- miękkie PCV (szary)
soft PVC (grey)



ZGRZEWANA W AiFO/WELDED IN AiFO

USZCZELKA MAGNETYCZNA
MAGNETIC GASKET

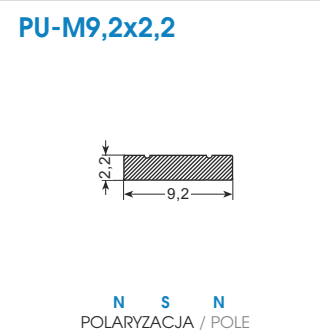
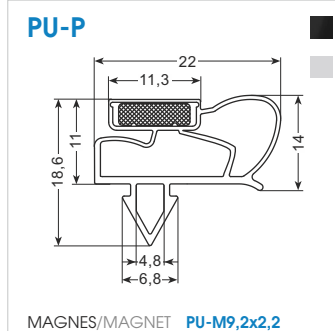
- miękkie PCV (czarny)
soft PVC (black)
- miękkie PCV (szary)
soft PVC (grey)



ZGRZEWANA W AiFO/WELDED IN AiFO

USZCZELKA MAGNETYCZNA
MAGNETIC GASKET

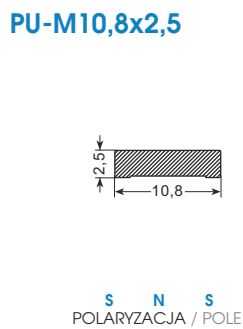
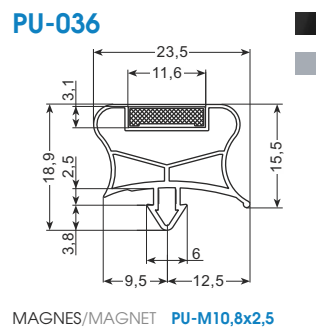
- miękkie PCV (czarny)
soft PVC (black)
- miękkie PCV (jasny szary)
soft PVC (light grey)



ZGRZEWANA WEDŁUG SPECYFIKACJI KLIENTA/WELDED TO CUSTOMER SPECIFICATIONS

USZCZELKA MAGNETYCZNA
MAGNETIC GASKET

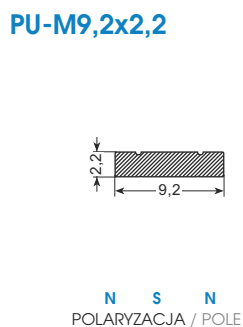
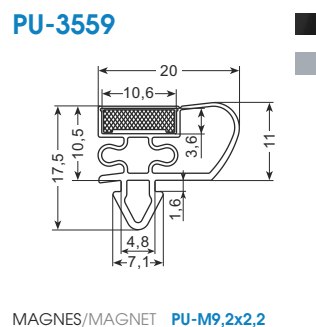
- czarny TPE
black TPE
- szary TPE (RAL7035)
grey TPE (RAL7035)



ZGRZEWANA W AiFO/WELDED IN AiFO

USZCZELKA MAGNETYCZNA
MAGNETIC GASKET

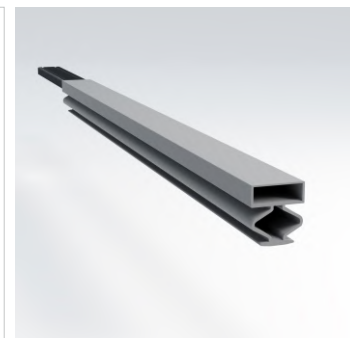
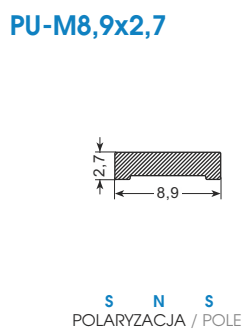
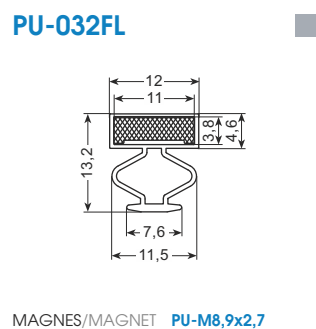
- miękkie PCV (czarny)
soft PVC (black)
- miękkie PCV (szary)
soft PVC (grey)



ZGRZEWANA W AiFO/WELDED IN AiFO

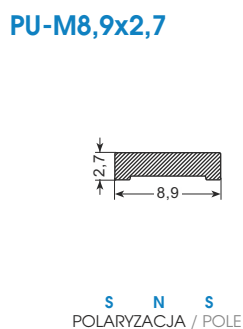
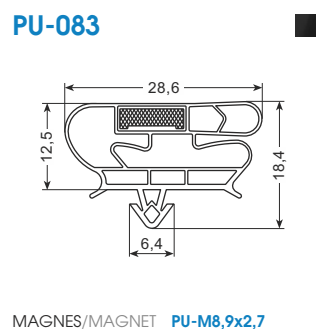
USZCZELKA MAGNETYCZNA
MAGNETIC GASKET

- miękkie PCV (szary)
soft PVC (grey)



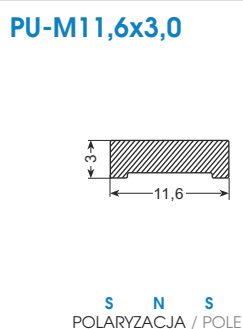
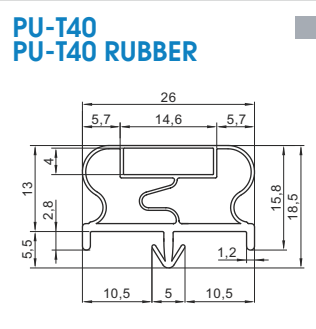
USZCZELKA MAGNETYCZNA
MAGNETIC GASKET

- miękkie PCV (czarny)
soft PVC (black)



USZCZELKA
GASKET

- miękkie PCV (szary)
soft PVC (grey)
- miękkie PCV + RUBBER (szary)
soft PVC + RUBBER (grey)

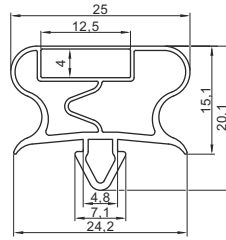


ZGRZEWANA W AiFO/WELDED IN AiFO

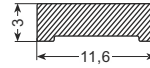
**USZCZELKA
GASKET**

miękkie PCV (szary, RAL7005)
soft PVC (grey, RAL7005)

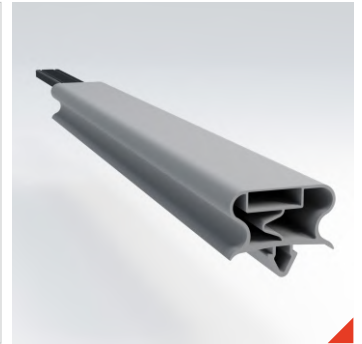
PU-034 GREY



PU-M11,6x3,0



N S N
POLARYZACJA / POLE



ZGRZEWANA W AiFO/WELDED IN AiFO

**USZCZELKI MAGNETYCZNE
DO URZĄDZEŃ GRZEWczyCH
MAGNETIC GASKETS
FOR WARMING DEVICES**



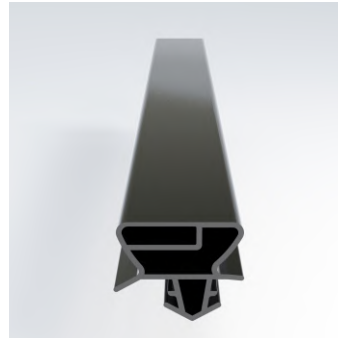
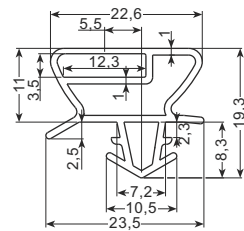
PRZYKŁAD ZASTOSOWANIA
APPLICATION EXAMPLE

ZAKRES TEMPERATURY/TEMPERATURE RANGE: -40/+180°C

**USZCZELKA MAGNETYCZNA
DO URZĄDZEŃ GRZEWczyCH
MAGNETIC GASKET
FOR WARMING DEVICES**

silikon MVQ (czarny)
silicone MVQ (black)

PU-090 HOT

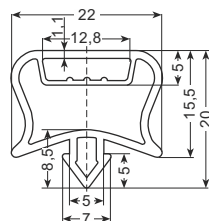


WULKANIZOWANA ZGODNIE ZE SPECYFIKACJĄ KLIENTA / VULCANIZED ACCORDING TO CUSTOMER SPECIFICATIONS

**USZCZELKA MAGNETYCZNA
DO URZĄDZEŃ GRZEWczyCH
MAGNETIC GASKET
FOR WARMING DEVICES**

silikon MVQ (czarny)
silicone MVQ (black)

PU-033 HOT



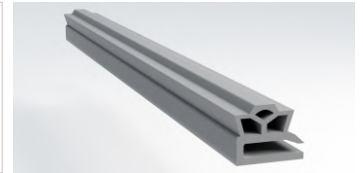
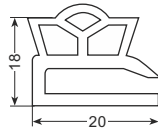
WULKANIZOWANA ZGODNIE ZE SPECYFIKACJĄ KLIENTA / VULCANIZED ACCORDING TO CUSTOMER SPECIFICATIONS

PARAMETRY TECHNICZNE / TECHNICAL SPECIFICATIONS

| ODPORNOŚĆ PALNOŚCIOWA FLAMMABILITY RESISTANCE | ZAKRES TEMPERATURY TEMPERATURE RANGE | TWARDOŚĆ HARDNESS | ODPORNOŚĆ NA WARUNKI RESISTANCE TO CONDITIONS | WYTRZ. NA ROZERWANIE TEARING STRENGTH | KOLOR COLOR | CERTYFIKATY CERTIFICATES |
|--|---|----------------------|--|--|---------------------------|-------------------------------|
| UL 94 HB | -40/+180°C | 80+/-5 ShA | UV, O ₃ | 10.1MPa | RAL9017 (CZARNY/BLACK) | FDA, PZH, BFR, REACH, ROHS |

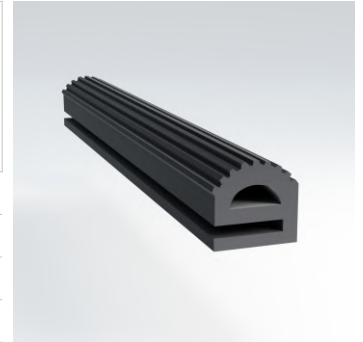
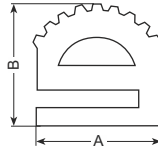
USZCZELKA
GASKET


PU-104



 miękkie PCV (czarny, szary)
soft PVC (black, grey)

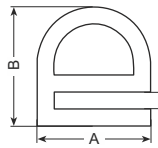
USZCZELKA
GASKET



 guma naturalna (czarny)
natural rubber (black)

| SYMBOL | UK-360 | UK-362 | UK-365 | UK-370 |
|-----------------------|--------------------|--------------------|--------------------|--------------------|
| WYMIARY DIMENSIONS | A 13 mm B 12 mm | A 17 mm B 10 mm | A 16 mm B 14 mm | A 24 mm B 17 mm |
| DŁUGOŚĆ LENGTH | 25 m | 25 m | 25 m | 6 m |
| WAGA WEIGHT | 3,1 kg | 3,5 kg | 3,6 kg | 1,3 kg |

USZCZELKA
GASKET

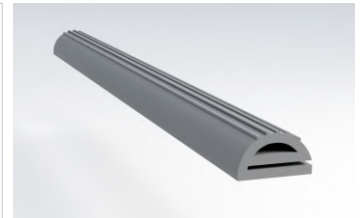


 silikon
silicone

| SYMBOL | PU-788 | PU-002 | PU-014 |
|---------------------------------------|---------------------------|---------------------------|---------------------------|
| WYMIARY DIMENSIONS | A 12 mm B 13 mm C 2 mm | A 15 mm B 13 mm C 1 mm | A 20 mm B 21 mm C 3 mm |
| ZAKRES TEMPERATURY/TEMPERATURE RANGE: | -40/+200°C | | |

USZCZELKA
GASKET

PU-396

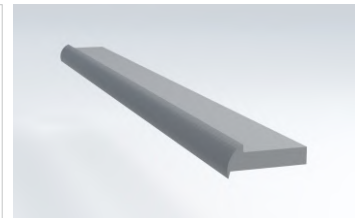
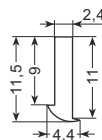


 silikon
silicone

ZAKRES TEMPERATURY/TEMPERATURE RANGE: -40/+200°C

USZCZELKA
GASKET

PU-1677

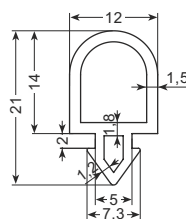


 silikon (szary)
silicone (grey)

ZAKRES TEMPERATURY/TEMPERATURE RANGE: -40/+230°C

USZCZELKA
GASKET

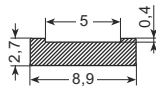
PU-1221



 silikon
silicone

ZAKRES TEMPERATURY/TEMPERATURE RANGE: -50/+200°C

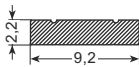
WKŁAD MAGNETYCZNY
 MAGNETIC INSERT

PU-M8,9x2,7


S N S
POLARYZACJA / POLE

| | |
|--|---|
| WAGA WEIGHT | 80 ±6 g/m |
| SIŁA PRZYCIĄGANIA FORCE OF ATTRACTION | ≥37 g/cm |
| TWARDOŚĆ HARDNESS | 96,5~98Hs(A) |
| ELASTYCZNOŚĆ FLEXIBILITY | ≥30 % |
| WYTRZYMAŁOŚĆ ANTI-STRETCH FORCE | 60 ±16 kg/cm ² |
| STOSOWANY Z USZCZELKĄ USING WITH GASKET | PU-200M, PU-250M, PU-090, PU-088 |

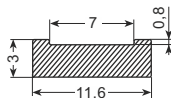

WKŁAD MAGNETYCZNY
 MAGNETIC INSERT

PU-M9,2x2,2


N S N
POLARYZACJA / POLE

| | |
|--|--------------|
| WAGA WEIGHT | 73 ±3 g/m |
| SIŁA PRZYCIĄGANIA FORCE OF ATTRACTION | 31 ±10% g/cm |
| TWARDOŚĆ HARDNESS | 96,5~98Hs(A) |
| ELASTYCZNOŚĆ FLEXIBILITY | ≥30 % |
| STOSOWANY Z USZCZELKĄ USING WITH GASKET | PU-P |

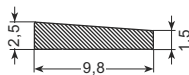

WKŁAD MAGNETYCZNY
 MAGNETIC INSERT

PU-M11,6x3,0


S N S
POLARYZACJA / POLE

| | |
|--|---------------------------|
| WAGA WEIGHT | 108 ±6 g/m |
| SIŁA PRZYCIĄGANIA FORCE OF ATTRACTION | 42 g/cm |
| TWARDOŚĆ HARDNESS | 96,5~98Hs(A) |
| ELASTYCZNOŚĆ FLEXIBILITY | ≥30 % |
| WYTRZYMAŁOŚĆ ANTI-STRETCH FORCE | 60 ±16 kg/cm ² |
| STOSOWANY Z USZCZELKĄ USING WITH GASKET | PU-033, PU-503 |

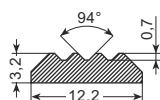

WKŁAD MAGNETYCZNY
 MAGNETIC INSERT

PU-M9,8x2,5


S N S
POLARYZACJA / POLE

| | |
|--|-------------------------|
| WAGA WEIGHT | 42 g/m |
| SIŁA PRZYCIĄGANIA FORCE OF ATTRACTION | ≥55 g/cm |
| TWARDOŚĆ HARDNESS | 96,5~98Hs(A) |
| ELASTYCZNOŚĆ FLEXIBILITY | ≥30 % |
| STOSOWANY Z USZCZELKĄ USING WITH GASKET | PU, PU-P, PU-088 |


WKŁAD MAGNETYCZNY
 MAGNETIC INSERT

PU-M12,2x3,2


N S N
POLARYZACJA / POLE

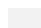

| | |
|--|---|
| SIŁA PRZYCIĄGANIA FORCE OF ATTRACTION | ≥75 g/cm ² |
| TWARDOŚĆ HARDNESS | 96,5~98Hs(A) |
| ELASTYCZNOŚĆ FLEXIBILITY | ≥30 % |
| STOSOWANY Z PROFILAMI USING WITH PROFILES | PU-106, PU-107, PU-206, PU-207, PU-226, PU-227, PU-506, PU-507 |

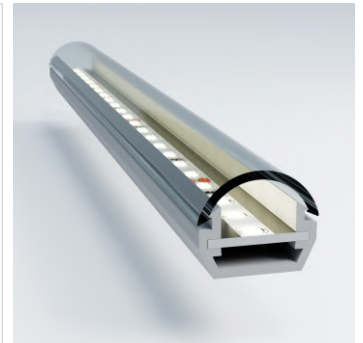
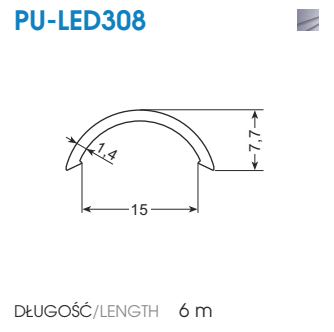
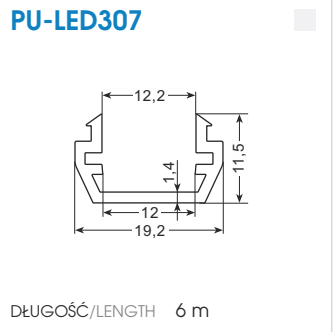




PU-LED307
PROFIL BAZOWY LED
LED BASE PROFILE

PU-LED308
OSŁONA LED
LED COVER PROFILE

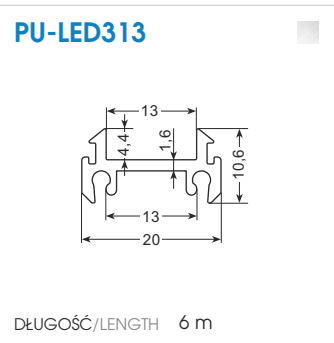
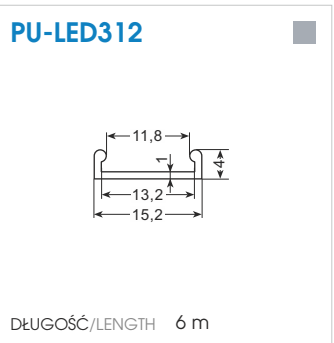
-  PCV (biały)
PVC (white)
-  przezroczysty poliwęglan
transparent polycarbonate



PU-LED312
PROFIL BAZOWY LED
LED BASE PROFILE

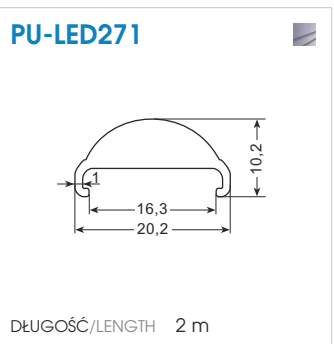
PU-LED313
PROFIL LED
LED PROFILE

-  PCV (szary)
PVC (grey)
-  aluminium
-  aluminium



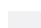
PU-LED271
OSŁONA LED
LED COVER PROFILE

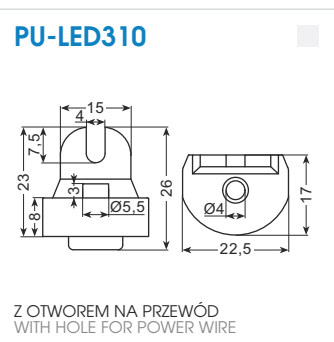
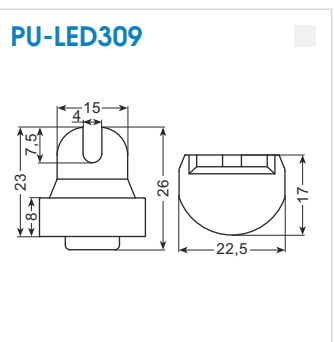
-  przezroczysty PMMA
transparent PMMA



PU-LED309
ZAKOŃCZENIE
END CAP

PU-LED310
ZAKOŃCZENIE
END CAP

-  ABS (biały)
ABS (white)

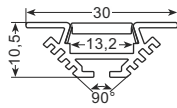


**PROFIL LED
LED PROFILE**

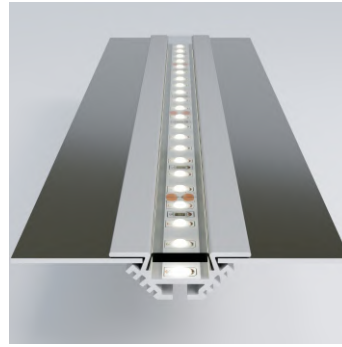


aluminium
aluminium

PU-LED01



W KOMPLEKIE PRZEŹROCZYSTA
OSŁONA PCV / SUPPLIED WITH
TRANSPARENT PVC COVER
DŁUGOŚĆ/LENGTH 2 m



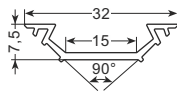
**PU-LED02
PROFIL LED
LED PROFILE**

**PU-LED02-OP/OM
OSŁONA PROFILA LED
LED PROFILE COVER**



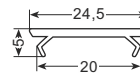
aluminium
aluminium
przeźroczyste lub mleczne PCV
transparent or frosted PVC

PU-LED02



DŁUGOŚĆ/LENGTH 3 m

**PU-LED02-OP
PU-LED02-OM**

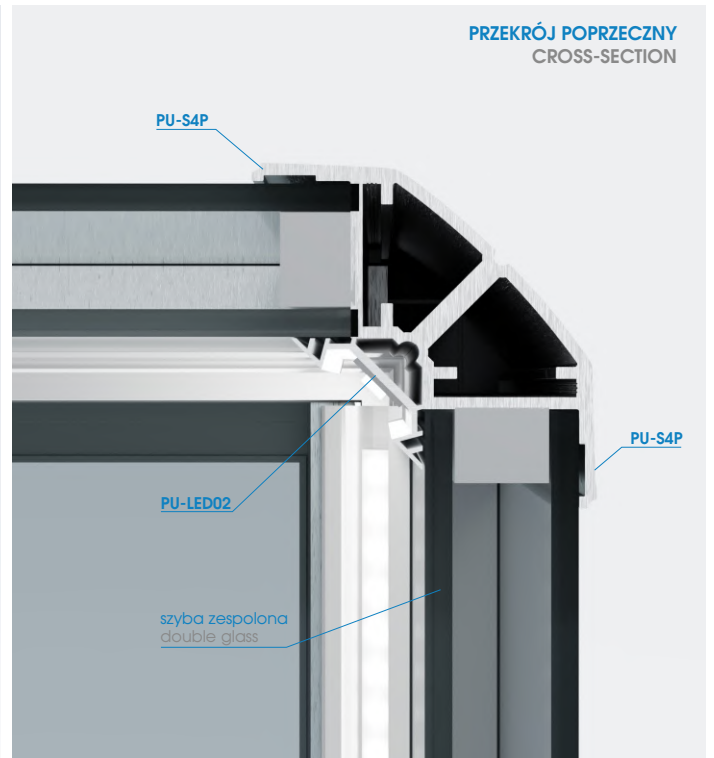
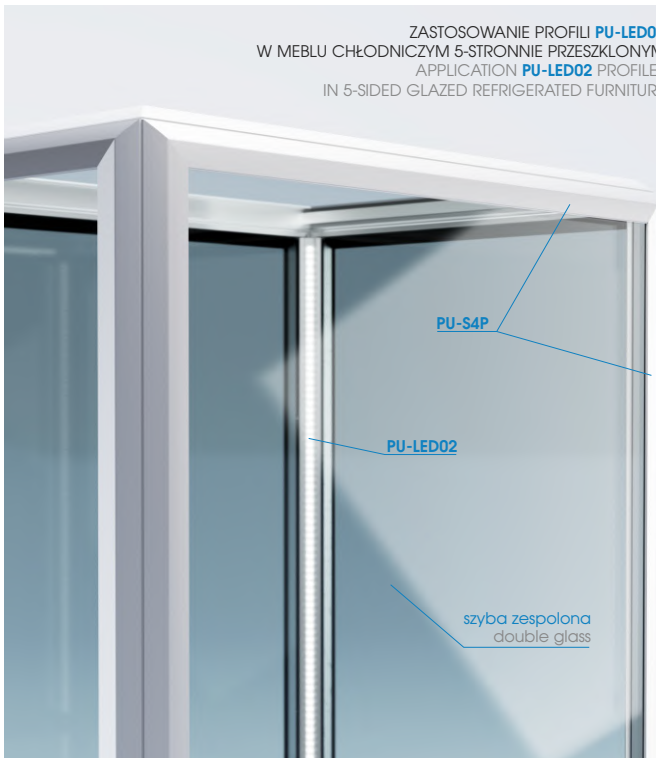


DŁUGOŚĆ/LENGTH 3 m



ZASTOSOWANIE PROFILI **PU-LED02**
W MEBLU CHŁODNICZYM 5-STRONNIE PRZESZKLONYM
APPLICATION **PU-LED02** PROFILES
IN 5-SIDED GLAZED REFRIGERATED FURNITURE

**PRZEKRÓJ POPRZECZNY
CROSS-SECTION**



PU-LED02-OM
osłona mleczna / frosted cover

PU-LED02
profil LED / LED profile



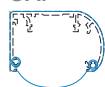
PU-LED02-OP
osłona przeźroczysta / transparent cover

DŁUGOŚĆ PROFILI / PROFILES LENGTH 3 m



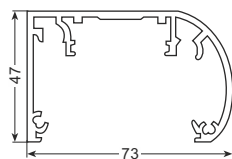
PU-LPS/R
PROFIL LAMPY
LIGHT CANOPY PROFILE

PU-LTP/1
ZAŚLEPKA PROFILA LAMPY
LIGHT CANOPY END CAP



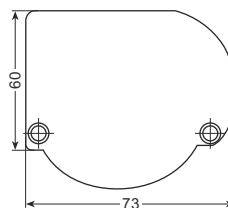
aluminium
aluminium

PU-LPS/R

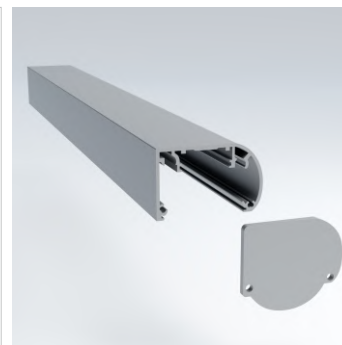


DŁUGOŚĆ/LENGTH 3 m

PU-LTP/1

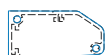


L=LEWA/L=LEFT
R=PRAWA/R=RIGHT



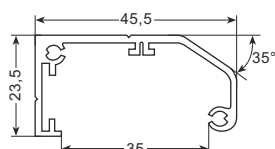
PU-L4066
PROFIL LAMPY LED
LED LIGHT CANOPY PROFILE

PU-L4066 L/P
ZAŚLEPKA PROFILA LAMPY
LIGHT CANOPY END CAP



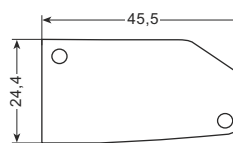
aluminium
aluminium

PU-L4066



DŁUGOŚĆ/LENGTH 3 m

PU-L4067 L/P

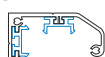


L=LEWA/L=LEFT
R=PRAWA/R=RIGHT



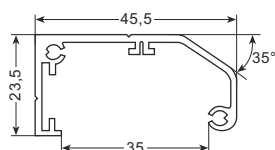
PU-L4066
PROFIL LAMPY LED
LED LIGHT CANOPY PROFILE

PU-LTP14
WSPORNIK PROFILA LAMPY
LAMP PROFILE SUPPORT



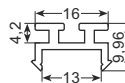
aluminium
aluminium
twarde PCV (szary)
rigid PVC (grey)

PU-L4066

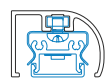


DŁUGOŚĆ/LENGTH 3 m

PU-LTP14

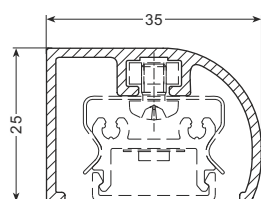


PROFIL LAMPY LED
LED LIGHT CANOPY PROFILE

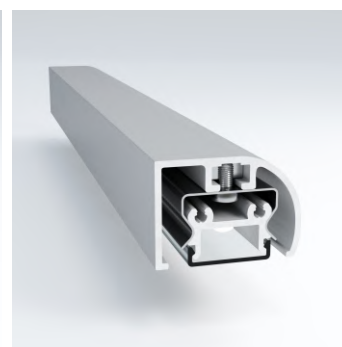
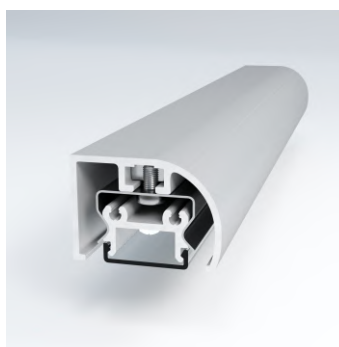


aluminium
aluminium

LS-051.0200



DŁUGOŚĆ/LENGTH 5 m

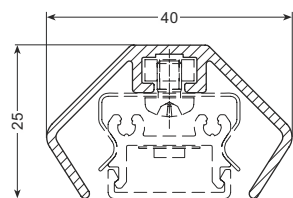


PROFIL LAMPY LED
LED LIGHT CANOPY PROFILE

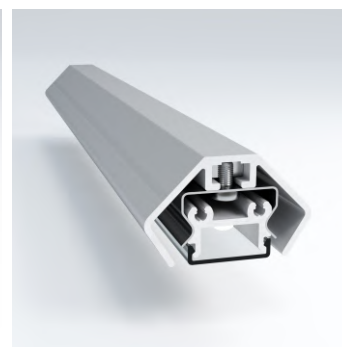
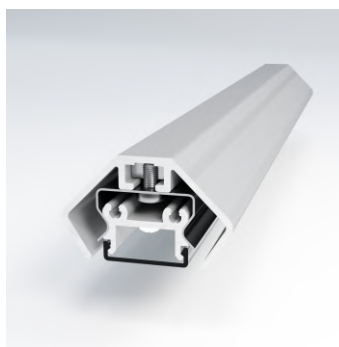


aluminium
aluminium

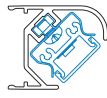
LS-051.2200



DŁUGOŚĆ/LENGTH 5 m

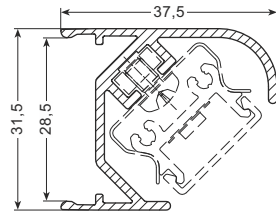


PROFIL LAMPY LED
LED LIGHT CANOPY PROFILE

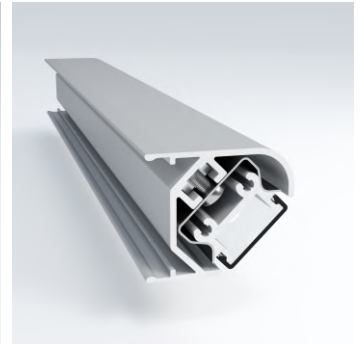
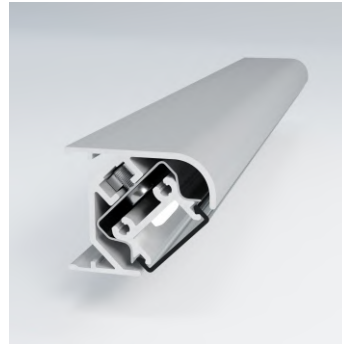


aluminium
aluminium

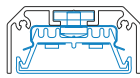
LS-095.1200



DŁUGOŚĆ/LENGTH 5 m

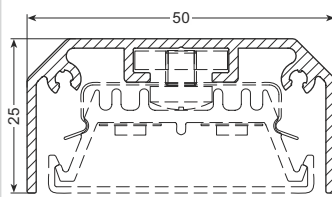


PROFIL LAMPY LED
LED LIGHT CANOPY PROFILE

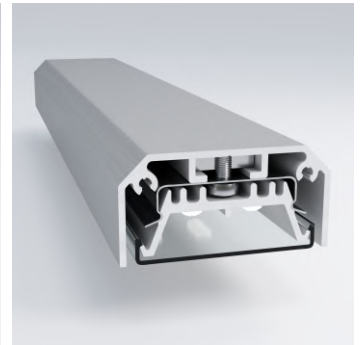
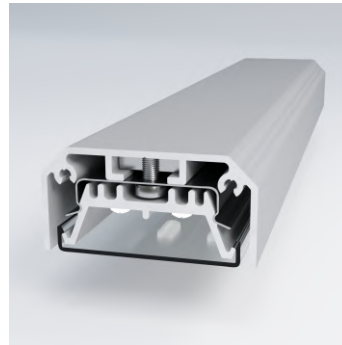


aluminium
aluminium

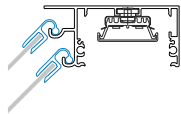
LS-095.0200



DŁUGOŚĆ/LENGTH 5.2 m

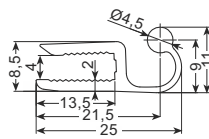


PROFIL PRZYSŁONEK PLEXI
PLEXIGLAS COVERS PROFILE



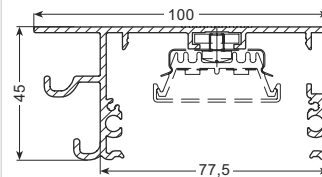
przezroczyste PCV
transparent PVC
aluminium
aluminium

PU-003

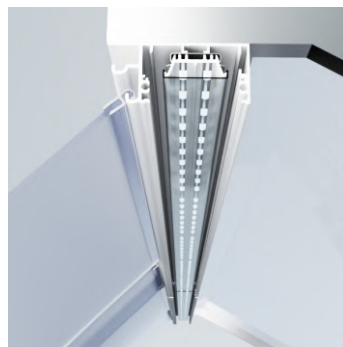
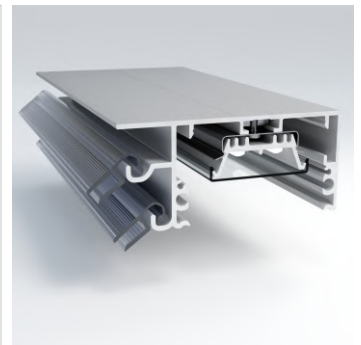


DŁUGOŚĆ/LENGTH 3 m

LS-117.0800

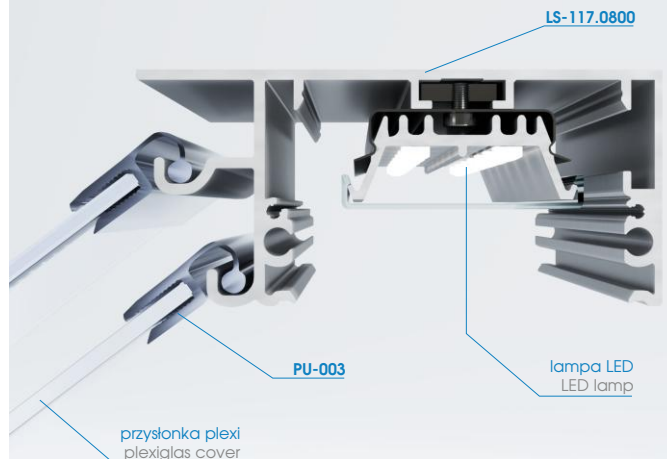


DŁUGOŚĆ/LENGTH 5.2 m



ZASTOSOWANIE PRZESŁONEK W LADACH CHŁODNICZYCH
PLEXIGLAS COVERS APPLICATION IN REFRIGERATED COUNTERS

PRZEKRÓJ POPRZECZNY
PROFIL LAMPY LED I PRZYSŁONEK PLEXI
CROSS-SECTION
LED LIGHT CANOPY AND PLEXIGLAS COVERS PROFILE



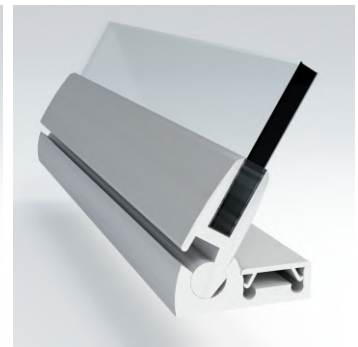
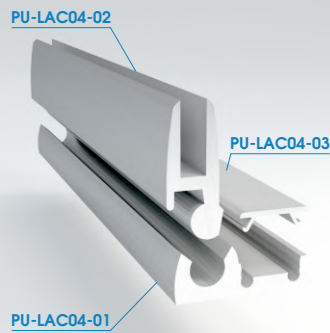
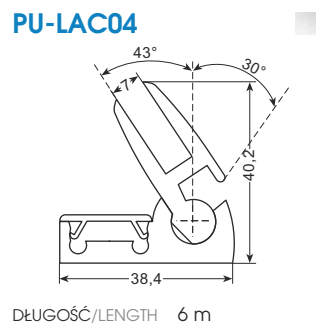
LS-117.0800

PU-003

lampa LED
LED lamp

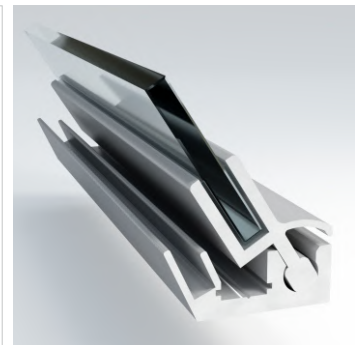
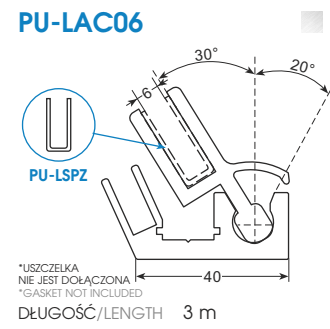
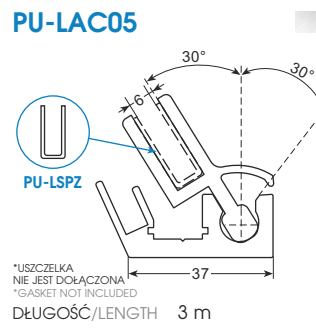
przysłonka plexi
plexiglas cover

ZAWIAS SZYBY FRONTOWEJ
HINGE FOR FRONT GLASS



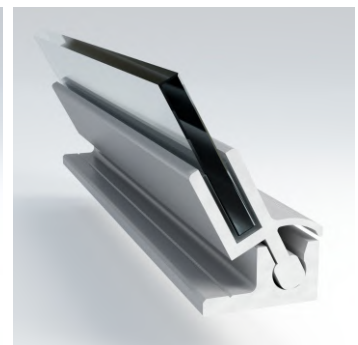
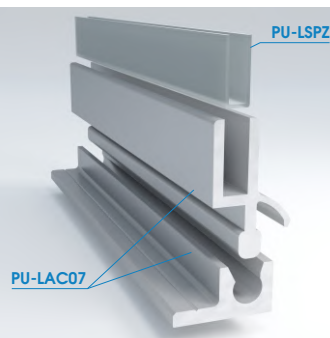
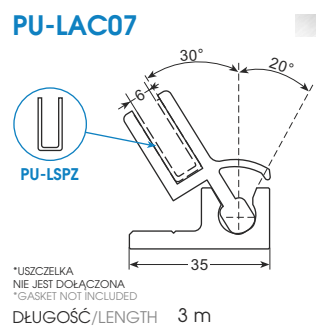
 anodowane aluminium
anodized aluminium

ZAWIAS SZYBY FRONTOWEJ
HINGE FOR FRONT GLASS



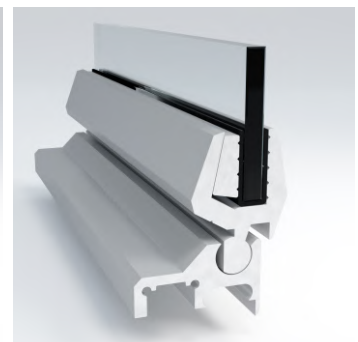
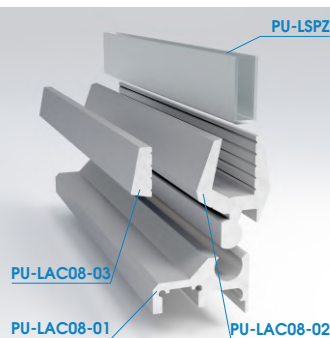
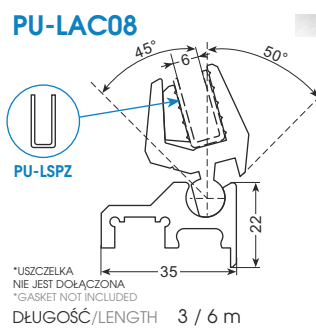
 anodowane aluminium
anodized aluminium

ZAWIAS SZYBY FRONTOWEJ
HINGE FOR FRONT GLASS



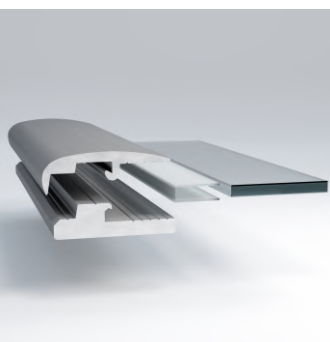
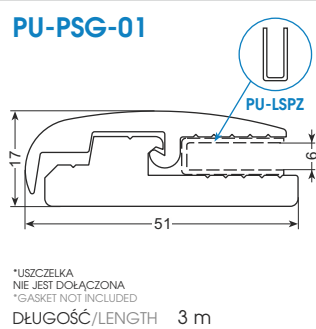
 anodowane aluminium
anodized aluminium

ZAWIAS SZYBY FRONTOWEJ
HINGE FOR FRONT GLASS



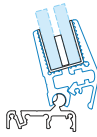
 anodowane aluminium
anodized aluminium

PROFIL GÓRNY SZYBY
UPPER GLASS PROFILE



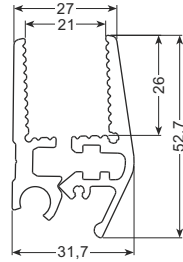
 anodowane aluminium
anodized aluminium

ZAWIAS SZYBY FRONTOWEJ
(do szyby zespolonej 18 mm)
HINGE FOR FRONT GLASS
(for 18 mm double glass)

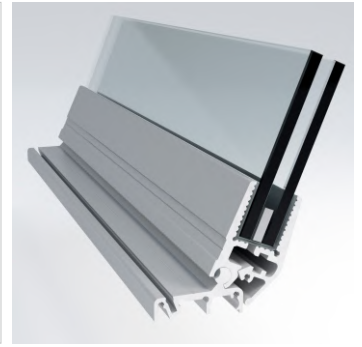
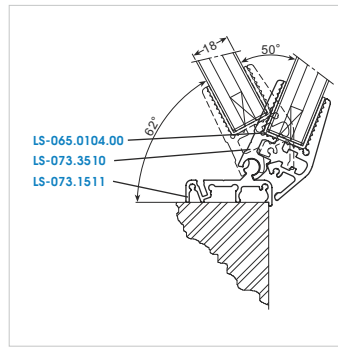


anodowane aluminium
anodized aluminium

LS-073.3510



DŁUGOŚĆ/LENGTH 5.2 m

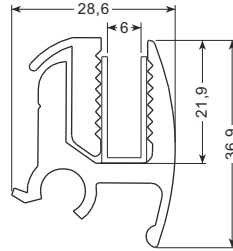


ZAWIAS SZYBY FRONTOWEJ
(do szyby pojedynczej 6 mm)
HINGE FOR FRONT GLASS
(for 6 mm single glass)

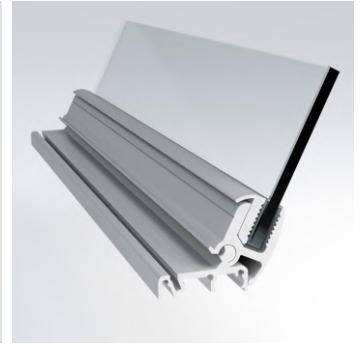
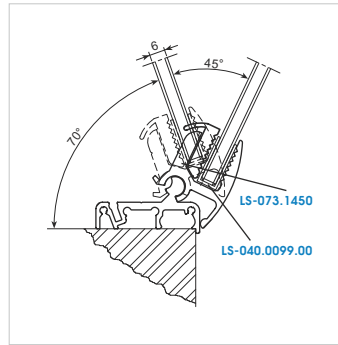


anodowane aluminium
anodized aluminium

LS-073.1450



DŁUGOŚĆ/LENGTH 5.2 m

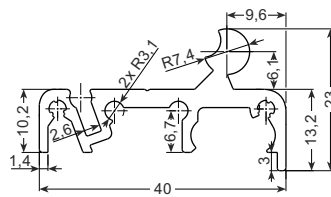


PROFIL DOLNY ZAWIASU
TILT BASE PROFILE

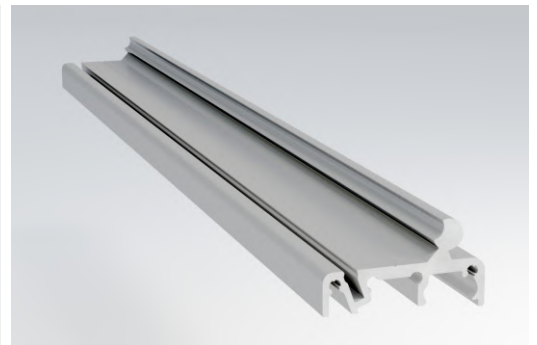


anodowane aluminium
anodized aluminium

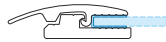
LS-073.1511



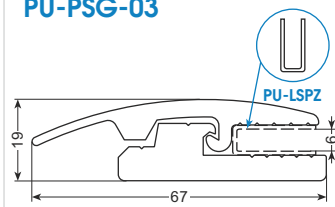
DŁUGOŚĆ/LENGTH 5.2 m



PROFIL GÓRNY SZYBY
UPPER GLASS PROFILE

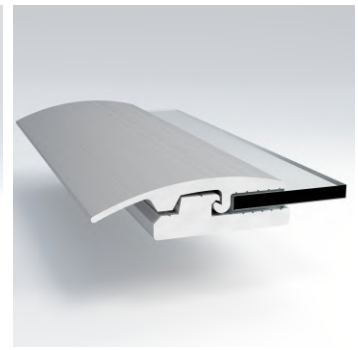
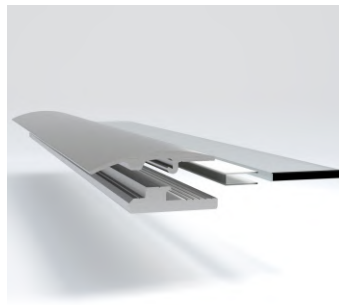


PU-PSG-03



*USZCZELKA
NIE JEST DOŁĄCZONA
*GASKET NOT INCLUDED
DŁUGOŚĆ/LENGTH 3 m

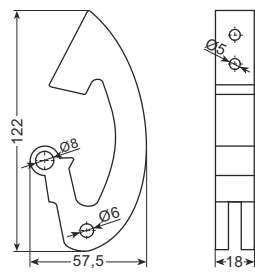
 anodowane aluminium
anodized aluminium




**ZAWIAS DO SYSTEMU
PODNOŻENIA SZYB**
HINGE FOR LIFT-UP SYSTEM



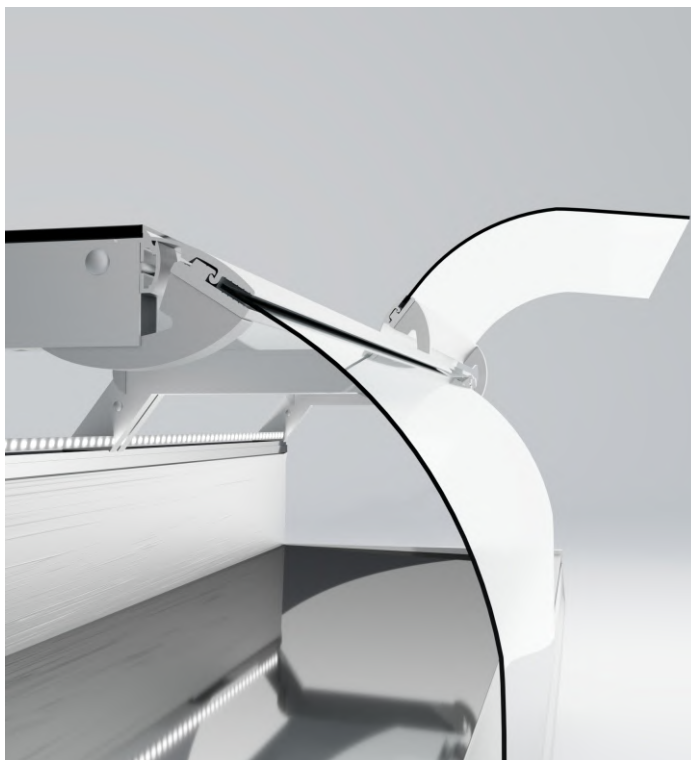
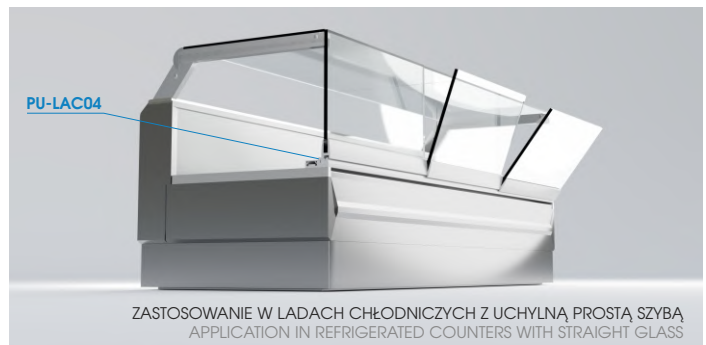
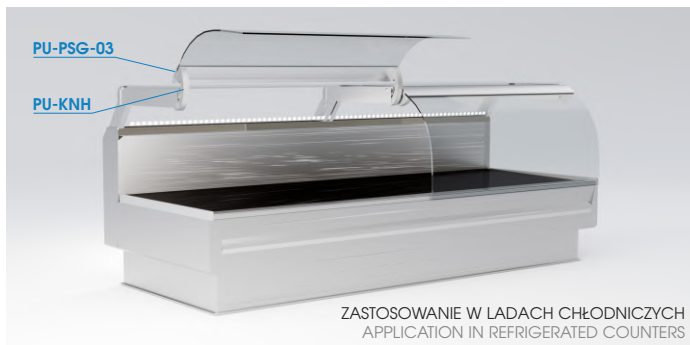
PU-KNH

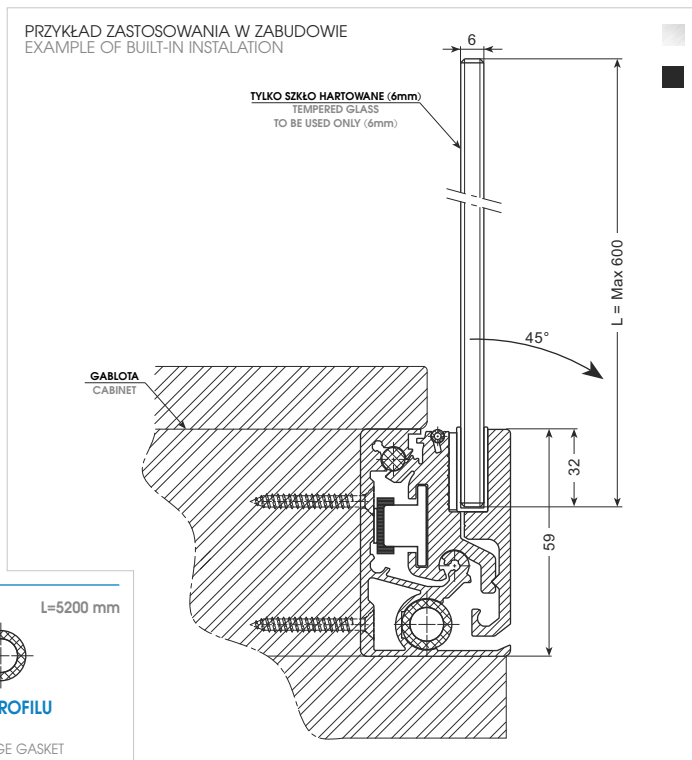
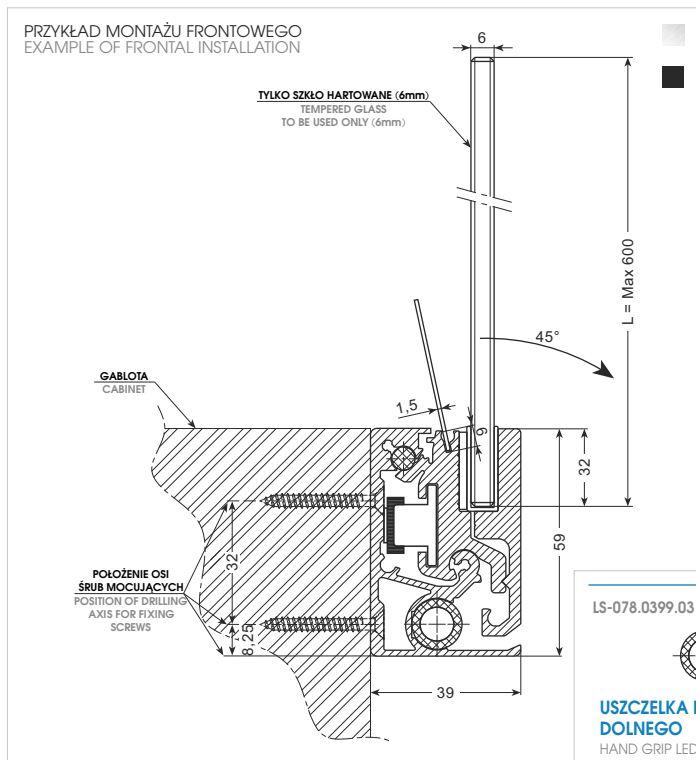
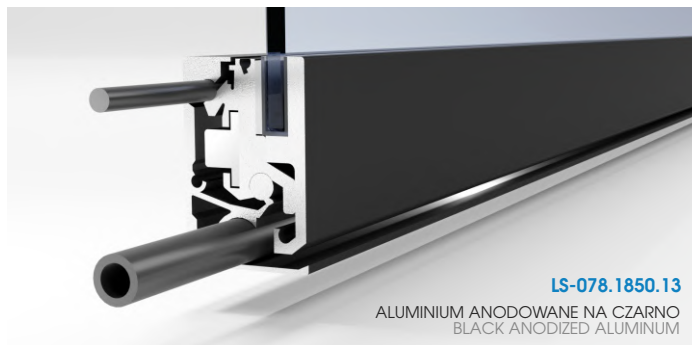


 aluminium
aluminium



PRZYKŁAD ZASTOSOWANIA
APPLICATION EXAMPLE



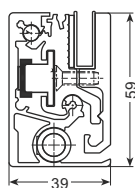


SPEC. SZKŁA
GLASS SPEC.

GRUBOŚĆ SZKŁA
GLASS THICKNESS
6 mm

MAKS. WYSOKOŚĆ SZKŁA
MAXIMUM GLASS HEIGHT
600 mm

LS-078.1850(silver) L=5200 mm
LS-078.1850.13(black) L=5200 mm



**KOMPLETNY PROFIL
GÓRNY/DOLNY SZYBY**
COMPLETE SYSTEM BASE/HAND
GRIP

LS-112.0199.00 L=50 m



USZCZELKA
FRONT LOCK GASKET

LS-071.0099.00 L=5200 mm



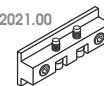
DRAŻEK BLOKUJĄCY
LOCKING ROD

LS-043.0300.00 L=5200 mm



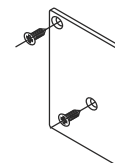
USZCZELKA
GASKET

LS-078.2021.00



**ZESTAW DO REGULACJI
ZAMKNIĘCIA**
LOCK ADJUSTING KIT

LS-078.1534(silver) PR/RT
LS-078.1534.13(black) PR/RT
LS-078.1535(silver) LW/LT
LS-078.1535.13(black) LW/LT

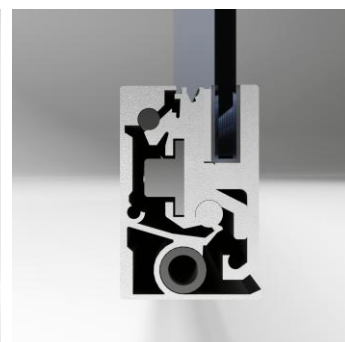


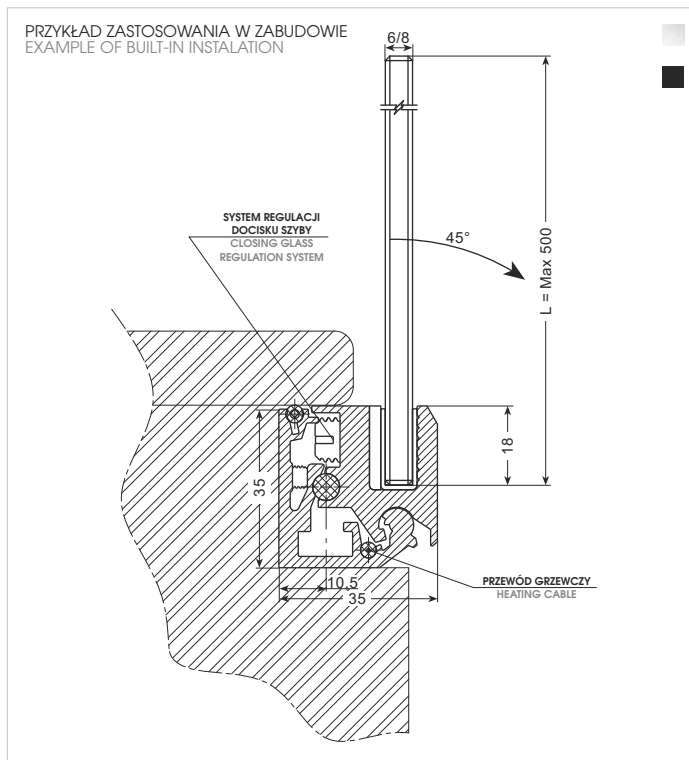
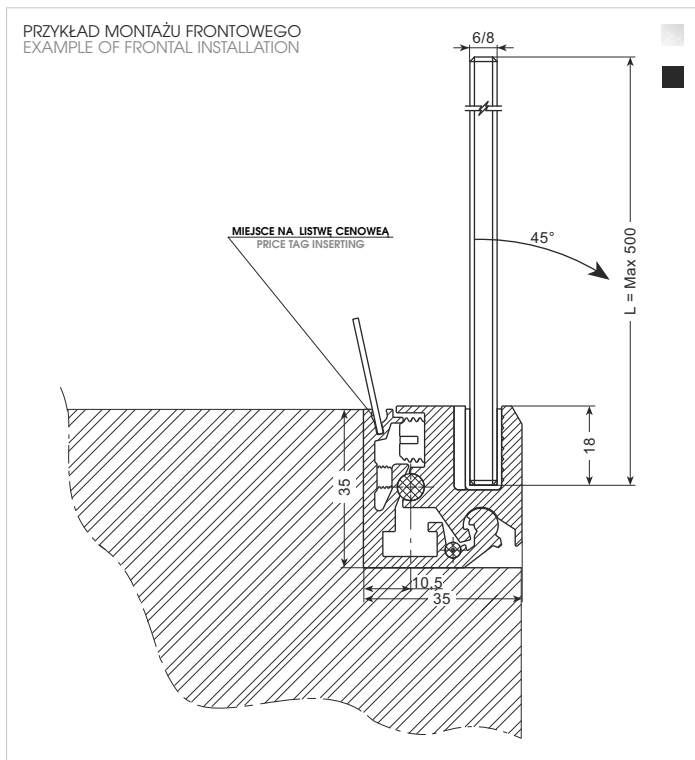
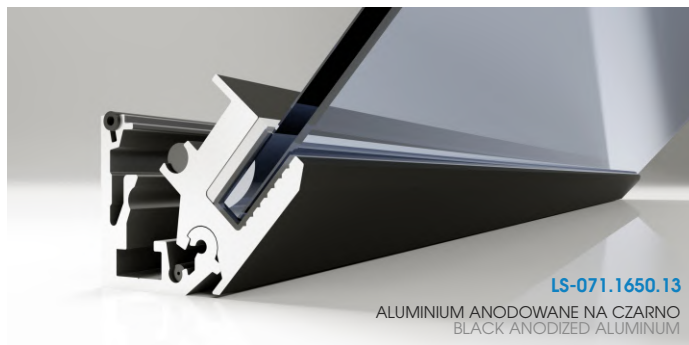
**KOMPLETNA ZAŚLEPKA
ZE ŚRUBAMI**
FRONT LOCK GASKET

Cechy systemu / System features LS-078

- Minimalistyczny design dający szeroką przestrzeń dla szyby
- Proste otwarcie bez konieczności podtrzymywania szyby
- Całkowite otwarcie szyby wynosi 45° (najszersze w swojej kategorii)
- Utrzymywanie pionowej pozycji szkła (90°) bez konieczności stosowania systemu śrub lub nieporęcznych uchwytnów
- Wyposażony w gniazdo cenowe na całej długości dolnego profilu

- Minimal esthetic that gives a wide space to the glass component
- Easy opening without the need to support the glass
- The total opening of the system is 45° wide, the widest of its category
- Possibility to keep a 90° fitted vertical position of glass avoiding any screwing system or bulky brackets on the top of glass
- Equipped with price tag seat all along the base profile





SPEC. SZKŁA
GLASS SPEC.

LS-071.1650.00 L=5200 mm

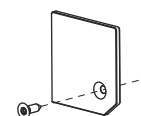
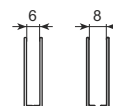
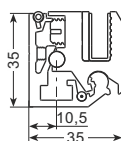
LS-112.0199.00 L=50 m

LS-040.0099.00 L=100 m
LS-078.0299.00 L=50 m

LS-071.1524.00 PRAWY/RIGHT
LS-071.1523.00 LEWY/LEFT

GRUBOŚĆ SZKŁA
GLASS THICKNESS
6/8 mm

MAKS. WYSOKOŚĆ SZKŁA
MAXIMUM GLASS HEIGHT
500 mm



**KOMPLETNY PROFIL
GÓRNY/DOLNY SZYBY**
COMPLETE SYSTEM BASE/HAND GRIP

**USZCZELKA
FRONT LOCK GASKET**

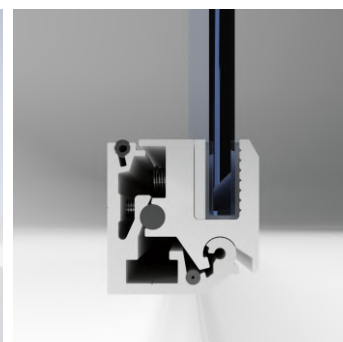
**USZCZELKA
GASKET**

**KOMPLETNA ZAŚLEPKA
ZE ŚRUBAMI**
FRONT LOCK GASKET

Cechy systemu / System features LS-071

- Najmniejszy system (35x35 mm) uchylanych szyb prostych do szkła 6/8 mm
- Wyposażony w system regulacji siły i kąta zamykania
- Proste otwarcie bez konieczności podtrzymywania szyby
- Profil dolny wyposażony w cennik oraz gniazdo grzałki w celu zmniejszenia problemów związanych z kondensacją
- Mocowanie na blacie mebla lub w dedykowanej zabudowie

- The smallest solution for tilt forward opening systems with reduced section of 35x35 mm, for 6/8 mm glass
- Equipped with closing system with adjustable closing strength and angle
- Easy opening without the need to support the glass
- The base profile is predisposed with a price tag housing and with a seat for adding heating wire to warm up and reduce condensation problems
- Fixed directly on the top of the furniture surface or in the dedicated housing



WSPORNIK PRZEDNI / FRONT UPRIGHT

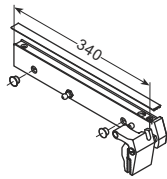


LS-080.0015 (silver)
LS-080.0015.13 (black)



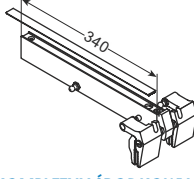
KOMPLETNA TYLNA ZAŚLEPKA ZE ŚRUBAMI
KIT COMPLETE REAR END CAP CASE WITH SCREWS

LS-080.1400



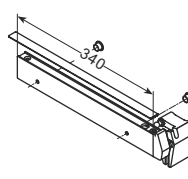
KOMPLETNY PRAWY ZAWIAS BEZ SPRĘŻYNY GAZOWEJ
COMPLETE RIGHT CASE WITHOUT GAS SPRING

LS-080.1410



KOMPLETNY ŚRODKOWY ZAWIAS BEZ SPRĘŻYNY GAZOWEJ
COMPLETE CENTRAL CASE WITHOUT GAS SPRING

LS-080.1401



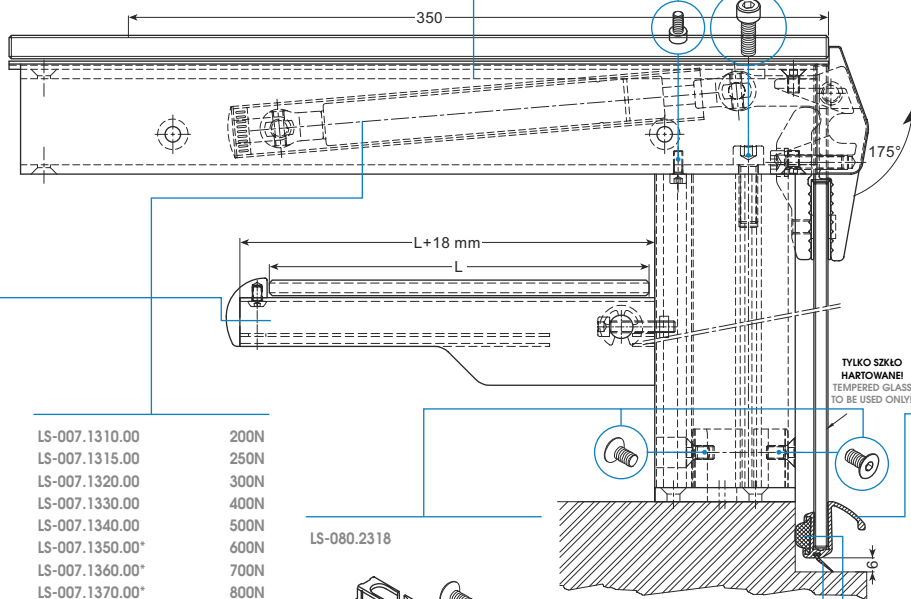
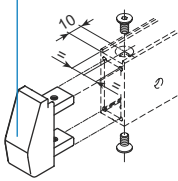
KOMPLETNY LEWY ZAWIAS BEZ SPRĘŻYNY GAZOWEJ
COMPLETE LEFT CASE WITHOUT GAS SPRING

LS-001.0521.00

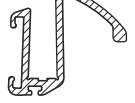


ZESTAW DO MONTAŻU W POZYCJI PIONOWEJ
KIT SMALL PARTS FOR FIXING CASE TO UPRIGHT

OPCJONALNIE
OPTIONAL

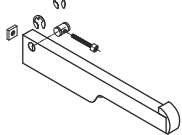


LS-080.1100(silver) L=5150 mm
LS-080.1100.13(black) L=5150 mm



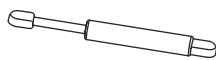
PROFIL DOLNY SZYBY
LOCK UPRIGHT GASKET

LS-067.1970 L=195 mm
LS-067.1971 L=245 mm
LS-067.1275 L=295 mm
LS-067.1276 L=345 mm
LS-067.1277 L=395 mm
LS-067.1278 L=445 mm



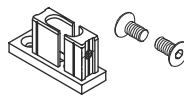
KOMPLETNA PÓLKA
COMPLETE SHELF

LS-007.1310.00 200N
LS-007.1315.00 250N
LS-007.1320.00 300N
LS-007.1330.00 400N
LS-007.1340.00 500N
LS-007.1350.00* 600N
LS-007.1360.00* 700N
LS-007.1370.00* 800N



SPRĘŻYNA GAZOWA
GAS SPRING
*Z CZARNYM, STAŁOWYM ZATRZASKIEM
*WITH BLACK, STEEL STRIKE

LS-080.2318



ZESTAW DO PRZEDNIEGO WSPORNIKA LS-080.0007
KIT COMPLETE PLATE FOR LS-080.0007 FRONT UPRIGHT

LS-080.0007(silver) L=5000 mm
LS-080.0007.13(black)
PROFIL PRZEDNI PIONOWY
FRONT UPRIGHT PROFILE

LS-151.0107.11 L=100 m
LS-550.0099.00 L=100 m



USZCZELKA PROFILU DOLNEGO
HAND GRIP
LEDGE GASKET



DOLNA USZCZELKA
LOWER LOCK GASKET

Cechy systemu / System features LS-080

- System podnoszenia szyb prostych o grubości szkła 6 mm
- Dostępny ze wspornikami tylnymi lub przednimi
- Minimalistyczny wygląd przestrzeni wystawowej dzięki małym zawiasom
- Możliwość montażu w naroża otwarte, zamknięte, kuliste i sektorowe
- Na zapytanie dostępne półki pośrednie
- Wyposażone w sprawdzone w wysokich temperaturach siłowniki gazowe
- Lift-up system for linear glass thickness 6 mm.
- Rear or front uprights available
- The display shows a minimalist look thanks to the small hinges
- Possibility fitted into open, closed, spherical and sector corners
- Intermediate shelves available on request
- Fitted with high temperatures tested gas-rams



WSPORNIK TYLNY / REAR UPRIGHT



ALUMINIUM ANODOWANE NA SREBRNY
SILVER ANODIZED ALUMINIUM



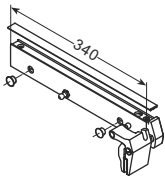
ALUMINIUM ANODOWANE NA CZARNO
BLACK ANODIZED ALUMINIUM

LS-080.0015 (silver)
LS-080.0015.13 (black)



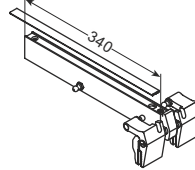
**KOMPLETNA TYLNA
ZASLEPKA ZE ŚRUBAMI**
KIT COMPLETE REAR END CAP
CASE WITH SCREWS

LS-080.1400



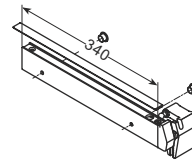
**KOMPLETNY PRAWY ZAWIAS
BEZ SPRĘŻYNY GAZOWEJ**
COMPLETE RIGHT CASE WITHOUT
GAS SPRING

LS-080.1410



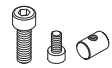
**KOMPLETNY ŚRODKOWY
ZAWIAS BEZ SPRĘŻYNY
GAZOWEJ**
COMPLETE CENTRAL CASE
WITHOUT GAS SPRING

LS-080.1401



**KOMPLETNY LEWY ZAWIAS
BEZ SPRĘŻYNY GAZOWEJ**
COMPLETE LEFT CASE WITHOUT
GAS SPRING

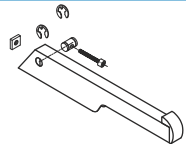
LS-001.0522.00



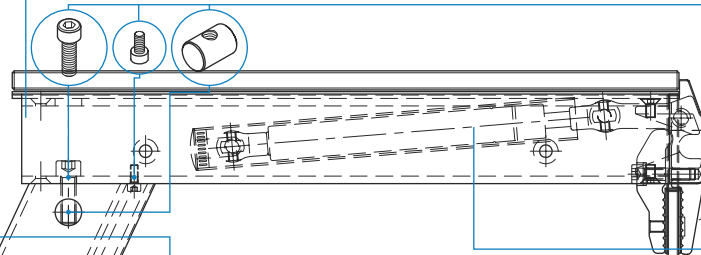
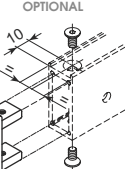
**ZESTAW DO MONTAŻU
W POZYCJI PIONOWEJ**
KIT SMALL PARTS FOR FIXING CASE
TO UPRIGHT

KOMPLETNA PÓŁKA
COMPLETE SHELF

*WEDŁUG SPECYFIKACJI KLIENTA
*ACCORDING TO CUSTOMER
SPECIFICATIONS

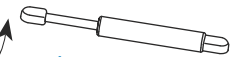


OPCJONALNIE
OPTIONAL

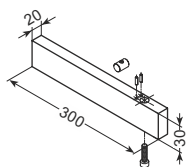


- LS-007.1310.00 200N
- LS-007.1315.00 250N
- LS-007.1320.00 300N
- LS-007.1330.00 400N
- LS-007.1340.00 500N
- LS-007.1350.00* 600N
- LS-007.1360.00* 700N
- LS-007.1370.00* 800N

SPRĘŻYNA GAZOWA
GAS SPRING



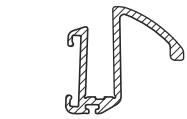
LS-080.2318



**ZESTAW DO TYLNEGO
WSPORNIKA LS-068.0007**
KIT COMPLETE PLATE FOR
LS-068.0007 REAR UPRIGHT

KLIENT MUSI SPRECYZOWAĆ PARAMETRY
TYLNEGO PROFILU MONTAŻOWEGO (KĄT, WYSOKOŚĆ) WIĘCEJ W LS-080 (KATALOG CZ. 5)
THE CUSTOMER NEEDS TO TAKE CARE OF PROCESSINGS
FOR REAR UPRIGHT FIXING (ANGLE, HEIGHT) MORE INFORMATION IN LS-080 (CATALOGUE PART 5)

- LS-080.1100(silver) L=5150 mm
- LS-080.1100.13(black) L=5150 mm



PROFIL DOLNY SZYBY
LOCK UPRIGHT GASKET

LS-090.1199.00

L=100 m

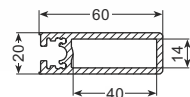
LS-068.0007

L=5000 mm



USZCZELKA
LOCK UPRIGHT GASKET

PROFIL TYLNY PIONOWY
REAR UPRIGHT PROFILE



- LS-151.0107.11 L=100 m
- LS-550.0099.00 L=100 m

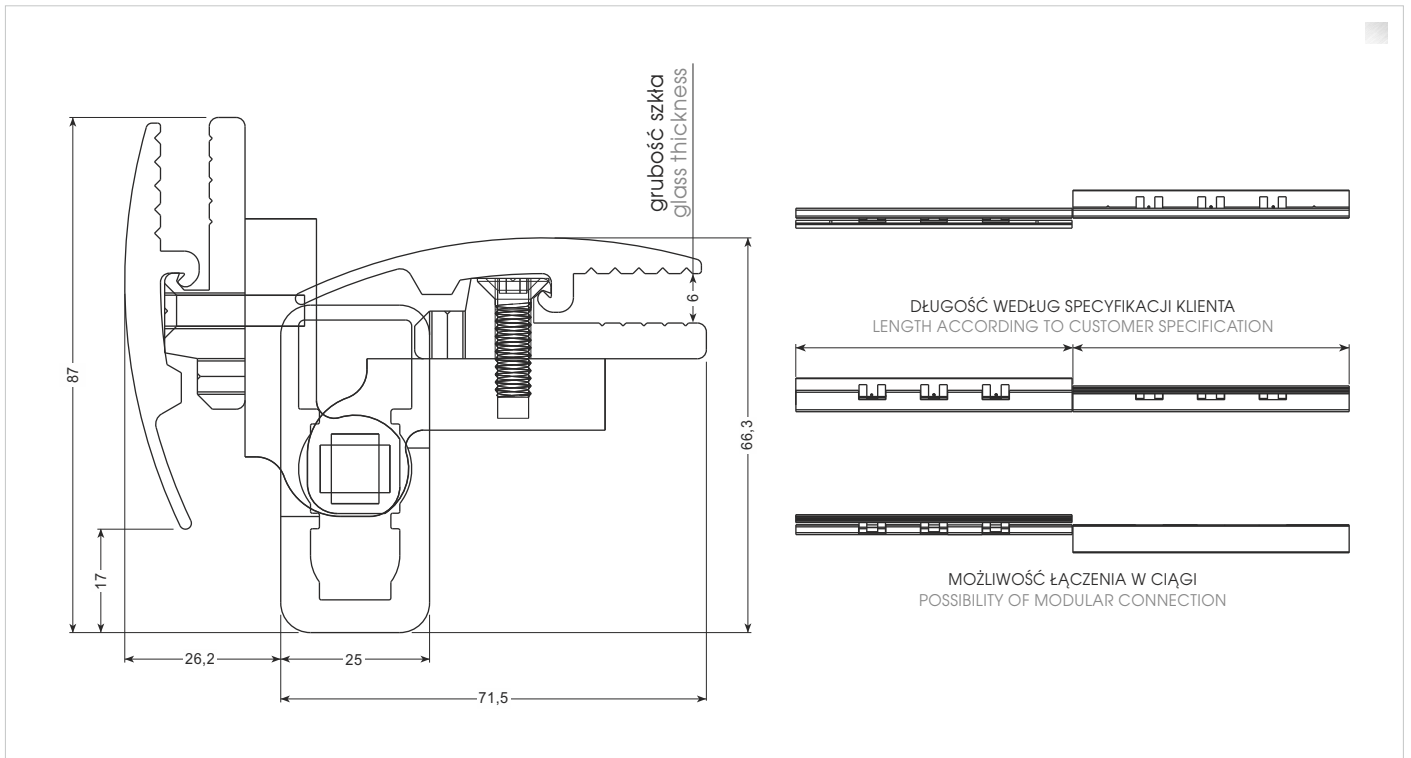
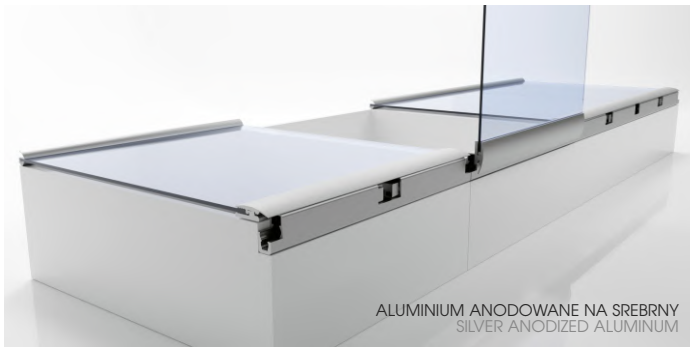


**USZCZELKA
PROFILU
DOLNEGO**
HAND GRIP
LEDGE GASKET



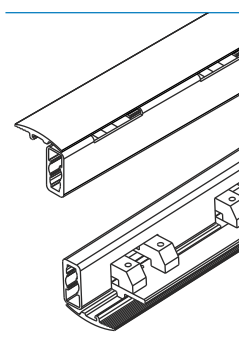
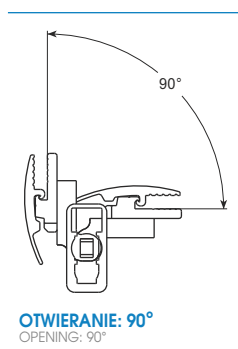
**DOLNA
USZCZELKA**
LOWER LOCK
GASKET





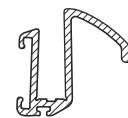
**SPEC. SZKŁA
GLASS SPEC.**

GRUBOŚĆ SZKŁA
GLASS THICKNESS
6 mm



OPCJONALNIE / OPTIONAL

LS-080.1100 L=5150 mm



**PROFIL DOLNY SZYBY
LOCK UPRIGHT GASKET**

OPCJONALNIE / OPTIONAL

LS-151.0107.11 L=100 m LS-550.0099.00 L=100 m



**USZCZELKA
PROFILU
DOLNEGO
HAND GRIP
LEDGE GASKET**

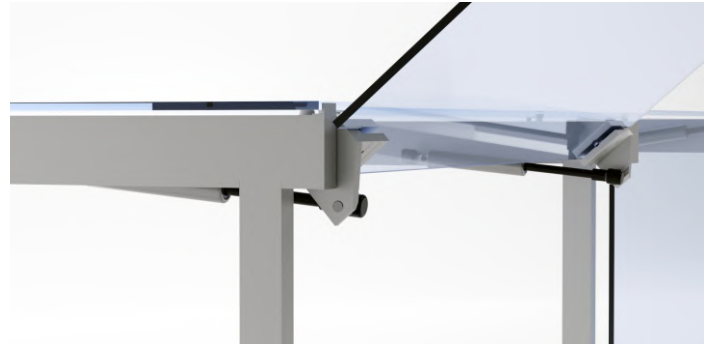
**DOLNA
USZCZELKA
LOWER LOCK
GASKET**

Cechy systemu / System features LS-S710

- System podnoszenia szyb prostych o grubości szkła 6 mm
- Idealne rozwiązanie do ciągów wydawczych gdzie zasadniczą kwestią jest świeżość pokarmów i zachowanie odpowiedniej temperatury
- Możliwość łączenia w ciągi
- Całkowite otwarcie szyby wynosi 90°
- Na zapytanie wykończenie - aluminium anodowane na kolor czarny
- Lift-up system for linear glass thickness 6 mm
- Ideal solution for serving lines where freshness of food and maintaining the right temperature is essential
- Possibility of modular connection
- The total opening of the system is 90°
- Black anodized aluminium finish on request



WSPORNIK PRZEDNI / FRONT UPRIGHT



LS-Q80.RH

KOMPLETNY PRAWY ZAWIAS BEZ SPRĘŻYNY GAZOWEJ
COMPLETE RIGHT CASE WITHOUT GAS SPRING

LS-Q80.CH

KOMPLETNY ŚRODKOWY ZAWIAS BEZ SPRĘŻYNY GAZOWEJ
COMPLETE CENTRAL CASE WITHOUT GAS SPRING

LS-Q80.LH

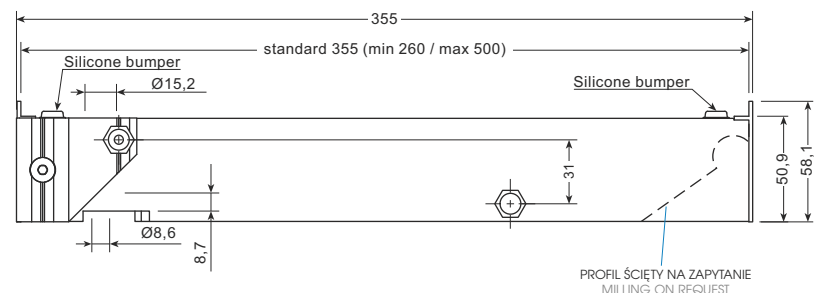
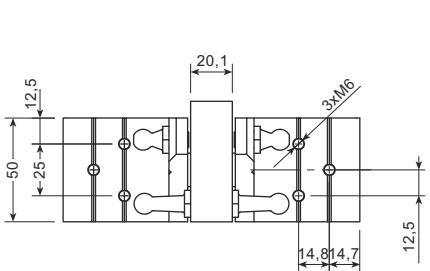
KOMPLETNY LEWY ZAWIAS BEZ SPRĘŻYNY GAZOWEJ
COMPLETE LEFT CASE WITHOUT GAS SPRING

LS-Q80.PA

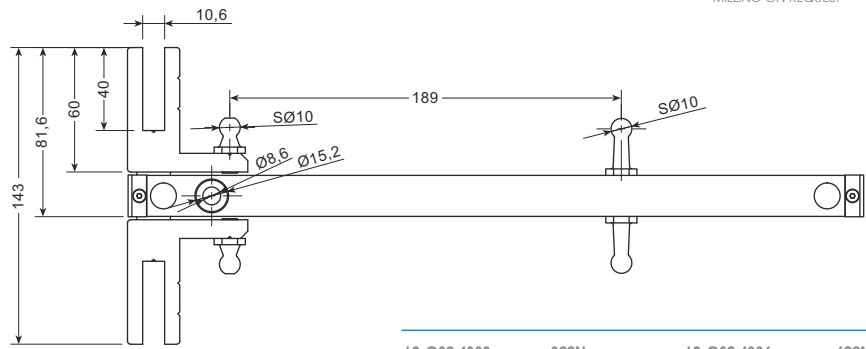
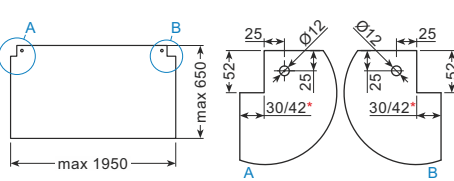
PROFIL PRZEDNI PIONOWY
FRONT UPRIGHT PROFILE

LS-Q80.PB

PROFIL PRZEDNI PIONOWY
FRONT UPRIGHT PROFILE



TYLKO SZKŁO HARTOWANE! / TEMPERED GLASS TO BE USED ONLY

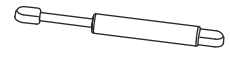


WYCIĘCIE SZKŁA
GLASS CUTTING

*Wycięcie dla zawiasu zewnętrznego: 42 mm
*Wycięcie dla zawiasu środkowego: 30 mm
Maks. grubość szkła: 6 mm
*Cut for external hinge: 42 mm
*Cut for central hinge: 30 mm
Max. glass thickness: 6 mm

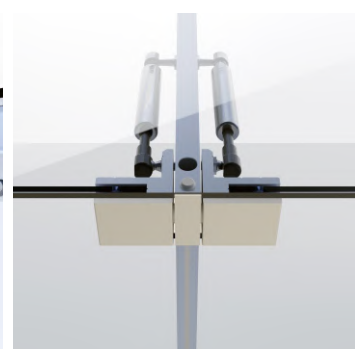
| | | | |
|-------------|------|-------------|------|
| LS-Q80.4333 | 300N | LS-Q80.4336 | 600N |
| LS-Q80.4334 | 400N | LS-Q80.4337 | 700N |
| LS-Q80.4335 | 500N | LS-Q80.4338 | 800N |

SPRĘŻYNA GAZOWA
GAS SPRING



Cechy systemu / System features LS-Q80

- System podnoszenia szyb prostych o grubości szkła 6 mm
 - Na zapytanie ze wspornikami tylnymi
 - Minimalistyczny wygląd przestrzeni wystawowej dzięki małym zawiasom
 - Możliwość montażu w naroża otwarte, zamknięte, kuliste i sektorowe
 - Wykończenie: aluminium anodowane (na zapytanie anoda czarna)
 - Wyposażone w sprawdzone w wysokich temperaturach siłowniki gazowe
- Lift-up system for linear glass thickness 6 mm.
 - Rear uprights available on request
 - The display shows a minimalist look thanks to the small hinges
 - Possibility fitted into open, closed, spherical and corners
 - Finishing: anodized aluminum (black anode on request)
 - Fitted with high temperatures tested gas-rams



PR-SI

PR-SI-26050 PR-SI-26049



ZAKOŃCZENIE
END CAP

PR-SI-26010



SZYNA GÓRNA
UPPER RAIL

PR-SI-26070



PROWADZENIE SZKŁA GÓRNE
UPPER GLASS SILENCER

PR-SI-26060



USZCZELKA DOLNA
BOTTOM GASKET

PR-SI-09420 PR-SI-09423
PR-SI-09424



ZAMEK
LOCK

PR-SI-26040



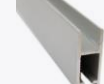
ROLKA
TROLLEY

PR-SI-26030

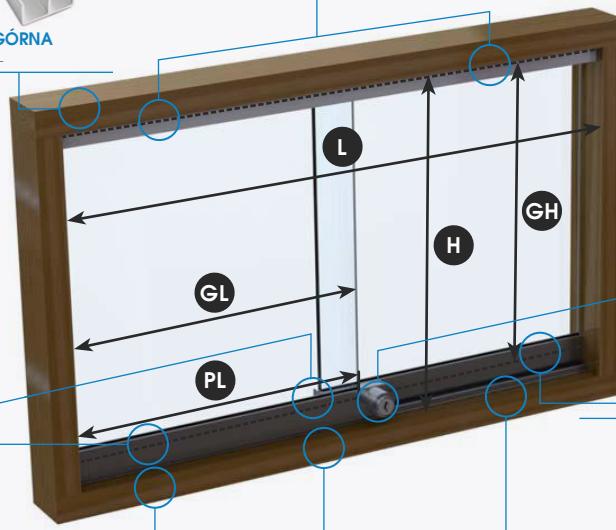


SZYNA DOLNA
BOTTOM RAIL

PR-SI-26020



PROFIL SZYBY
GLASS PROFILE



JAK PRZYGOTOWAĆ WYMIARY SZKŁA? / HOW TO PREPARE DIMENSIONS OF GLASS??

1. SZEROKOŚĆ SZKŁA
GLASS WIDTH
GL

$$GL = ((L + 30 \text{ mm}) \times 0,5) - 3 \text{ mm}$$

SZEROKOŚĆ DRZWI
GLASS-DOOR WIDTH

ZAŚLEPKI
END CAPS

2. WYSOKOŚĆ SZKŁA
GLASS HEIGHT
GH

$$GH = H - 29 \text{ mm}$$

ŚWIATŁO DRZWI
GLASS-DOORS VISIBLE LIGHT

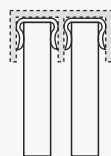
3. DŁUGOŚĆ PROFILU SZYBY
GLASS PROFILE LENGTH
PL

$$PL = GL + 2 \text{ mm}$$

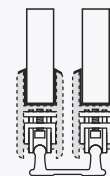
SZEROKOŚĆ SKRZYDŁA
DOOR WING WIDTH

ZAŚLEPKI
END CAPS

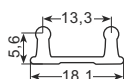
SZYNA GÓRNA / UPPER RAIL



SZYNA DOLNA / BOTTOM RAIL



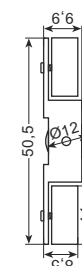
PR-SI-26030



SZYNA DOLNA
BOTTOM RAIL

- wykonana z anodowanego aluminium
- długość: 2 m
- made of anodized aluminium
- length: 2 m

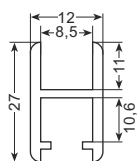
PR-SI-26040



ROLKA
TROLLEY

- wykonana ze stali nikielowanej
- nylonowe kółko
- obciążenie: 3 kg na rolę
- made of nickel plated steel
- wheel made of nylon
- loading: 3 kg per trolley

PR-SI-26020



**PROFIL SZYBY
GLASS PROFILE**

- wykonany z anodowanego aluminium
- przeznaczony do szkła o grubości 5 mm
- długość: 2 m
- made of anodized aluminium
- using for glass thickness 5 mm
- length: 2 m

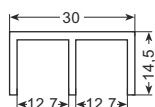
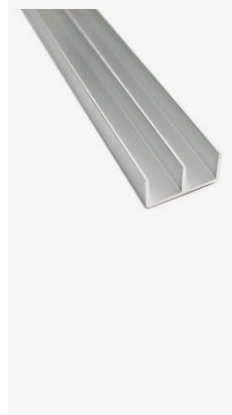
PR-SI-26060



**USZCZELKA DOLNA
BOTTOM GASKET**

- wykonana z szarego PCV
- długość (szpula): 100 m
- made of grey PVC
- length (reel): 100 m

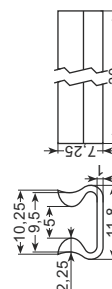
PR-SI-26010



**SZYNA GÓRNA
UPPER RAIL**

- wykonana z anodowanego aluminium
- długość: 2 m
- made of anodized aluminium
- length: 2 m

PR-SI-26070

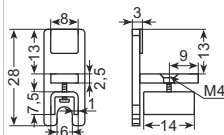


**PROWADZENIE SZKŁA GÓRNE
UPPER GLASS SILENCER**

- wykonane z przezroczystego PCV
- made of transparent PVC

PR-SI-26050

chrom / chromed

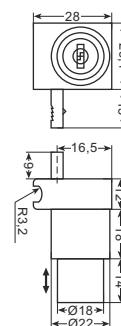


**ZAKOŃCZENIE
END CAP**

- wykonane ze stopu ZnAl
- made of zamak

PR-SI-09420

chrom / chromed

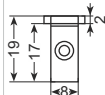


**ZAMEK
LOCK**

- montowany na profilu szyby PR-SI-26020
- PR-SI-09420, PR-SI-09423 - zamki z różnymi kluczami
- PR-SI-09424D - uniwersalny klucz

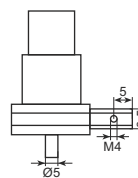
PR-SI-26049

satyna / satin



PR-SI-09423

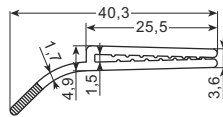
satyna / satin



- mounted on PR-SI-26020 glass profile
- PR-SI-09420, PR-SI-09423 locks with different keys
- PR-SI-09424D - universal key

**PROFIL
PROFILE**

PU-S42

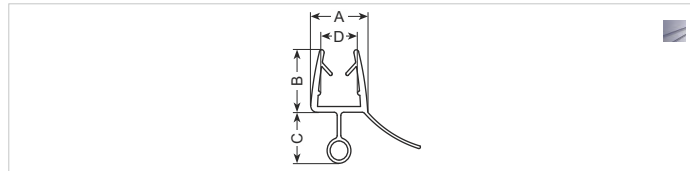


■ twarde i miękkie PCV (czarny)
rigid and soft PVC (black)

DŁUGOŚĆ/LENGTH 3 m

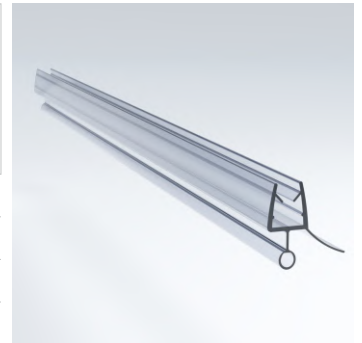


**USZCZELKA SZYBY
GLASS GASKET**

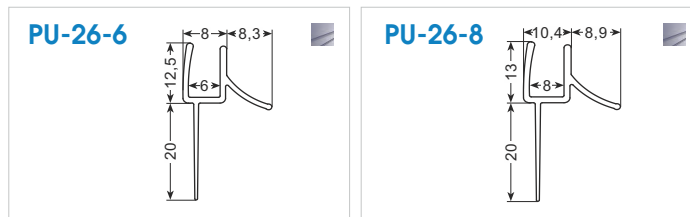


■ twarde i miękkie PCV
(przezroczysty)
rigid and soft PVC
(transparentny)

| SYMBOL | PU-16-6 | PU-16-8 | PU-16-10 |
|-----------------------|-----------------------------------|-----------------------------------|--|
| WYMIARY DIMENSIONS | A 9,4 mm B 10 mm C 8 mm D 6 mm | A 11 mm B 12 mm C 10 mm D 8 mm | A 13,5 mm B 12,7 mm C 10 mm D 10 mm |
| DO SZKŁA FOR GLASS | 6 mm | 8 mm | 10 mm |
| DŁUGOŚĆ LENGTH | 2,2 m | 2,5 m | 2,5 m |



**USZCZELKA SZYBY
GLASS GASKET**

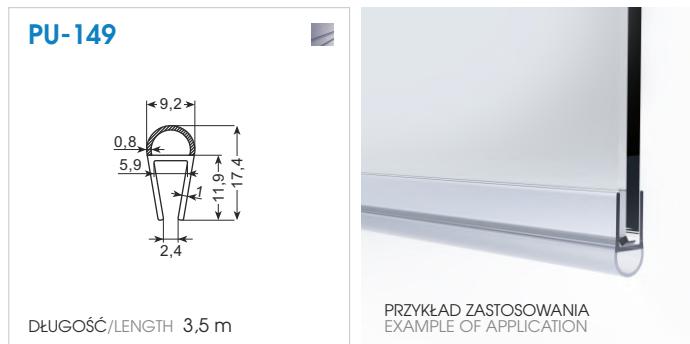


■ twarde i miękkie PCV
(przezroczysty)
rigid and soft PVC
(transparentny)

| SYMBOL | PU-26-6 | PU-26-8 |
|-----------------------|---------|---------|
| DO SZKŁA FOR GLASS | 6 mm | 8 mm |
| DŁUGOŚĆ LENGTH | 2,2 m | 2,5 m |



**USZCZELKA SZYBY
GLASS GASKET**



■ twarde i miękkie PCV
(przezroczysty)
rigid and soft PVC
(transparentny)

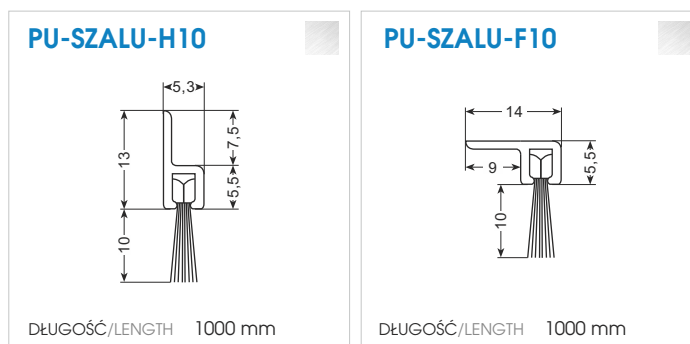
DŁUGOŚĆ/LENGTH 3,5 m



PRZYKŁAD ZASTOSOWANIA
EXAMPLE OF APPLICATION



**SZCZOTKA
USZCZELNIAJĄCA
SEAL BRUSH**



■ aluminium
aluminium

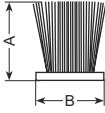
DŁUGOŚĆ/LENGTH 1000 mm

DŁUGOŚĆ/LENGTH 1000 mm



**SZCZOTKA
USZCZELNIAJĄCA
SEAL BRUSH**

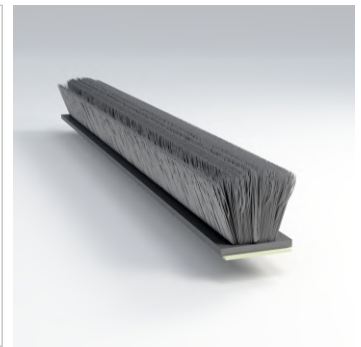
■ twarde PCV (szary)
rigid PVC (grey)



PU-SZM6 A 6 mm B 4,8 mm
PU-SZD12 A 12 mm B 4,8 mm

SAMOPRZYLEPNA/ADHESIVE

PU-SZMK4 A 4 mm B 4,8 mm
PU-SZMK6 A 6 mm B 4,8 mm
PU-SZDK12 A 12 mm B 6,7 mm

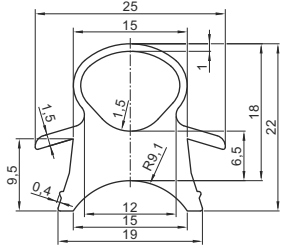
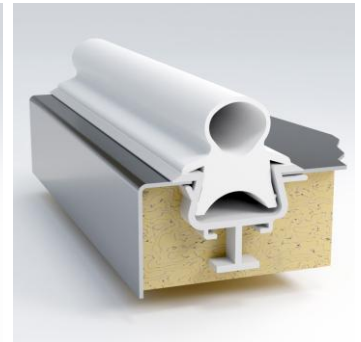


**USZCZELKA
GASKET**



□ MQV

PU-OMG2 □

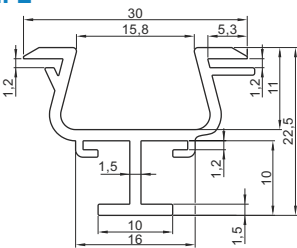



**PROFIL
PROFILE**

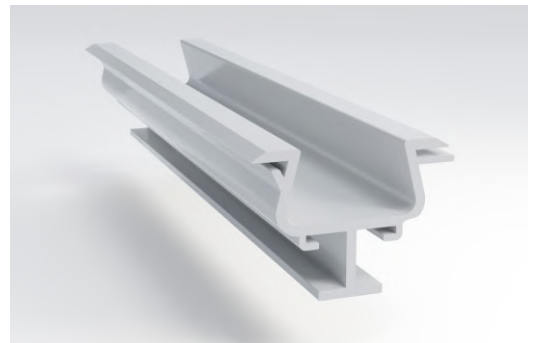


□ PCV (biały)
PVC (white)

PU-OMP2 □



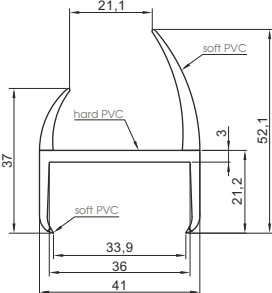
DŁUGOŚĆ/LENGTH 3,2 m



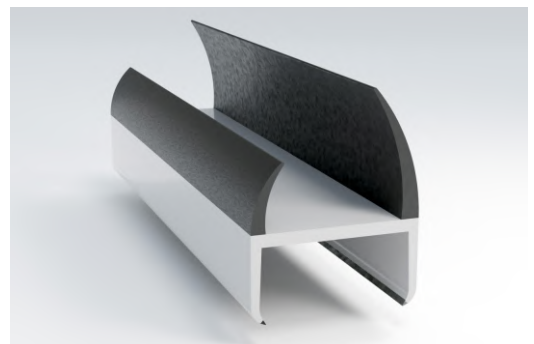
**PROFIL DRZWIOWY
DO ZABUDÓW
MOBILNYCH TYPU IZOTERMA,
KONTENER, CHŁODNIA
DOOR PROFILE FOR VEHICLE
CONSTRUCTIONS SUCH AS
ISOTHERMAL, CONTAINERS,
REFRIGERATED VANS**

□ miękkie PCV (biały)
soft PVC (white)
■ twarde PCV (czarny)
hard PVC (black)

PU-MF35 □ ■



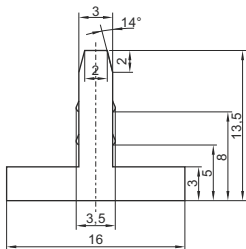
DO DRZWI O GRUBOŚCI/FOR DOOR THICKNESS 34-36 mm
DŁUGOŚĆ/LENGTH max 6,0 m



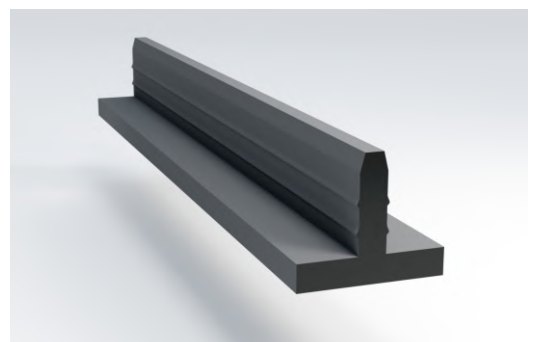
**USZCZELKA
GASKET**

■ TPE (czarny)
TPE (black)

PU-TB ■



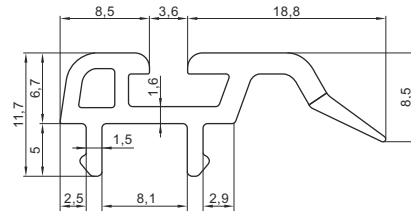
DŁUGOŚĆ/LENGTH 100 m
inna długość na zapytanie / other length on request



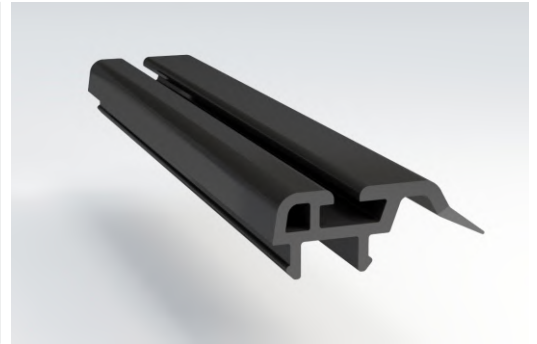
PROFIL BAZOWY USZCZELKI
BASE PROFILE FOR GASKET

■ PCV (czarny)
PVC (black)

PU-BD



DŁUGOŚĆ/LENGTH 2,0 m

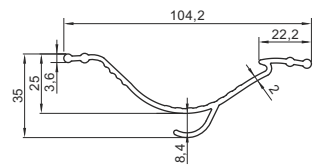


PU-CL105
PROFIL WENTYLACYJNY
PRZEPUSTNICY
THROTTLE VENTILATION PROFILE

KP-CL105
UCHWYT PROFILU
PROFILE HOLDER

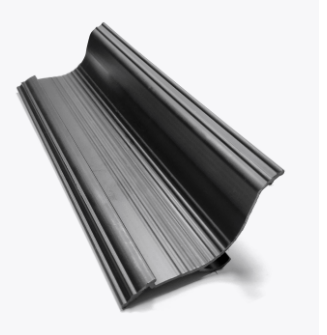
■ PP (czarny) + 20% Talk
PP (black) + 20% Talc

PU-CL105



DŁUGOŚĆ/LENGTH 6,0 m

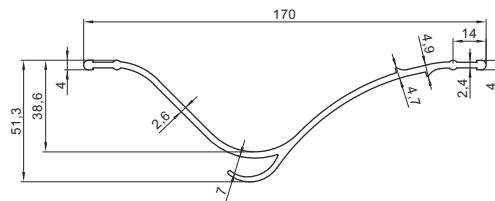
KP-CL105



PU-CL170
PROFIL WENTYLACYJNY
PRZEPUSTNICY
THROTTLE VENTILATION PROFILE

■ PP (czarny) + 20% Talk
PP (black) + 20% Talc

PU-CL170



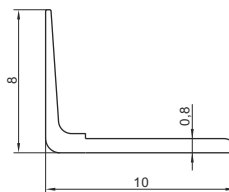
DŁUGOŚĆ/LENGTH 1,5 m



PROFIL Z TAŚMĄ
DWUSTRONNĄ
PROFILE WITH
DOUBLE SIDED TAPE

■ Co-Ex, przezroczysty PCV
i miękki PCV
■ Co-Ex, transparent PVC
and soft PVC

PU-7-10T



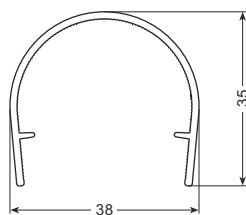
DŁUGOŚĆ/LENGTH 2 m



PROFIL OSŁONY ŚWIETŁÓWKI
LAMP COVER PROFILE

■ przezroczysty PMMA
transparent PMMA

PU-AP221



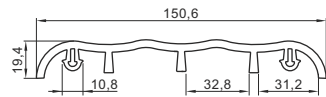
DŁUGOŚĆ/LENGTH 2-6 m



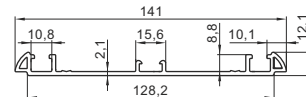
**ODBOJNIK
BUMPER**



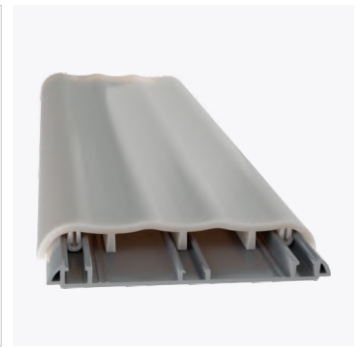
PS-BP150



PS-BP150M



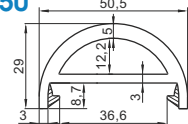
- twarde PCV (szary)
- rigid PVC (grey)
- miękkie PCV (szary)
- soft PVC (grey)



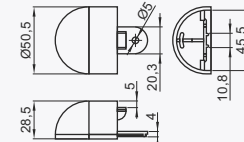
**ODBOJNIK
BUMPER**



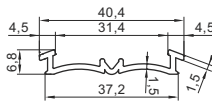
PS-BUP50



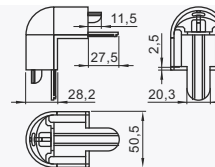
PS-BUP50C



PS-BUP50M



PS-BUP50E



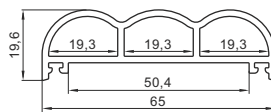
- PVC CO-EX (szary/grey)



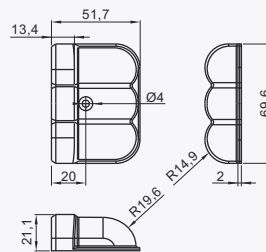
**ODBOJNIK
BUMPER**



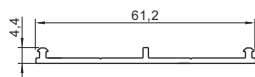
PS-BP65



PS-PB65C



PS-BP65M



- szary PCV (miękki i twardy)
- grey PVC (soft and rigid)





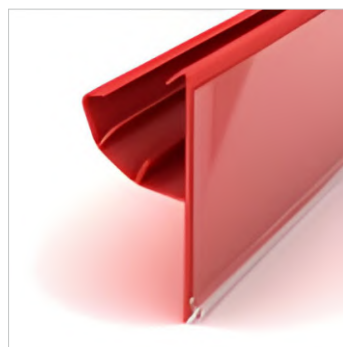
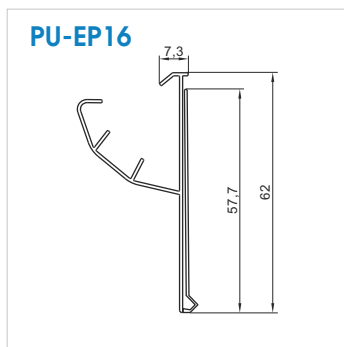
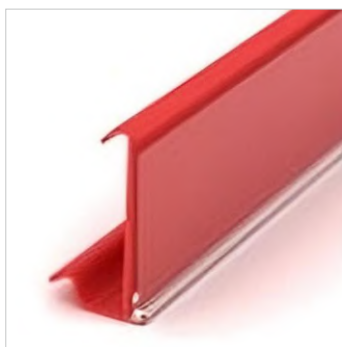
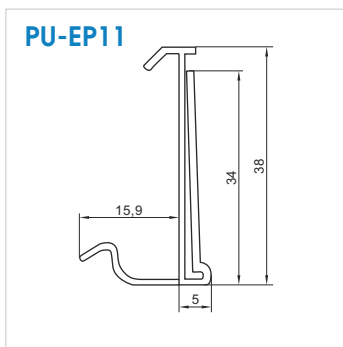
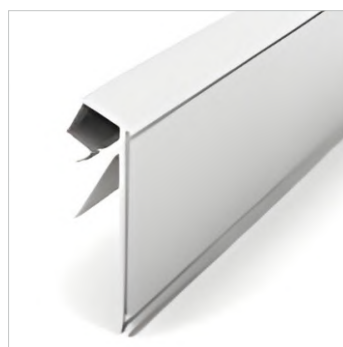
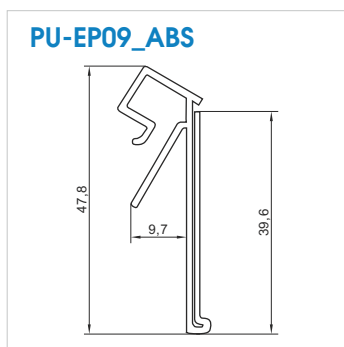
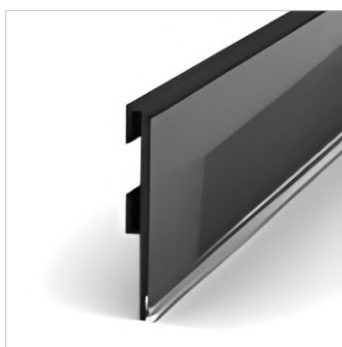
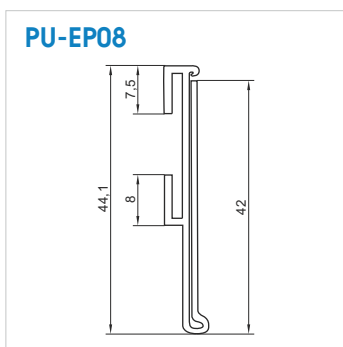
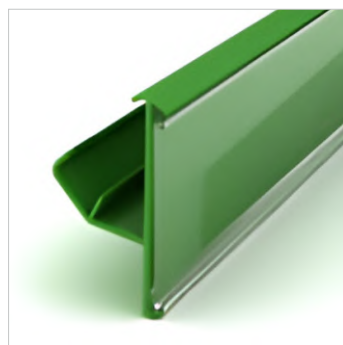
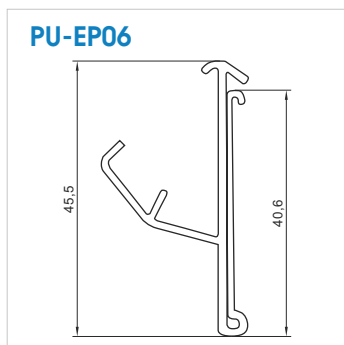
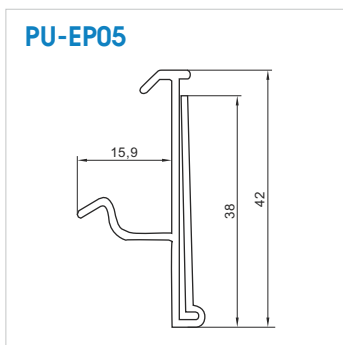
PROFILE LISTEW CENOWYCH SERII PU-EP / PRICE LABEL HOLDER PROFILES

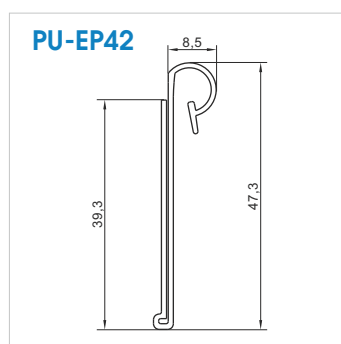
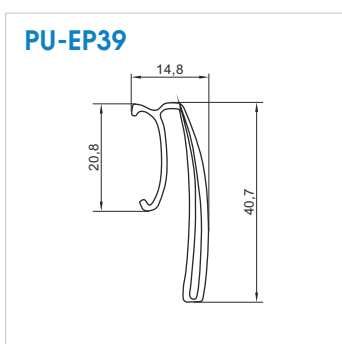
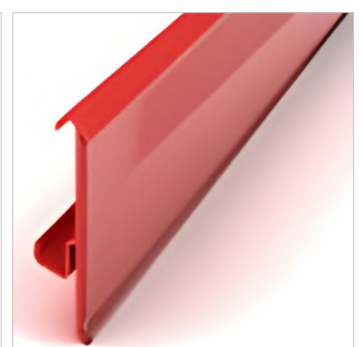
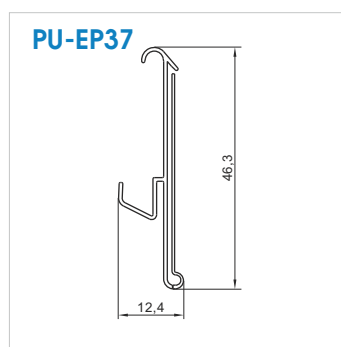
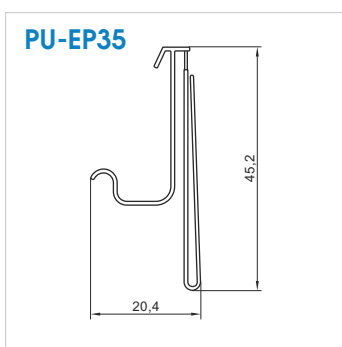
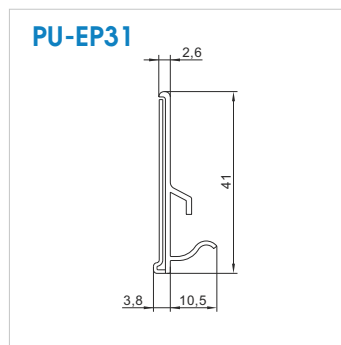
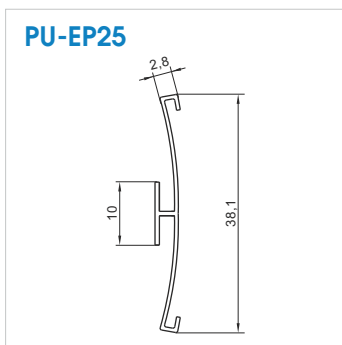
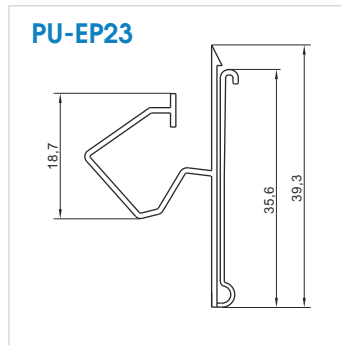
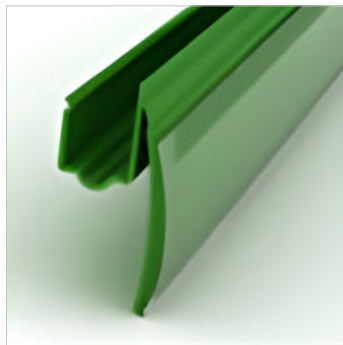
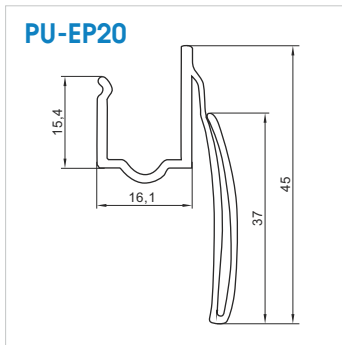
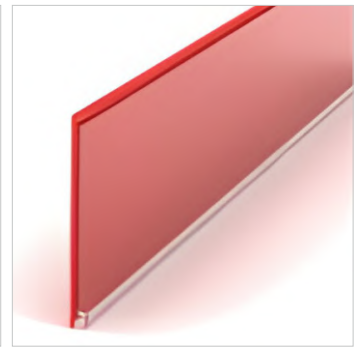
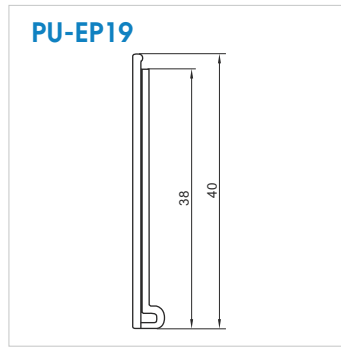
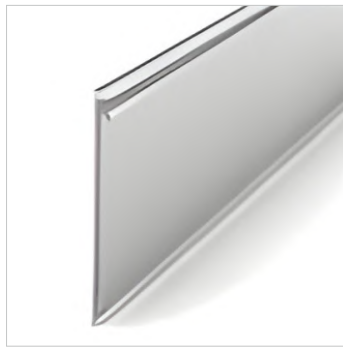
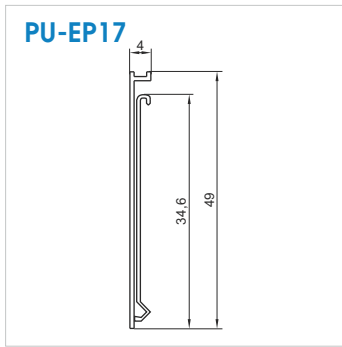
PU-EP

- wykonane z tworzywa sztucznego
- długość oraz kolor listew do precyzowania przy zamówieniu
- made of plastic
- length and color to specify while ordering

ZALETY STOSOWANIA / BENEFITS OF USING:

- **Personalizacja:** Wiele kolorów i kształtów listew cenowych pozwala na dostosowanie ich do konkretnego regału oraz Marki sklepu
- **Łatwość czyszczenia:** Listwy cenowe można łatwo czyścić, co pomaga utrzymać sklep w czystości i porządku
- **Łatwa aktualizacja:** Łatwość aktualizacji ceny produktów, co jest przydatne podczas zmian cen lub promocji
- **Personalization:** The variety of colors and shapes of price tags allows for customization to specific store shelves and brand identity.
- **Ease of Cleaning:** Price tags are easy to clean, aiding in maintaining store cleanliness and tidiness.
- **Easy Updates:** Updating product prices is simple, which is useful during price changes or promotions.

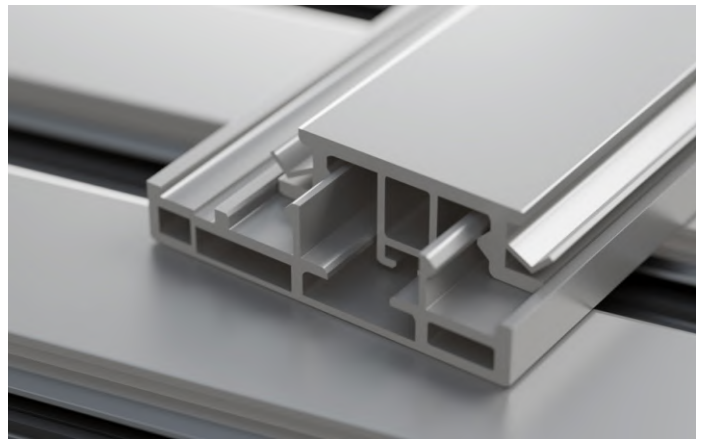




| | | | |
|-----------------------|--|-----------------------|--|
| <p>PU-EP47</p> | | <p>PU-EP52</p> | |
| <p>PU-EP55</p> | | <p>PU-EP63</p> | |
| <p>PU-EP67</p> | | <p>PU-EP68</p> | |
| <p>PU-EP70</p> | | <p>PU-EP71</p> | |
| <p>PU-EP72</p> | | <p>PU-EP80</p> | |



USZCZELKI MAGNETYCZNE CHŁODNICZE
MAGNETIC GASKETS FOR COOLING UNITS



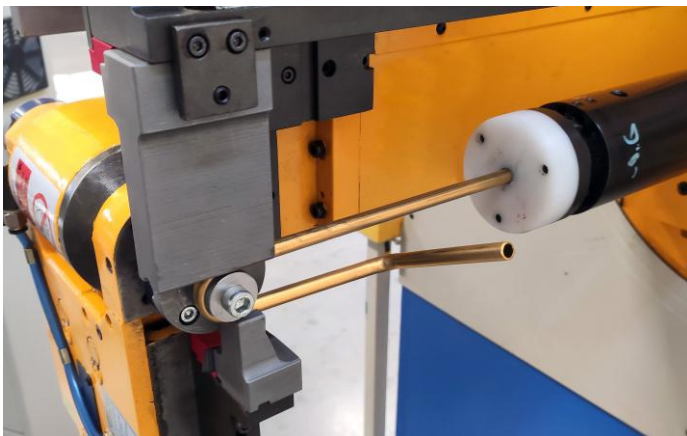
EKSTRUZJA PROFILI PCV
PVC PROFILES EXTRUSION



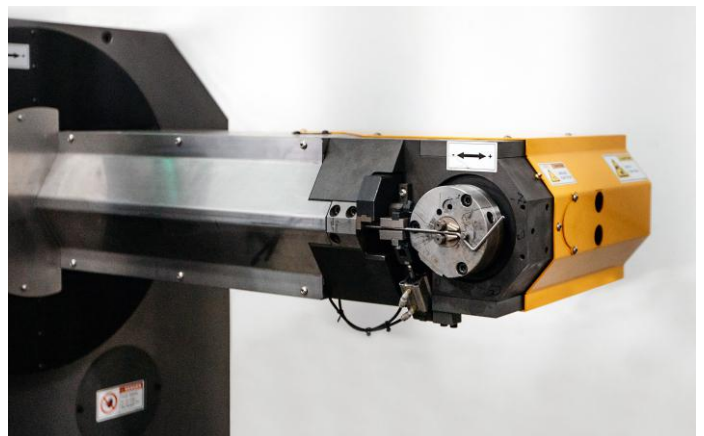
MONOBLOKI
MONOBLOCKS



SKRAPLACZE I AGREGATY CHŁODNICZE
CONDENSERS AND CONDENSING UNITS



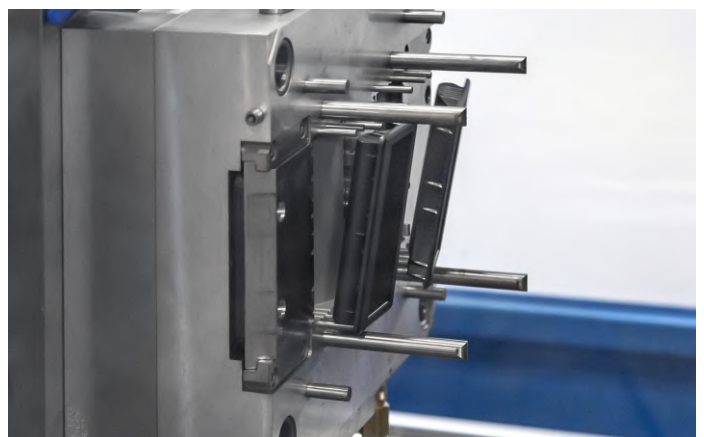
OBRÓBKA I GIĘCIE RUR MIEDZIANYCH
COPPER TUBE BENDING



PÓŁKI I ELEMENTY Z DRUTU
SHELVES AND WIRE ELEMENTS



DRZWI PRZESZKLONE DO MEBLI CHŁODNICZYCH
GLASS DOORS FOR COOLING FURNITURE



WTRYSKIWIANIE TWORZYW SZTUCZNYCH
PLASTIC INJECTION MOULDING

